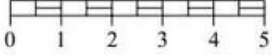


Ridge height to match approval 19/00051



North West Elevation 1:100



Scale (m)

dm^g
DAVID MARTIN
GROUP

Plot 2 Newland Street
Witham, CM8 2BD

£260,000

EPC Rating 'TBC'

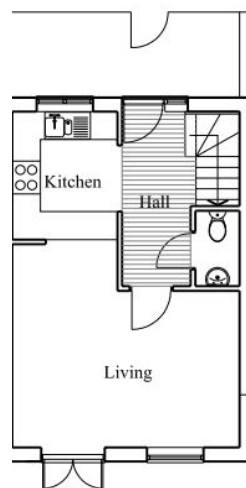
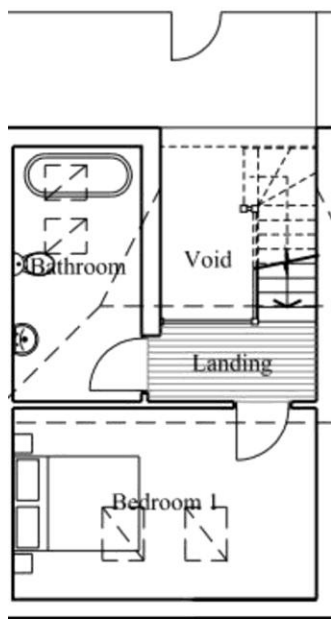
- BRAND NEW
- ONE BEDROOM HOUSE
- Allocated Parking
- Central Location



David Martin Estate Agents are delighted to offer for sale this BRAND NEW exciting development of Nine new homes with a superb collection of one and two bedroom homes including allocated parking. Conveniently located just off Newland street in the centre of Witham within walking distance to local shops and amenities.

PLOT 2 is a one bedroom terrace house consisting of a lounge, kitchen, doakroom, double bedroom and bathroom. The property comes with allocated parking and garden.

The details above do not form any offer or contract, we make enquiries with the seller to try to ensure the information provided is as accurate as possible. Any Buyer should satisfy themselves by inspection as to the accuracy of the details provided by David martin Estate Agents. All measurements, descriptions and floor plans are approximate.



David Martin
35a Church Road
Tiptree
Colchester
Essex

www.davidmartin.co.uk
tiptree@dmgtiptree.co.uk
01621 815815

Agents Note: Whilst every care has been taken to prepare these sales particulars, they are for guidance purposes only. All measurements are approximate and for general guidance purposes only and whilst every care has been taken to ensure their accuracy, they should not be relied upon and potential buyers are advised to recheck the measurements