





Set amid breath-taking Scottish countryside, with beaches just minutes away, Turnberry Holiday Park offers holidaymakers the chance to get away from it all and back to nature.

With grand proportions throughout, subtle taupe grey and wood finishes, The Ambleside is the perfect place to entertain, relax and unwind. And if you want a kitchen that's the heart of the home, look no further.

Discover a world of peace and tranquillity on Scotland's Ayrshire coast. This brand new ABI Ambleside features a reception hallway, spacious living room, dining area, and open-plan kitchen area with integrated appliances and stylish, modern furnishings. There is a master bedroom with en-suite shower room, twin room, shower room and plenty of storage space in this beautifully unique holiday home.

#### LOUNGE/DINING/KITCHEN

Neutral décor throughout with flooring laid to carpet in the lounge area. Patio doors to the front and large windows make this a light and airy space. The log burner style electric fireplace makes an ideal focal point. In the kitchen there is an integrated 5 burner gas hob, oven, grill and overhead extractor fan, fridge freezer, dishwasher and microwave.

#### MASTER BEDROOM

A luxurious and spacious double bedroom with king sized bed, a variety of fitted wardrobes and cabinetry providing excellent storage space. There is also a window seat and wall hung lamps. The room is decorated in a warm and light colour scheme with flooring laid to carpet.

#### BEDROOM TWO

A delightful twin room with fabric headboards and fitted wardrobes.



### SHOWER ROOM

The elegant shower room comprises of a fully enclosed shower, low flush WC and wash hand basin. The room is complete with towel radiator, shaver socket and coat hooks.

### ENSUITE SHOWER ROOM

The en-suite shower room comprises of fully enclosed shower, low flush WC and wash hand basin.

### LOCATION

Discover a world of peace and tranquillity on Scotland's Ayrshire coast.

Set amid breath-taking Scottish countryside, with beaches just minutes away, Turnberry Holiday Park offers holidaymakers the chance to get away from it all and back to nature.

Less than a half an hour's drive from Ayr and an hour from Glasgow, this stunning coastal setting offers amazing views across the sea to Ailsa Craig, and is the perfect starting point for anyone wishing to explore the Ayrshire coast.

On-site, Turnberry's many facilities, including a restaurant, bar, adventure playground, shop and heated indoor pool, offer so many opportunities to make great holiday memories.

For keen golfers, the famous Turnberry course is close by, and dozens of other top courses are just a stone's throw away.

With both static caravan holidays and holiday homes for sale, this peaceful park is at once an inviting getaway and a stepping stone to numerous local attractions and attracts consistently positive TripAdvisor reviews.

So, why not wave goodbye to the hustle and bustle of everyday life, and say hello to an



unforgettable holiday at Turnberry Holiday Park?

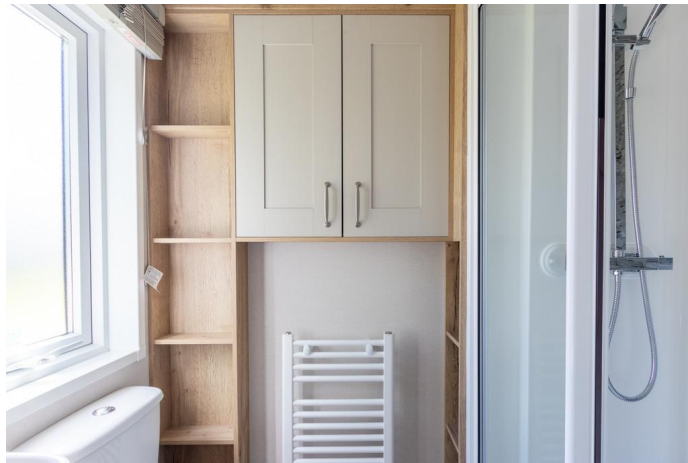
### VIEWINGS

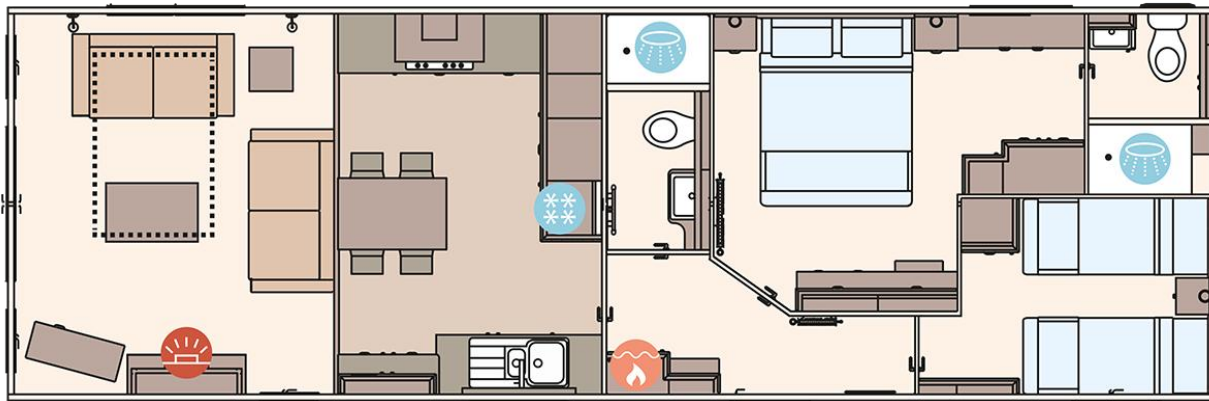
Viewing is by appointment only. Early internal viewing is recommended to appreciate all this superb caravan has to offer.

MQ Estate Agents are open 7 days a week:  
Monday to Friday 8am to 9pm & Saturday & Sunday 8.30am - 9pm to arrange your viewing or valuation appointment.









Call free on 0800 074 8585

[www.mqestateagents.co.uk](http://www.mqestateagents.co.uk)

We are registered with the Office of Fair Trading and the Property Ombudsman. You can be confident that the service is not only regulated but also fully transparent.

Whilst every precaution to ensure accuracy has been taken during the preparation of these particulars, if there is any aspect which is critical to your interest or which you find misleading, please contact us for further information. In accordance with the terms of the Property Misdescriptions Act, we wish to clarify all kitchen appliances or indeed and other mechanical items, apparatus or appliances relating to this property, including the central heating system, has not been inspected or tested and therefore MQ Estate Agents Limited do not warrant either now or at a later date their correct functions. Please note photographs taken with a wide angled lens and all measurements are approximate and are taken with a laser tape measure, therefore MQ Estate Agents Limited cannot guarantee true room sizes and will not be held responsible.