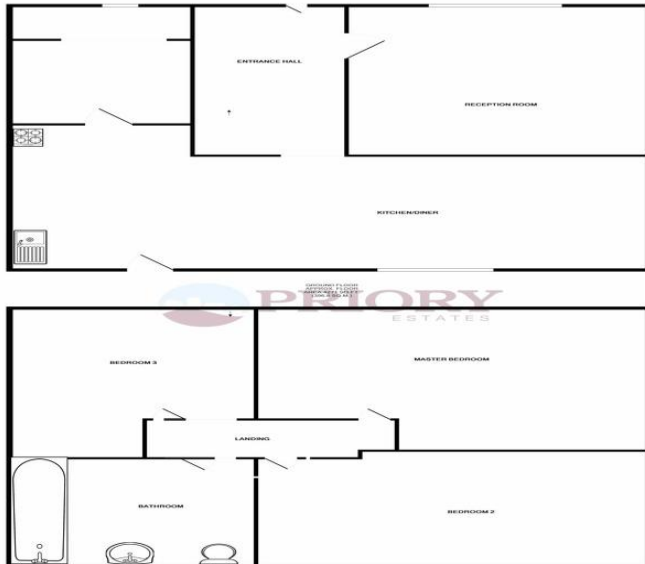
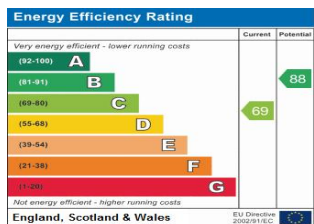


Frinton Office
 88 Connaught Avenue
 Frinton-on-Sea
 Essex CO13 9PT
 Tel: (01255) 677688

Harwich Office
 147 High Street
 Harwich
 Essex CO12 3AX
 Tel: (01255) 506655



SELLER'S DECLARATION
 I/WE THE SELLER(S) HEREBY DECLARE THAT THE ABOVE INFORMATION IS TRUE AND CORRECT TO THE BEST OF MY/OUR KNOWLEDGE AND BELIEF AND THAT I/WE HAVE NOT BEEN IN CONTACT WITH ANY OTHER AGENT(S) IN CONNECTION WITH THE SALE OF THIS PROPERTY.



Council Tax Band
 Council Tax Band A

LOCAL AUTHORITY
 Tendring District Council

OFFICE
 147 High Street
 Harwich
 Essex
 CO12 3AX

T: 01255 506655
E: admin@priorityestates.co.uk
W: www.priorityestates.co.uk

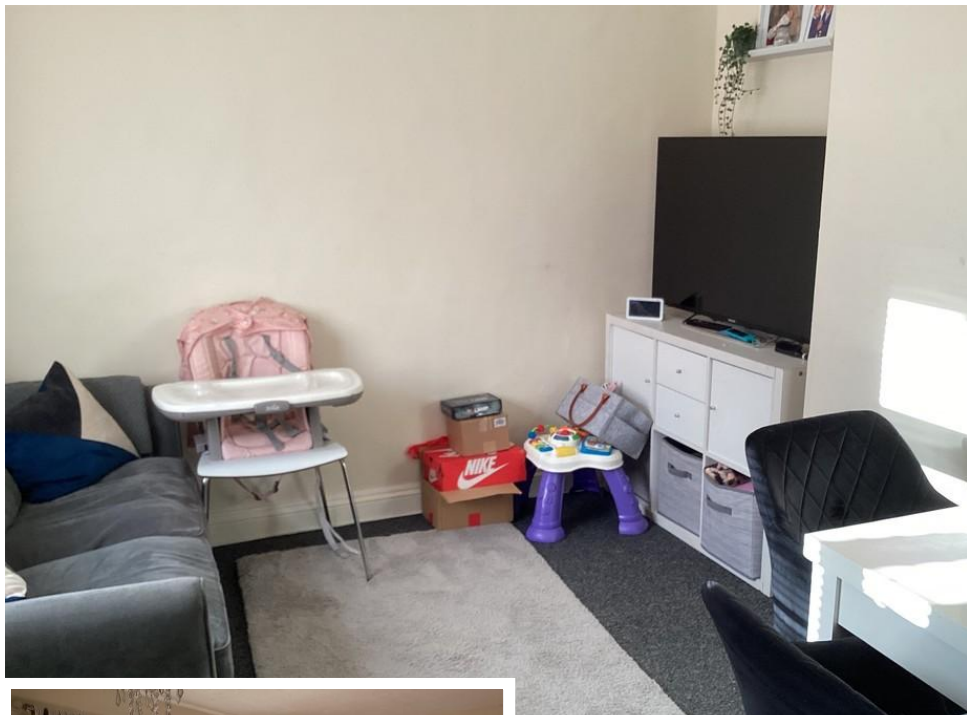
Agents Note: Whilst every care has been taken to prepare these particulars, they are for guidance purposes only. All measurements are approximate, are for general guidance purposes only and whilst every care has been taken to ensure their accuracy they should not be relied upon and potential tenants are advised to recheck the measurements.



Willow Way
 Dovercourt, Harwich

Rent: £1,050 pcm
 Energy Efficiency Rating D





Property Description

Priory Estates are pleased to offer this three-bedroom mid-terrace house situated in the quiet location of Upper Dovercourt. This property has two reception rooms, good sized bedrooms, open plan kitchen/dining room and a large garden. The property is available from the beginning of March and will be let on an unfurnished basis.



Accommodation

Living Room (3.2m x 3.12m)
 Kitchen/Dining Room (6.5m x 3.12m)
 Utility Room (1.83m x 1.42m)
 Master Bedroom (4.04m x 3.23m)
 Second Bedroom (3.99m x 2.72m)
 Third Bedroom (3.33m x 2.44m)
 Bathroom (2.44m x 1.68m)

Features

Spacious Accommodation
 Three bedrooms
 Open Plan Kitchen/Diner
 Large Rear Garden
 Gas Central Heating
 Double Glazed



Financial Requirements

A minimum of one month's rent, plus a deposit of £1210.00 is required in deared funds prior to the commencement of the tenancy.

Term

A minimum of 6 months under an Assured Shorthold Tenancy Agreement, with an extension to the contract should both parties agree.

Restrictions

Certain Restrictions have been placed on this property, please ask for details.