



Regus Stokenchurch

Beacon House, Stokenchurch Business Park, Ibstone Road, STOKENCHURCH, HP14
3FE

MODERN SERVICED OFFICES

100 to 500 sq ft
(9.29 to 46.45 sq m)

- Private, Shared and Virtual Offices available
- Meeting rooms available
- High speed internet
- Staffed reception and lounge area
- 24 Hour access
- On-site management
- On site car parking

Regus Stokenchurch, Beacon House, Stokenchurch Business Park, Ibstone Road, STOKENCHURCH, HP14 3FE

Summary

Available Size	100 to 500 sq ft
Business Rates	Upon Enquiry
VAT	Applicable
Legal Fees	Each party to bear their own costs
EPC Rating	Upon enquiry

Description

A two-storey, modern business centre built to high specifications with light-filled office space and an impressive reception area to greet guests.

The serviced offices are supplied with furniture, high-speed internet and a staffed reception, with additional services such as meeting rooms and virtual offices available.

You can choose between interior and window offices and we also offer several suites - small office with meeting rooms attached. Each private office can be upgraded to add more desks or relocated at no extra cost.

Temporary offices are also available where you can set up for the duration of a project, with rolling one month contracts.

Location

Stokenchurch is located at junction 5 of the M40 motorway. A variety of local shops, takeaways, hotel and public houses are available. High Wycombe is 6 miles away on the M40 or A40. Mainline railway services are available from High Wycombe to London Marylebone

Accommodation

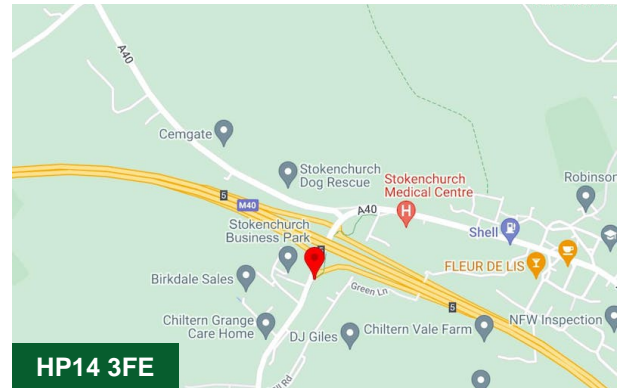
Private fully-furnished office for individuals or teams - customised to match your brand and create your own office suite with private amenities - for teams of all sizes.

Coworking - be part of a vibrant coworking community with dedicated desk or hot-desking options - thousands of locations - book your hot desk via the Regus app - network and collaborate.

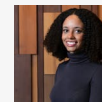
Virtual offices - build an instant presence wherever you need to be, at prime business locations with use of global business lounges and phone answering available.

Meeting Rooms - Professional rooms for your next training session, interview or pitch, wherever you need it - a wide range of different sized meeting rooms - presentation equipment available.

Membership - Work wherever you need to with flexible access to our global network of workspaces - Join via the Regus app - membership for all budgets - work anywhere in the world.

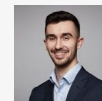


Viewing & Further Information



Neave DaSilva

01494 446612 | 07827 908926
nds@chandlergarvey.com



James Garvey

01494 446612
jg@chandlergarvey.com