



Minors & Brady

1 Pennycress Drive, Wymondham

Guide Price £300,000

1 Pennycress Drive

Wymondham, Wymondham

Guide Price: £300,000 - £325,000. Immaculate family home located in a desired area within Wymondham, boasting all amenities within. This extremely generous plot offers a wealth of spacious reception areas, modern fitted kitchen with integrated appliances, three bedrooms with ample fitted storage, family bathroom, ensuite and ground floor cloakroom, tandem car port for off road parking and a beautifully designed private rear garden with a patio area for alfresco dining.

Tenure: Freehold

EPC Energy Efficiency Rating: C

EPC Environmental Impact Rating: C



Minors & Brad



Minors &



Minors &



Minors &



Minors & Brady

1 Pennycress Drive

Wymondham, Wymondham

Immaculate family home located in a desired area within Wymondham, boasting all amenities within. This extremely generous plot offers a wealth of spacious reception areas, modern fitted kitchen with integrated appliances, three bedrooms with ample fitted storage, family bathroom, ensuite and ground floor cloakroom, tandem car port for off road parking and a beautifully designed private rear garden with a patio area for alfresco dining.

THE LOCATION

Situated in the highly sought-after area of Wymondham. This property boasts an ideal location, for those who rely on public transportation, Wymondham Railway Station is conveniently nearby, making it an excellent choice for daily commuters. You'll find a range of amenities within a short distance, including Morrisons, Waitrose and Lidl, ensuring that your grocery and shopping needs are easily met. Additionally, this location is well-placed for school catchment areas, making it an attractive choice for those with children. Boasting more extensive shopping, dining and entertainment options, a short drive will take you into Norwich city centre, where you can explore a wide array of amenities and shops.

THE PROPERTY

As you step through the front door, you are welcomed into a bright and inviting lounge area, offering a peaceful space for relaxing and entertaining guests. The large windows allow

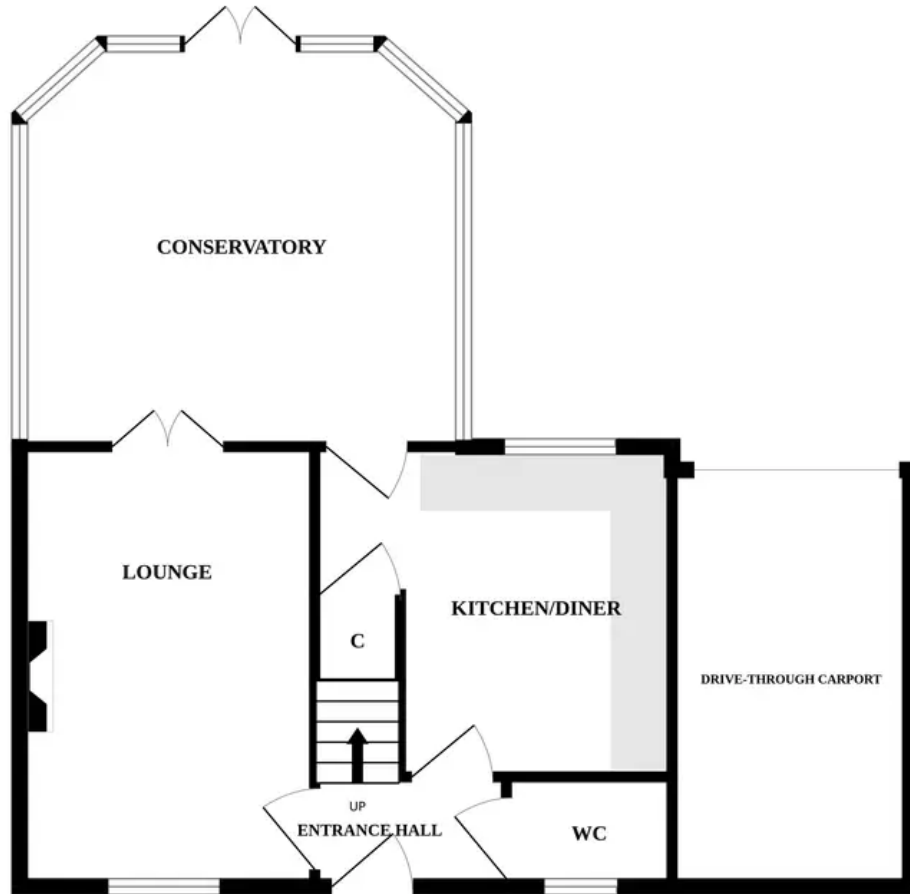


Minors & B

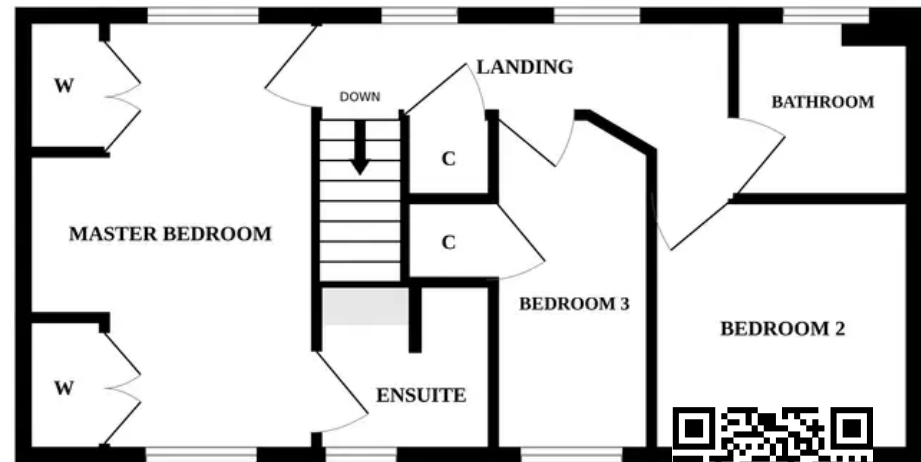


Minors & B

GROUND FLOOR



1ST FLOOR



Whilst every attempt has been made to ensure the accuracy of the floorplan contained here, measurements of doors, windows, rooms and any other items are approximate and no responsibility is taken for any error, omission or mis-statement. This plan is for illustrative purposes only and should be used as such by any prospective purchaser. The services, systems and appliances shown have not been tested and no guarantee as to their operability or efficiency can be given.
Made with Metropix ©2023