



THE
CROFT

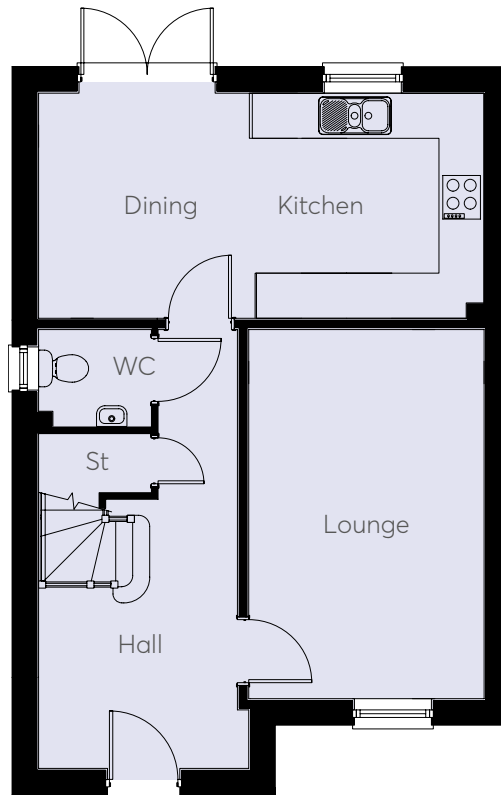
A three / four bedroom home
with potential for home working



BLUEBELL
HOMES

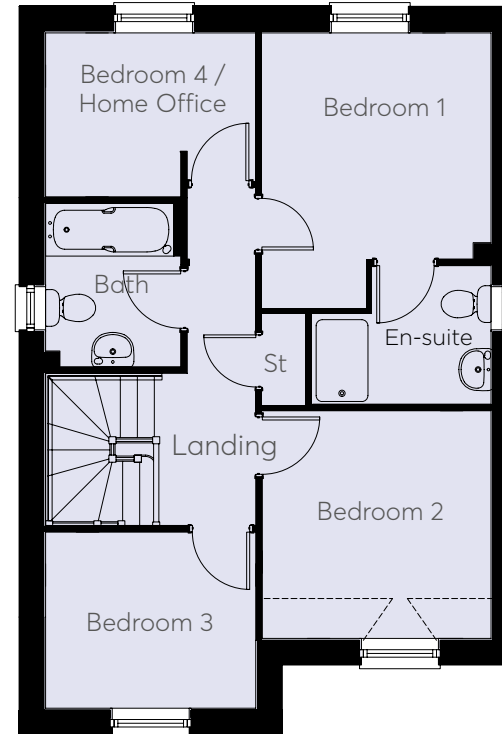
THE CROFT

A three / four bedroom home with potential for home working



Ground Floor

Kitchen	3.07m x 2.99m	10'1" x 9'10"
Dining	2.99m x 2.80m	9'10" x 9'2"
Lounge	4.91m x 3.13m	16'1" x 10'3"



First Floor

Bedroom 1	3.04m x 3.01m	10'0" x 9'10"
Bedroom 2	3.07m x 3.03m	10'1" x 9'11"
Bedroom 3	2.79m x 2.33m	9'2" x 7'8"
Bedroom 4 / Home Office	2.78m x 2.18m	9'1" x 7'2"

**CONSUMER
CODE FOR
HOME BUILDERS**

www.consumercode.co.uk

These images are designed to give an impression of the development and our housetypes - they may not reflect a specific plot and do not form part of any contract. Final finishes, landscaping and detail will vary. This information has been provided in good faith, however all layouts and measurements are approximate only. Some house types include areas of reduced headroom. Bathroom and kitchen layouts are indicative only and designs may change due to our process of continuous product development. Images used in marketing materials may be computer generated or photography of previous developments. Dimensions are taken to the maximum.



**BLUEBELL
HOMES**