



Yale

SIX



Andrew Pearce

PINNER

RUSSELL CLOSE, RUISLIP , HA4 9EF

£650,000



This three-bedroom semi-detached house is a modern and spacious family home in a desirable location.

This is a beautifully maintained property that features a welcoming entrance hall, the living room offers a cozy space for relaxation and entertainment, perfect for spending quality time with family and friends. The adjacent dining area provides an ideal setting for enjoying meals together and hosting gatherings as well as having direct access to the rear garden. On the first floor, there are three generous bedrooms and a superb family bathroom.

The property also benefits from off street parking and a shared driveway that provides side access into the garden. The rear garden is private and features a paved patio area with lawn area.

Russell Close is conveniently located close to Eastcote and South Ruislip high streets and train stations, with access to Metropolitan, Piccadilly, Central and Chiltern lines. As well as being close proximity to a number of local schools including Newnham, Field End and Queensmead.



SEMI DETACHED HOUSE

THREE BEDROOMS

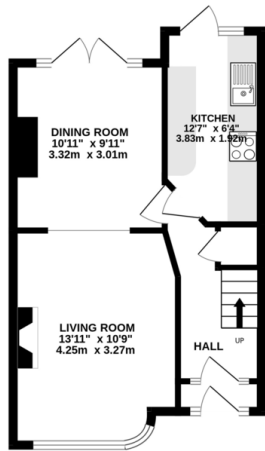
LARGE THROUGH LOUNGE

RECENTLY REFURBISHED BATHROOM

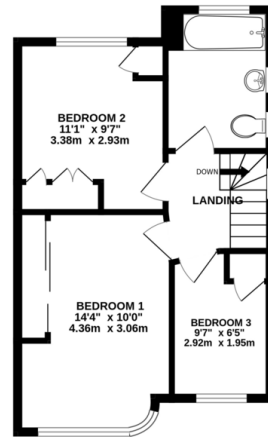
WOODEN FLOORING DOWNSTAIRS

POTENTIAL TO EXTEND (STPP)

GROUND FLOOR
388 sq. ft. (36.0 sq.m.) approx.



1ST FLOOR
411 sq. ft. (38.2 sq.m.) approx.



TOTAL FLOOR AREA: 799 sq. ft. (74.2 sq.m.) approx.
Whilst every attempt has been made to ensure the accuracy of the floorplan contained here, measurements of doors, windows, rooms and any other items are approximate and no responsibility is taken for any error, omission or mis-statement. This plan is for illustrative purposes only and should be used as such by any prospective purchaser. The services, systems and appliances shown have not been tested and no guarantee as to their operability or efficiency can be given.
Made with Metropac C1024.



