



17 Osborne Drive | Todwick | Sheffield | S26 1HW

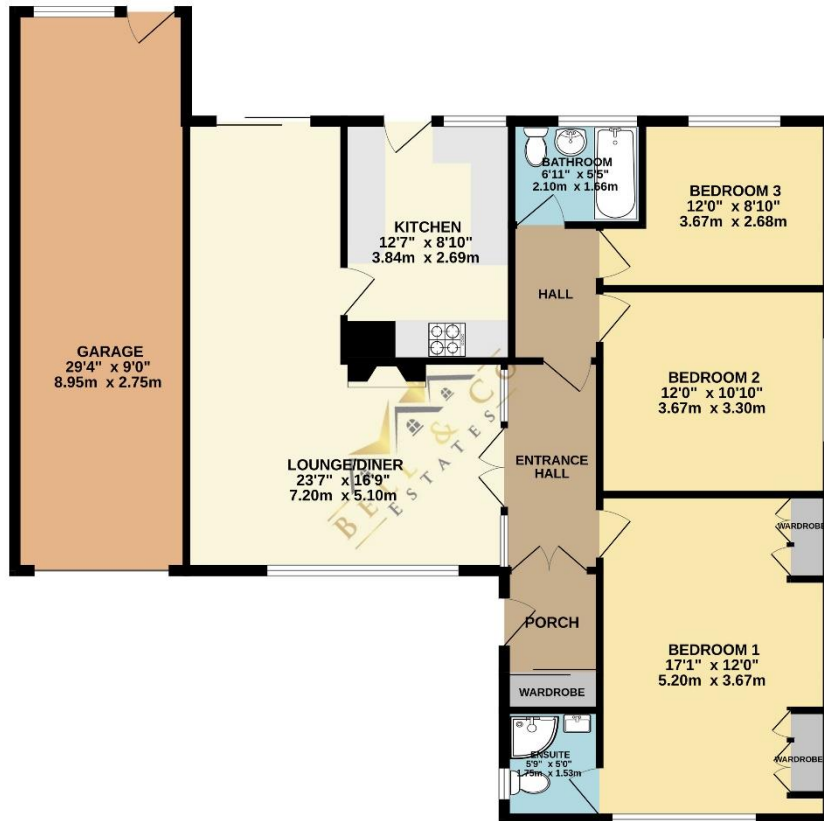
£375,000

Bell & Co Estates are delighted to showcase this well presented, Three Bedroom Detached Bungalow on this quiet street in the sought-after village location of Todwick selling with no vendor chain. In brief the property comprises of Entrance Porch with mirrored fitted storage, through into the Entrance Hallway with stunning wooden glassed doors flowing into the formal Lounge Diner with feature fireplace and patio doors onto the Garden, into a modern fitted Kitchen with access door to the rear. The Entrance Hall provides access to three good size Bedrooms, family Bathroom with WC, Sink and Bath with Shower over, the Master complete with fitted wardrobes and En-Suite Shower Room. To the front is a paved driveway providing off road parking leading to the Garage with grassed area. To the rear is a lovely, maintained garden which is mainly laid to lawn with paved patio area, greenhouse, summerhouse, and stunning views over the field. If you are looking for a Bungalow to move straight into then this is the one for you!

- No Chain
- Immaculate Throughout
- Lounge Diner
- Master with Ensuite
- Modern Kitchen with appliances
- Beautiful Garden
- Stunning Views
- Off Road Parking
- Garage



GROUND FLOOR
1276 sq.ft. (118.6 sq.m.) approx.



Contact Details

79 Wales Road
Kiveton Park
Sheffield
South Yorkshire
S26 6RA

www.bellcoestates.com

03333 580590

17 Osborne Drive
Todwick
SHEFFIELD
S26 1HW

Energy rating

D

Valid until
13 February 2034

Certificate number
6734-7822-8300-0707-4292

Property type Detached bungalow

Total floor area 94 square metres

Agents Note: Whilst every care has been taken to prepare these sales particulars, they are for guidance purposes only. All measurements are approximate and for general guidance purposes only and whilst every care has been taken to ensure their accuracy, they should not be relied upon and potential buyers are advised to recheck the measurements