



16 The Rise, Crowthorn Road

Bolton



NICHOLLS  
& BARNES

ESTATE AGENTS

£725,000

# 16 The Rise

Crowthorn Road, Bolton

An opportunity to purchase an exceptional stone detached residence located in the beautiful rural setting of Edgworth ideally situated for country living but also with easy access to motorway links and access to Manchester, Bolton, Blackburn and Bury.  
Council Tax band: G

Tenure: Freehold

EPC Energy Efficiency Rating: B

EPC Environmental Impact Rating: B

- Exceptional Stone Detached Residence
- In a Beautiful Rural Setting
- Arranged Over 4 Floors
- 5 Bedrooms
- Large Basement



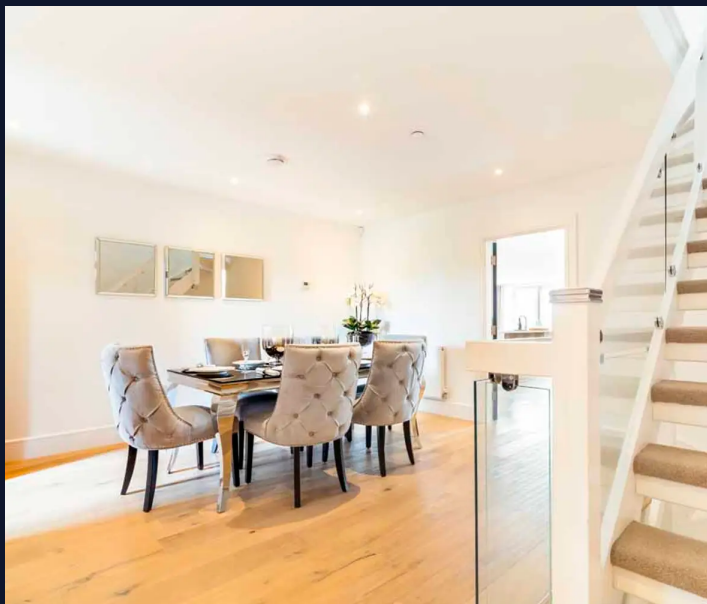
**GARDEN**

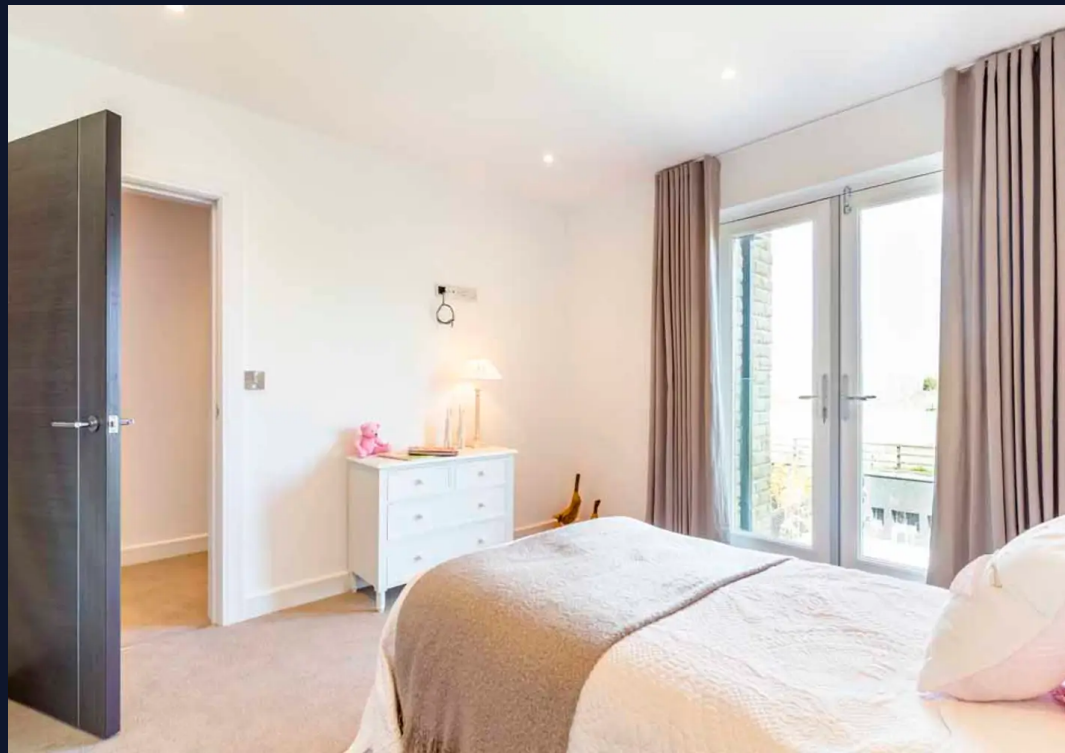
Gardens front and rear

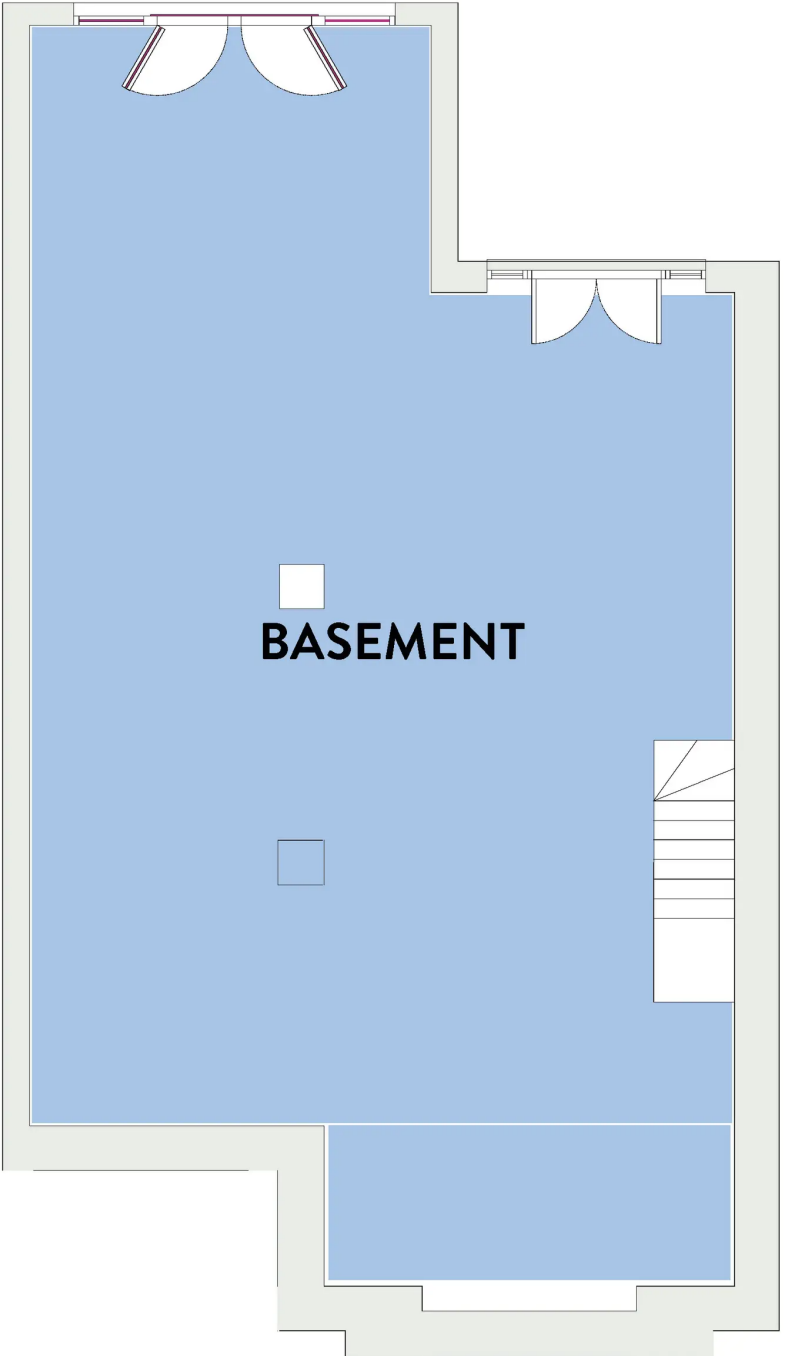
**GARAGE**

Single Garage

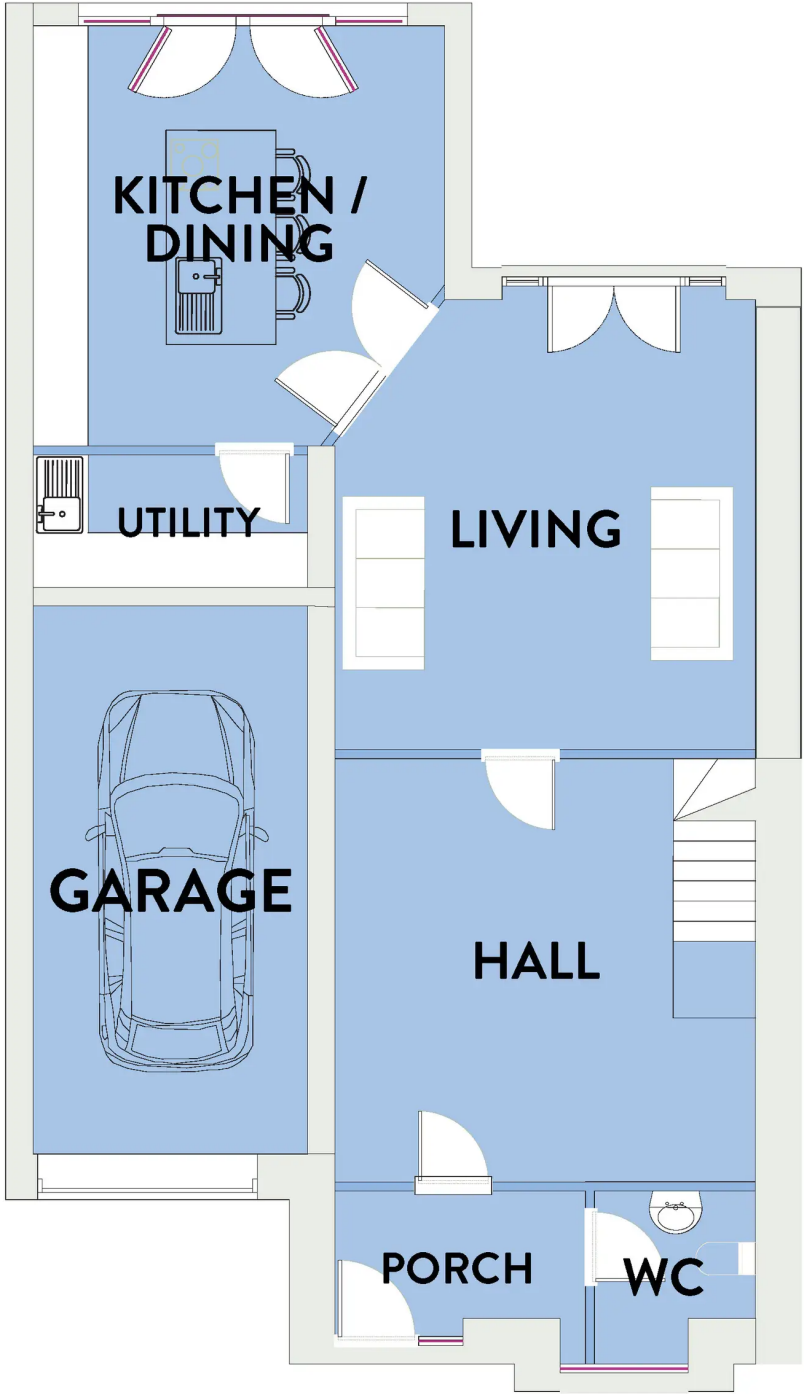
Garage and parking space

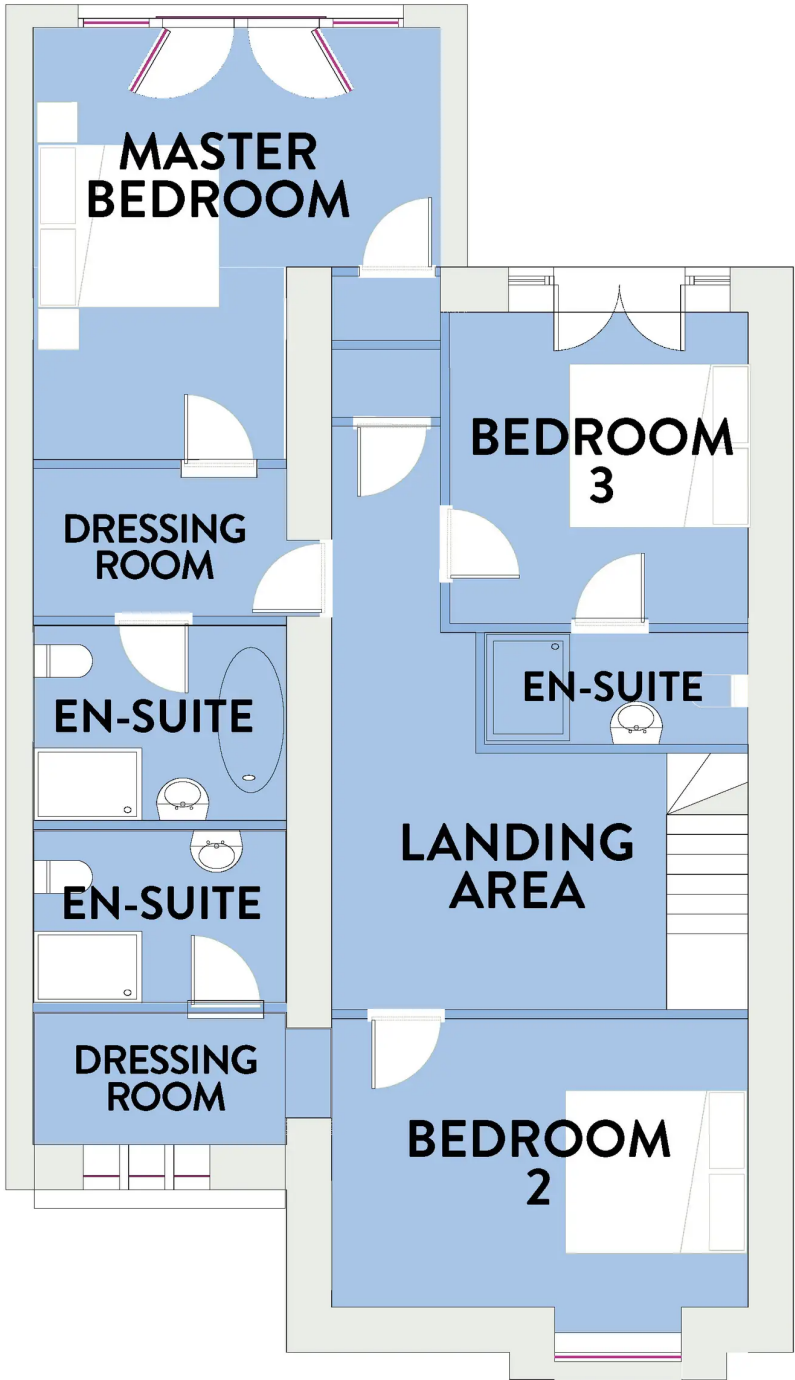






**BASEMENT**











## Nicholls and Barnes

Nicholls & Barnes Estate Agents, 43-45 Hoghton Street, Southport PR9 0PG

01704 541 414 • [sales@nichollsandbarnes.net](mailto:sales@nichollsandbarnes.net) • [nichollsandbarnes.net](http://nichollsandbarnes.net)



**NICHOLLS  
& BARNES**

ESTATE AGENTS

