

La Chasse, Princes Tower Road, St. Saviour
£7,500,000

BROADLANDS

FINDING YOU A HOME SINCE 1972

La Chasse, Princes Tower Road

St. Saviour, Jersey

Situated a short drive from St Helier, yet close to popular schools, and the east of the island it is close to everything that you need, yet private enough for peace and quiet.

- Stunning, traditional granite home
- Rebuilt throughout to the highest standards
- 5 Bedrooms, 4 bathrooms
- 4 Reception rooms including an eat-in kitchen and outstanding orangery
- Pool house, gym and garaging
- Private south facing garden with pool and surrounding fields
- Gated entrance
- Please email Harry Trower at harry@broadlandsjersey.com



La Chasse, Princes Tower Road

St. Saviour, Jersey

This five-bedroom granite property has been lovingly refurbished by the DiCasa team to deliver a space of functionality and luxury. Featuring a separate annex that accommodates a guest bedroom and gym that leads out onto an outdoor pool and terrace, with views across it's 7 acres of countryside.

This former farmhouse can be found a few hundred meters from one of Jersey's top preparatory schools – St Michaels, in the parish of St Saviour. It's a truly rare opportunity to purchase a refurbished farmhouse with such character in such a desirable location. The gated entrance opens to a stone driveway with turning circle and parking for four cars, with a garage to the rear of the house. The house extends to approximately 4689 sq. ft along with a stunning standalone annex containing a gym, shower room, toilet, and a kitchenette with a grand entertaining space. The house has been beautifully renovated throughout using the signature DiCasa colour palette and contemporary aesthetic.





Living

The DiCasa team have spared no expense on this renovation starting from the quaint hallway and cloakroom on the ground floor, through to the brand-new home office, magnificent orangery and drawing room. The gorgeous drawing room has an impressive original stone fireplace and the orangery doubles as an elegant formal dining room with French doors leading out to the rear terrace. The limestone floor across the orangery gives a distinguished feel, with a grand dining table and rustic armoire. The layout has made the most of the room's height and light, with the floor to ceiling windows and doors. The orangery is serviced by an adjoining kitchen/breakfast room, which is ideally suited for modern living with an attractive, well-appointed kitchen area with a Lacanche French range, with its signature shade of porcelain enamel, delicately crafted and presenting such a distinguishing feature to this kitchen.

Sleeping

On the first floor, there are five generous double bedrooms, including a master en-suite bathroom with a free-standing bath and separate shower. The other three bedrooms are serviced by en-suite bathrooms and the fifth bedroom is serviced by a luxury family bathroom. All of the bathrooms are brand new and boast designer décor and luxury sanitary ware using only the finest of materials. Each bedroom in this stunning turnkey properly complements each other, with silk carpets throughout the 1st floor to make for a luxurious finish to the nude colour palette. The bedrooms have wardrobes, armchairs, and accessories you would expect to find having been styled by first class interior experts. The master bedroom and other rear bedroom have Juliet balconies, allowing for that wonderful morning sun to stream into your bed.

Pool House

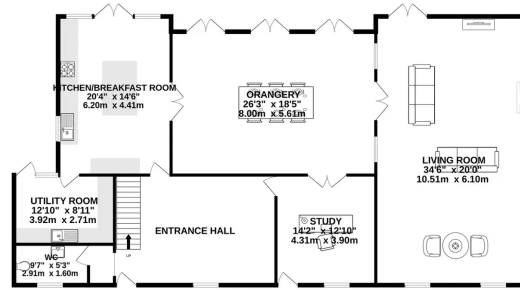
La Chasse boasts a wonderful, heated pool, with electric cover and terrace, with expansive views across the fields and gardens which extend to some 7 acres. To compliment this there is a large pool house complete with kitchenette, changing facilities and space to entertain.

Services

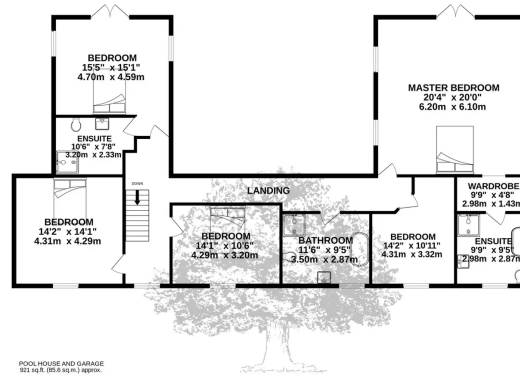
Oil fired central heating for the main house and pool. All ground floor rooms have wet underfloor heating. First floor



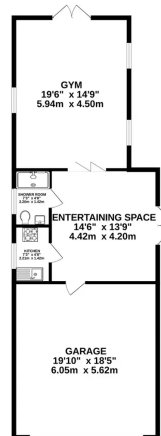
GROUND FLOOR
2116 sq.ft. (196.6 sq.m.) approx.



1ST FLOOR
1662 sq.ft. (153.4 sq.m.) approx.



POOL HOUSE AND GARAGE
921 sq.ft. (85.6 sq.m.) approx.



TOTAL FLOOR AREA : 4689 sq.ft. (435.6 sq.m.) approx.

Whilst every attempt has been made to ensure the accuracy of the floorplan contained here, measurements of doors, windows, rooms and any other items are approximate and no responsibility is taken for any error, omission or mis-statement. This plan is for illustrative purposes only and should be used as such by any prospective purchaser. The services, systems and appliances shown have not been tested and no guarantee as to their operability or efficiency can be given.
Made with Metropix ©2023



Broadlands

Broadlands Estates, Library Place - JE2 3NL

01534 880 770 • enquiries@broadlandsjersey.com • www.broadlandsjersey.com/

BROADLANDS

FINDING YOU A HOME SINCE 1972