

FINDING YOU A HOME
SINCE 1972
B



Flat 1, 9 Kensington Place, St. Helier, Jersey
£499,000

BROADLANDS

FINDING YOU A HOME SINCE 1972

Flat 1, 9 Kensington Place

St. Helier, Jersey

As you enter Kensington Place from Cheapside, the property is 30 yards on your right hand side , No 9.

- Private south facing sun trap
- Close to beach, parks, shops and a hub of restaurants
- Within easy access to town centre, schools, cycle route and walks
- Great first home or fantastic buy to let
- Bright airy and spacious
- Outskirts of town location
- 2 Double bedrooms
- Generous room sizes throughout
- Newly renovated purpose built apartment
- Please contact Doug on 07700702585 or doug@broadlandsjersey.com



Flat 1, 9 Kensington Place

St. Helier, Jersey

Recently renovated throughout to a high standard with a stunning new kitchen and bathroom. One of only four apartments in the development, tucked away on a quiet one way street on the outskirts of town, ideal for walking to work and close to an array of amenities. The property comprises of; two double bedrooms, spacious lounge/diner, separate kitchen, house bathroom and private balcony with built-in storage. This would make a great first home or fantastic buy to let.



**Services**

All main services. Service charges T.B.A.

Living

Spacious lounge/diner, separate kitchen and a built in store room.

Sleeping

Two double bedrooms and a house bathroom.

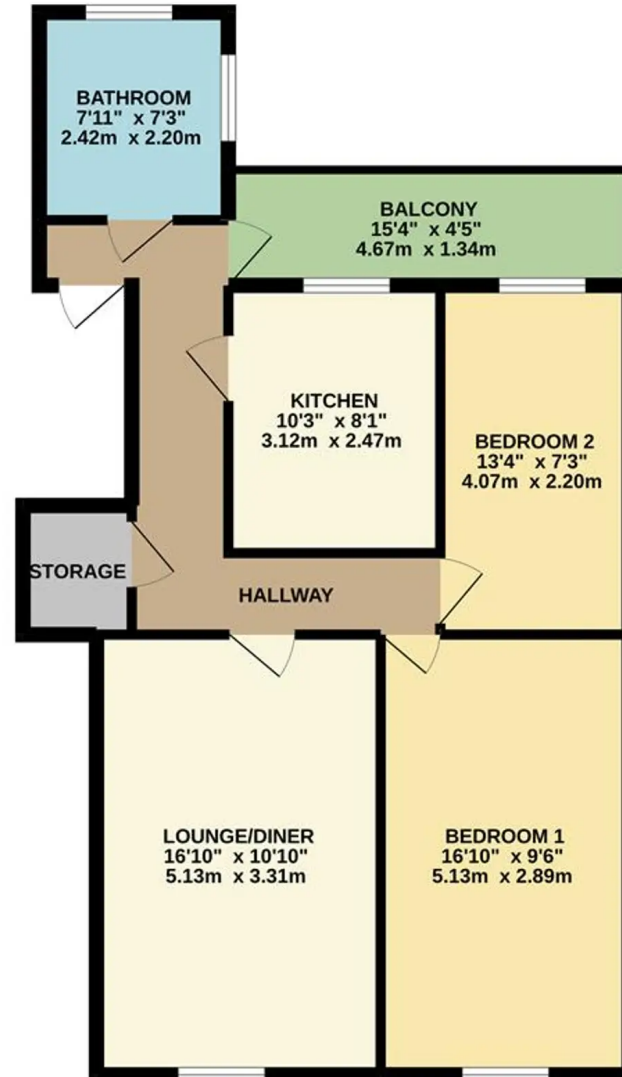
Balcony

Private balcony.





SECOND FLOOR
691 sq.ft. (64.2 sq.m.) approx.



TOTAL FLOOR AREA : 691 sq.ft. (64.2 sq.m.) approx.

Whilst every attempt has been made to ensure the accuracy of the floorplan contained here, measurements of doors, windows, rooms and any other items are approximate and no responsibility is taken for any error, omission or mis-statement. This plan is for illustrative purposes only and should be used as such by any prospective purchaser. The services, systems and appliances shown have not been tested and no guarantee as to their operability or efficiency can be given.
Made with Metropix ©2022



Broadlands

Broadlands Estates, Library Place - JE2 3NL

01534 880770 • enquiries@broadlandsjersey.com • www.broadlandsjersey.com/

BROADLANDS

FINDING YOU A HOME SINCE 1972