



2 Old Harbour House Flats, 2 Commercial Buildings, St. Helier, **BROADLANDS**

£430,000

FINDING YOU A HOME SINCE 1972

2 Old Harbour House Flats, 2 Commercial Buildings

St. Helier, Jersey

From Normans, follow the road round past Commercial Buildings, Old Harbour House is the 2nd from last building.

- Spacious two bedroom/ two bathroom apartment
- Fabulous open plan living space with high ceilings
- Brand new refurbished with quality fittings
- Views across the old harbour
- Bright and spacious
- Just across from the cycle track going towards Havre des Pas
- Walking distance of town
- Communal bike store
- Sole agent
- Please contact Joanna on 07797887751 / joanna@broadlandsjersey.com



2 Old Harbour House Flats, 2 Commercial Buildings

St. Helier, Jersey

Brand new fully refurbished two bedroom/ two bathroom apartment with stunning views across the old harbour. On the first floor and offering fabulous open plan kitchen/ lounge/ diner with fully kitted kitchen, spacious entrance hall with double storage cupboard) two double bedrooms (one with ensuite bathroom), plus a house bathroom. Whilst the property has no parking, there is rented parking and on road parking available nearby. Tucked away opposite the harbour, with the cycle track towards Havre des Pas just outside, stunning beaches and town just moment away, this is an ideal, low maintenance, first step onto the property ladder.





Living

Fabulous bright and spacious open plan living space with high ceilings and views across the old harbour, brand new fully fitted kitchen with integrated appliances.

Sleeping

Two double bedrooms, including main bedroom with ensuite bathroom plus additional house bathroom.

Outdoors

Communal bike store with charging point. No parking but rented parking and on street parking available nearby.

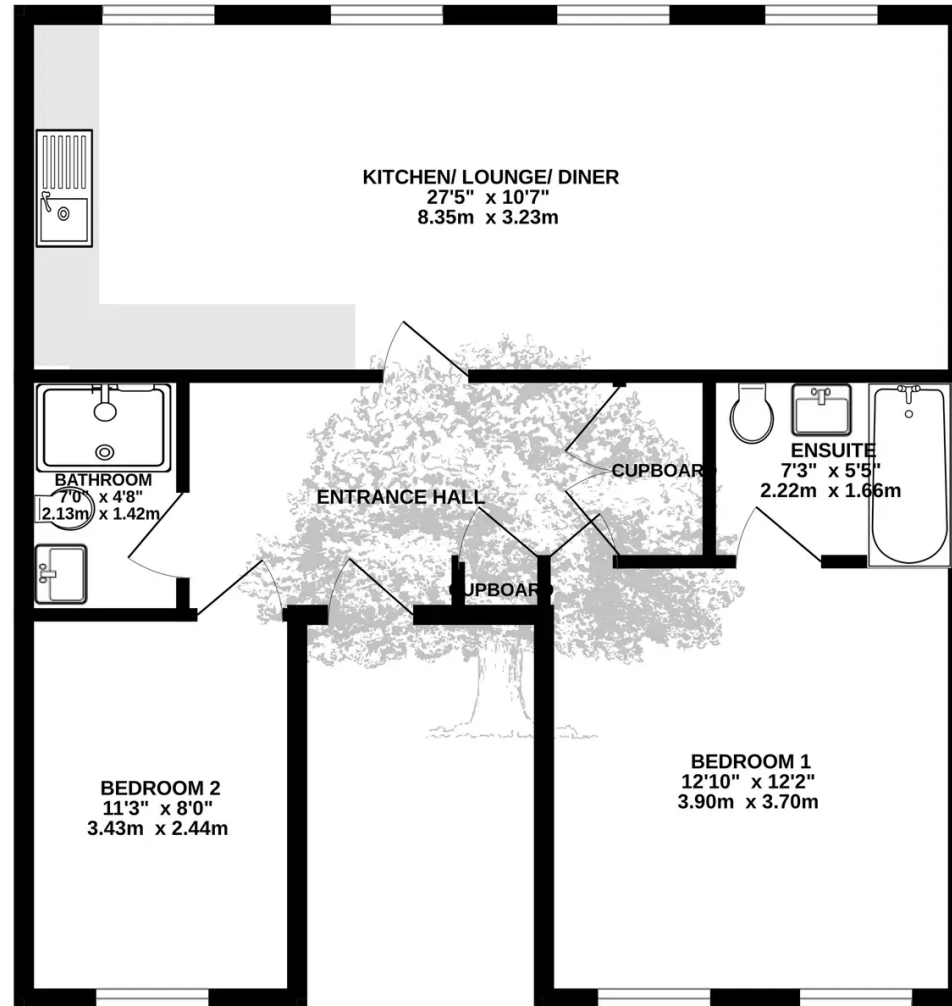
Services

All mains services, no gas. Electric heating. Service charge to be agreed by all new owners.





GROUND FLOOR
708 sq.ft. (65.7 sq.m.) approx.



TOTAL FLOOR AREA : 708 sq.ft. (65.7 sq.m.) approx.

Whilst every attempt has been made to ensure the accuracy of the floorplan contained here, measurements of doors, windows, rooms and any other items are approximate and no responsibility is taken for any error, omission or mis-statement. This plan is for illustrative purposes only and should be used as such by any prospective purchaser. The services, systems and appliances shown have not been tested and no guarantee as to their operability or efficiency can be given.
Made with Metropix ©2023



Broadlands

Broadlands Estates, Library Place - JE2 3NL

01534 880770 • enquiries@broadlandsjersey.com • www.broadlandsjersey.com/

BROADLANDS

FINDING YOU A HOME SINCE 1972