



Blantyre, Le Chemin Au Greves, Grouville

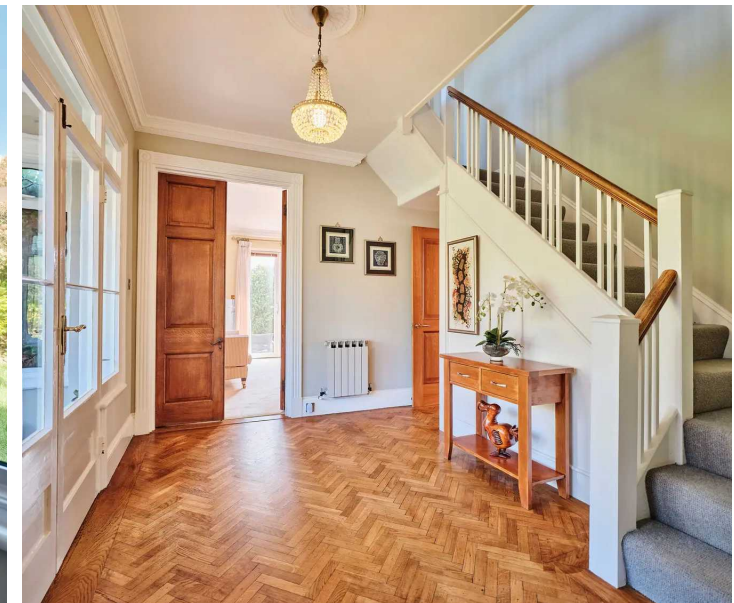
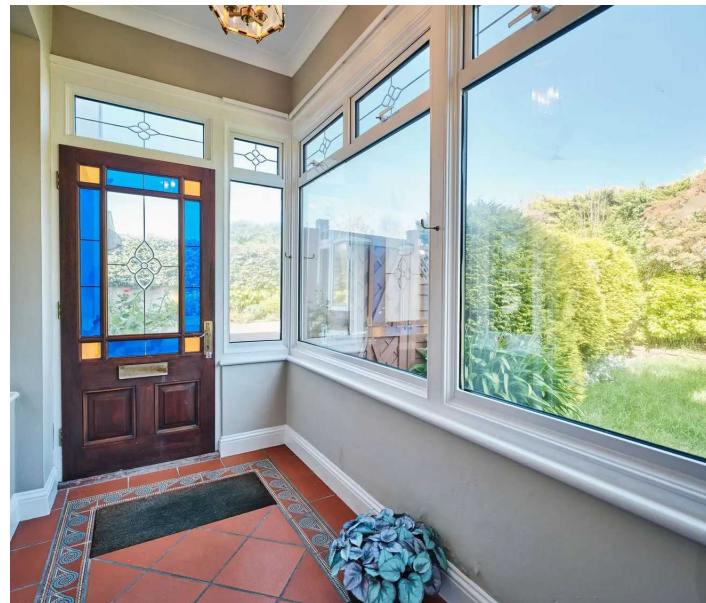
Asking **£2,295,000**

BROADLANDS

FINDING YOU A HOME SINCE 1972

Blantyre, Le Chemin Au Greves

- Spectacular family home
- A stones throw from the First Tee
- Four Reception Rooms including Orangery
- Bespoke fully fitted Cleveland Kitchen
- Five Double Bedrooms (three Ensuite)
- Sunroom with views over Golf Course to Gorey Castle
- Integral Non Qualified Studio Unit with Kitchen & Shower Room
- Spacious converted Garage/Office Block
- Gardens to three sides
- Parking to front and rear
- Sole agent
- WhatsApp Don 07829 917172 /
don@broadlandsjersey.com



Blantyre, Le Chemin Au Greves

The versatile accommodation comprises Porch, spacious Entrance Hall, Living Room - leading to large Orangery - Dining Room, eat-in Kitchen, Utility, Inner Hall, Cloakroom, Office, Shower Room and Studio - with Kitchen - on the ground floor. There are three double Bedroom suites on the first floor together with a lovely Sunroom with magnificent views over the Golf Course to Gorey Castle. The top floor provides two further Bedrooms and a further house Bathroom. A separate Garage has been converted to an Office Block. This could be restored to it's original use very easily. Gardens on three sides allow you to follow the sun, and there's plenty of parking to the front and rear. Although other houses are in the vicinity the property feels very private and is perfect for a growing family.





Living

Spacious Entrance Hall with Parquet flooring. Living Room with feature fireplace - currently supplied by bottled gas but easily put back to real fire. Marble fire surround by Chesneys of London. Fitted bookshelves to one side. Windows and double doors to Orangery and Garden. Dining Room with window to front. Bespoke fully fitted Cleveland Kitchen with double Belfast sink and granite worktops. Range of integrated appliances including Falcon gas range with double oven, second oven/microwave, fridge and wine cooler. Large Utility with granite worktops, Belfast sink and plenty of fitted units. Internal Hallway to Cloakroom and internal Office. Integral Studio unit with Kitchen and Shower Room. Sunroom with spectacular views over the Golf Course towards Gorey.

Sleeping

Large main Bedroom suite with fitted bedroom furniture and Ensuite Bathroom containing roll top bath, separate shower, basin, bidet and WC. Second Bedroom suite with lovely views and three piece Ensuite. Third Bedroom suite with two windows to rear and three piece Ensuite. Two further Bedrooms and House Bathroom on second floor.

Outside

Converted office block with two work rooms and WC. Large storage area upstairs. Lovely wrap around garden mostly laid to lawn, bordered by established trees and shrubs. Sunny patio to rear with steps to large underground storage room. Long driveway leading to front parking area. Two further parking spaces to rear.

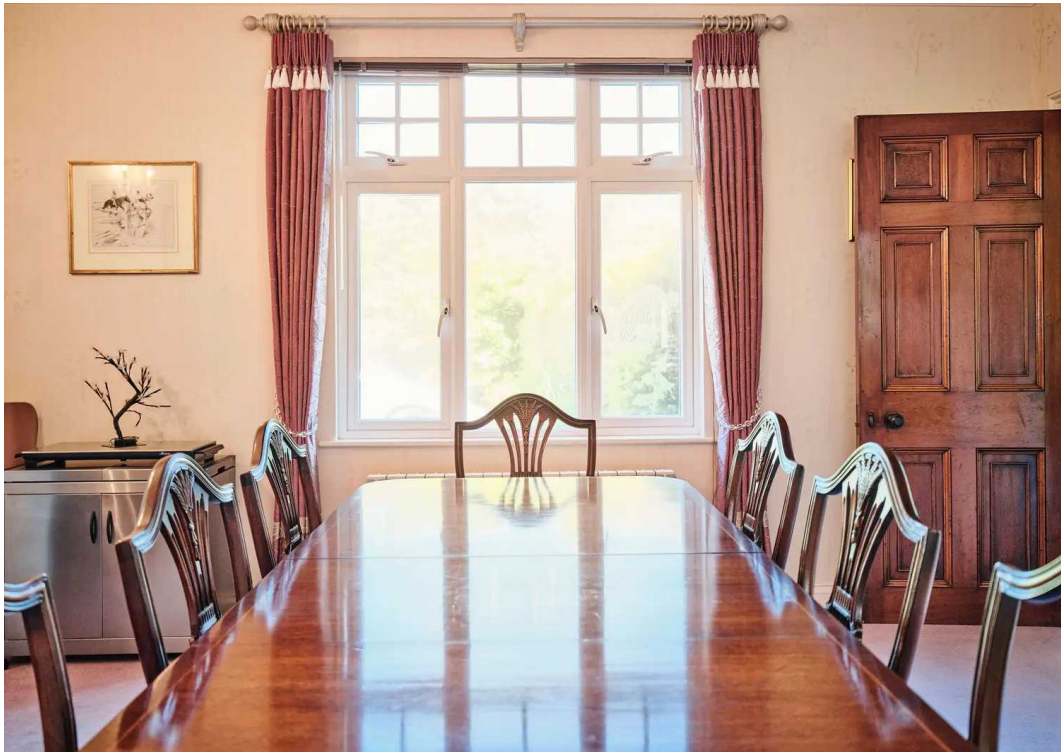
Services

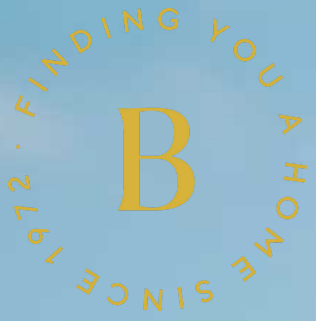
All mains. OFCH. Gas capped at property. Bottled gas used for cooking and Living Room fireplace. Fully double glazed. Large sunken rainwater storage tank for use on Garden. Wired for satellite and fibre.

Education

The house is in the catchment area for Grouville and Le Rocquier Secondary Schools.







Broadlands

Broadlands Estates, Library Place - JE2 3NL

07829 917172 • don@broadlandsjersey.com • www.broadlandsjersey.com/

BROADLANDS

FINDING YOU A HOME SINCE 1972