



Old Station House South La Rue A Don, Grouville

Asking £795,000

BROADLANDS

FINDING YOU A HOME SINCE 1972

Old Station House South La Rue A Don

Magnificent cottage on site of the old train station in Gorey Village.

- Gorey Village cottage on site of historic train station
- You can still see the platform!
- So close you can hear the sea!
- Relaxing living room and separate fully fitted kitchen
- Orangery
- Large double bedroom with balcony and magnificent sea view
- Sunny private garden with access to beach and common
- Top finish and full of character
- Spacious and very light
- Parking
- Sole agent
- WhatsApp Don 07829 917172 / don@broadlandsjersey.com



Old Station House South La Rue A Don

Magnificent cottage on site of the old train station in Gorey Village.

Magnificent cottage on site of the old train station in Gorey Village. The Jersey Eastern Railway began its service from St Helier to Grouville on 6 August 1873. A few weeks later on Wednesday, 27 August, the line was extended to Gorey Village and this building served as the station. Eighteen years later the line was added to further as far as Gorey Pier, opening in May 1891. The service ran for more than 50 years, until its closure in 1929. In 2003 Antler Properties redeveloped the site which involved taking the building back to the bare shell.

In keeping with the theme, the resulting cottage has various features including a railway style board showing the house name, and a patio going to the side of the original platform. The finish is to a very high standard with features including natural slate floor tiles throughout the ground floor and stylish windows befitting the character of the building.

A stunning house with oodles of character and an exciting history ideal for a couple or single person. Although it only has the one bedroom, the house is more spacious than first impressions suggest. Contact the owner's sole agent now to view.

Historical information source: thislandwiki.com





Living

Relaxing living room with double doors to orangery. Fully fitted kitchen with integrated appliances including gas hob, extractor, double oven, fridge, freezer and dishwasher. Orangery with recently updated roof and door to garden. Cloakroom.

Sleeping

Large double bedroom with high ceiling and doors to bathroom and study/dressing room. Good size clothes cupboard over stairs. Double doors to balcony with lovely sea view.

Outside

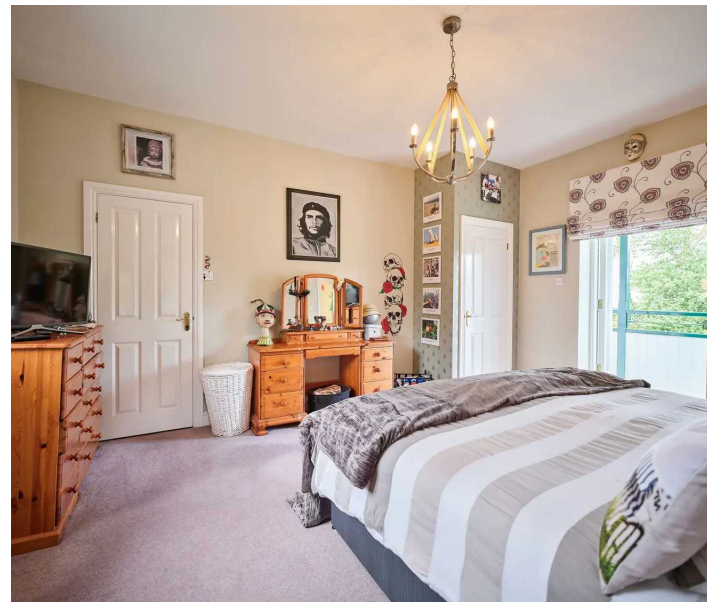
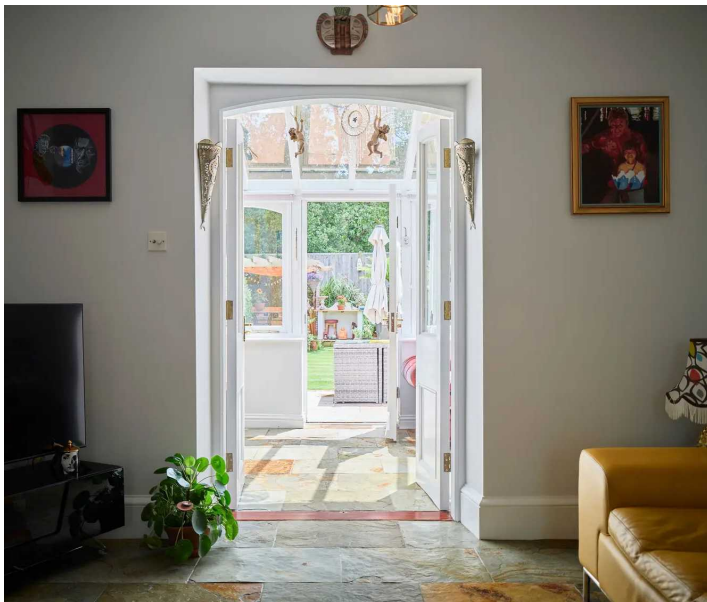
Stunning enclosed garden to rear mostly laid to lawn with original station platform converted to patio. Sun from early morning to late evening. Summerhouse with bar. Steps at the rear of the garden provide access to the common and beach beyond. Second garden to side comprising various trees and shrubs. One owned parking space. Lots of free visitor parking in the large car park close to the house.

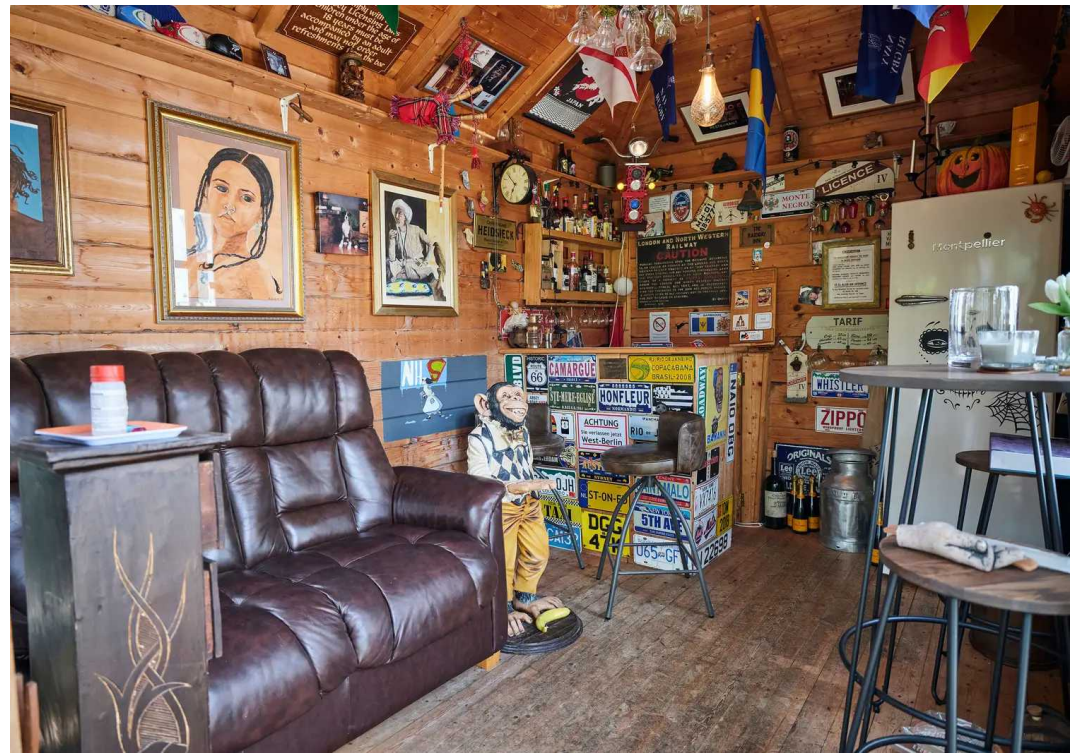
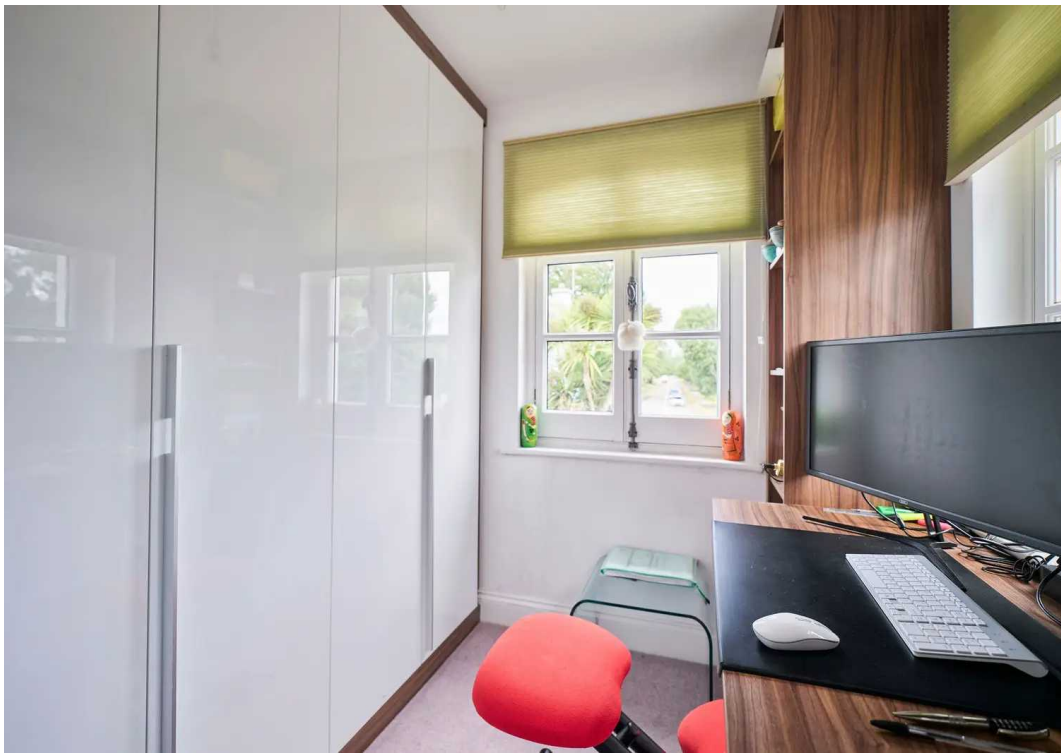
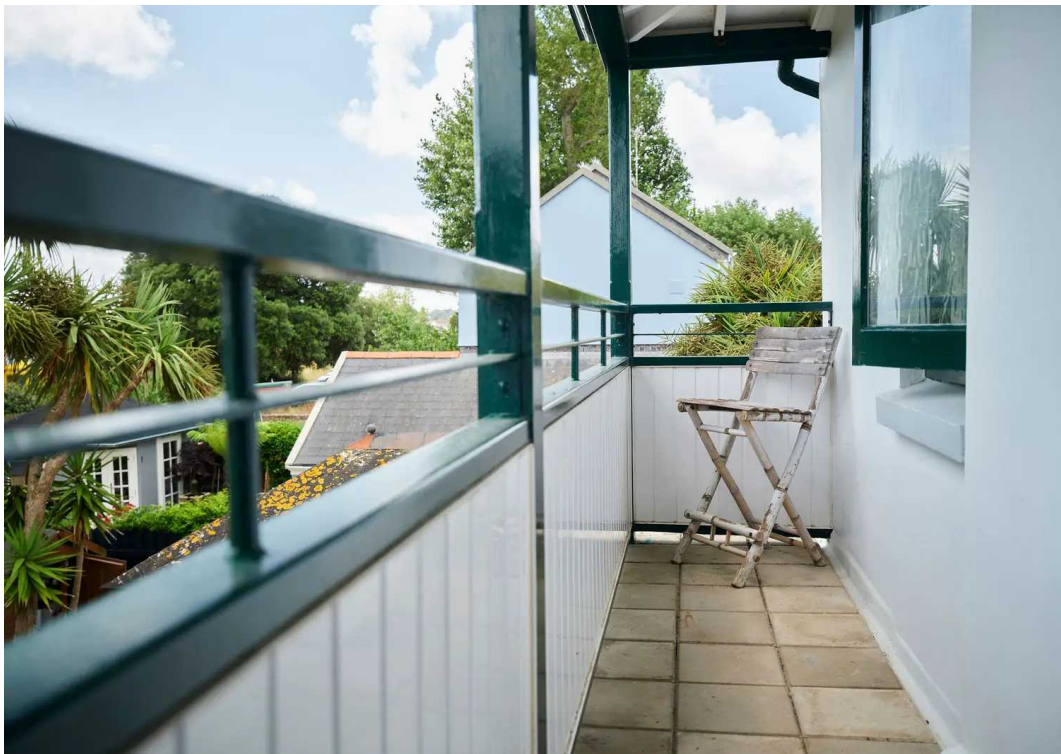
Services

All mains including gas central heating. Gas hob in kitchen. Wired for satellite and fibre.

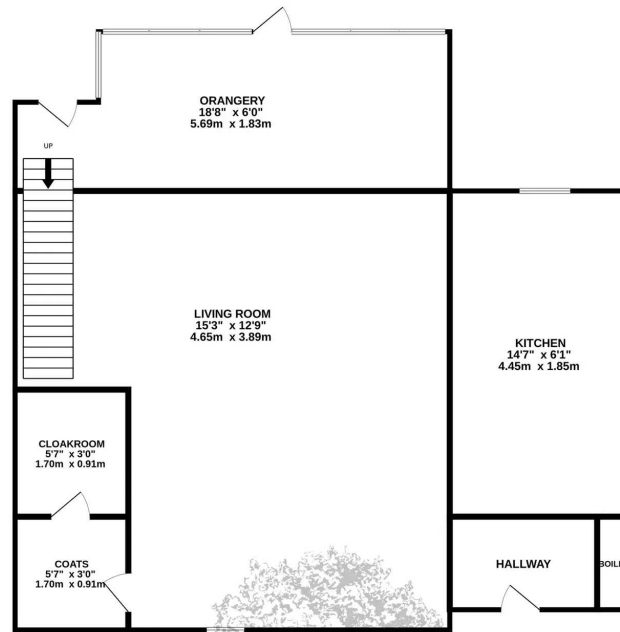
Education

The cottage is in the catchment area for Grouville Primary and Le Rocquier Secondary Schools.

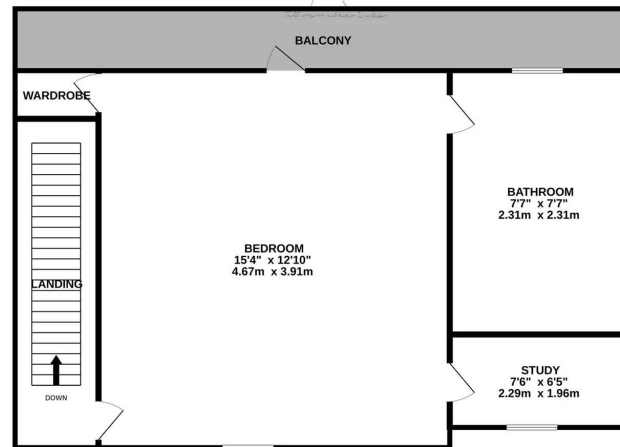




GROUND FLOOR



1ST FLOOR





Broadlands

Broadlands Estates, Library Place - JE2 3NL

07829 917172 • don@broadlandsjersey.com • www.broadlandsjersey.com/

BROADLANDS

FINDING YOU A HOME SINCE 1972