



SINCE 1972. FINDING YOU A HOME

B

Le Ruisseaux Lodge, Les Ruisseaux, St. Brelade
£7,950,000

BROADLANDS

FINDING YOU A HOME SINCE 1972

Le Ruisseaux Lodge, Les Ruisseaux

St. Brelade, Jersey

- Spectacular four bedroom/ four bathroom "Arts & Crafts" home
- In highly sought after St Brelade location
- Gated driveway with ample parking
- Beautiful mature landscaped gardens with large terraces and lawn
- Five reception rooms, including panelled living room with wood burning stove, elevated sunroom overlooking the garden, sitting room and study
- Superb main bedroom with fully fitted dressing room, sitting area, ensuite and double doors to large balcony
- Elevated position with all day sunshine
- Oversize double garage with staff flat/ home office above
- Impeccably presented and finished to the highest standard with top quality fittings and finishes
- Handcrafted wine store
- Spacious kitchen/ family room with hand crafted units, granite worktops, central island and Miele appliances
- Large heated swimming pool
- Contact Allison on 07797750720 or Erica on 07797712094



Le Ruisseaux Lodge, Les Ruisseaux

St. Brelade, Jersey

Truly spectacular four-bedroom, four-bathroom "Arts & Crafts" masterpiece situated in the highly sought-after St Brelade location. Boasting an impressive gated driveway with ample parking, this exquisite detached house is a serene retreat set on beautiful mature landscaped gardens, complete with expansive terraces, large pool and an immaculate lawn. With its classic architectural charm, this home offers an inviting and grand living experience, offering five spacious reception rooms. The panelled living room features a wood-burning stove, creating a warm and welcoming ambience. The elevated sunroom provides breath-taking views of the garden, while the sitting room and study offer versatile spaces for relaxation or work. The spacious kitchen/family room serves as the heart of the home, graced with handcrafted units, elegant granite worktops, and a central island. Top-of-the-line Miele appliances cater to all your culinary needs, ensuring a seamless and enjoyable cooking experience. There is a fantastic wine room with handcrafted cabinets. The main bedroom is truly remarkable, featuring a fully fitted dressing room, a comfortable sitting area, and an en-suite bathroom. Double doors open onto a large balcony, allowing you to start your days with panoramic views and a gentle breeze. Nestled on an elevated position, this charming abode basks in all-day sunshine, creating a serene and inviting atmosphere throughout. There are a further three spacious double bedrooms, two with en-suite bathrooms plus a large luxurious main bathroom. Further enhancing this remarkable property is an oversized double garage, complete with a convenient staff flat, home office or gym above. Impeccable presentation and attention to detail are evident throughout, with high-quality fittings and finishes that exude sophistication and refinement. Completing this luxurious property is a large heated swimming pool, providing the perfect setting for relaxation and rejuvenation. Don't miss this opportunity to own a truly remarkable property that offers exceptional craftsmanship, elegance, and an enviable lifestyle.





Living

Spacious hand crafted kitchen with top of the range appliances and granite worktops. Central island plus space for relaxing and dining. Additional reception rooms include large panelled living room with wood burning stove, sun-room with views over the gardens, fully fitted study and sitting room with doors out to the terrace. Wine cellar with handcrafted units.

Sleeping

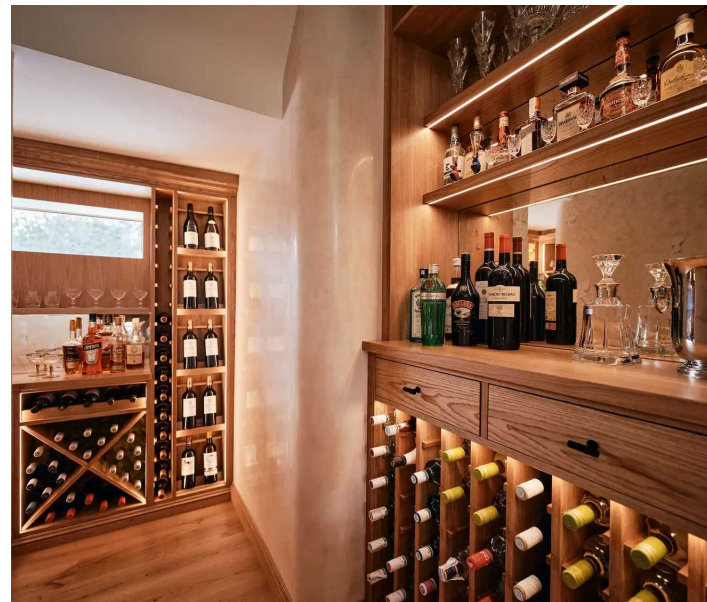
Four spacious double bedrooms with fitted wardrobes, three with en-suite bathrooms plus large main bathroom. Includes spectacular main bedroom suite with dressing room, sitting area, balcony and en-suite.

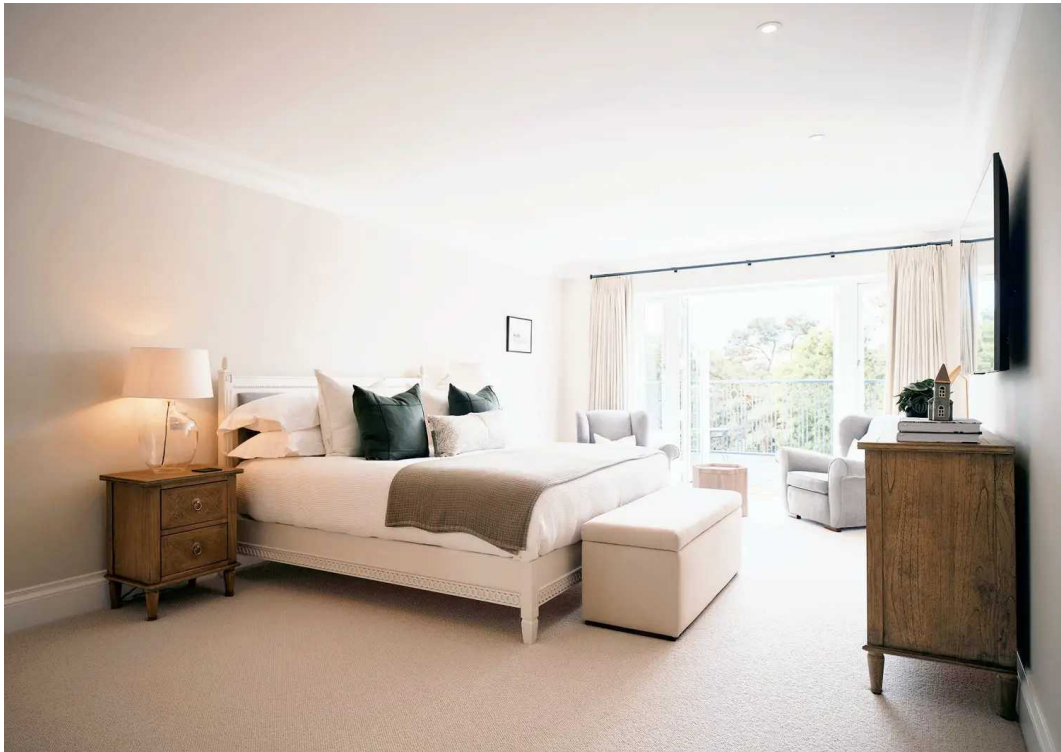
Outside

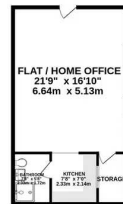
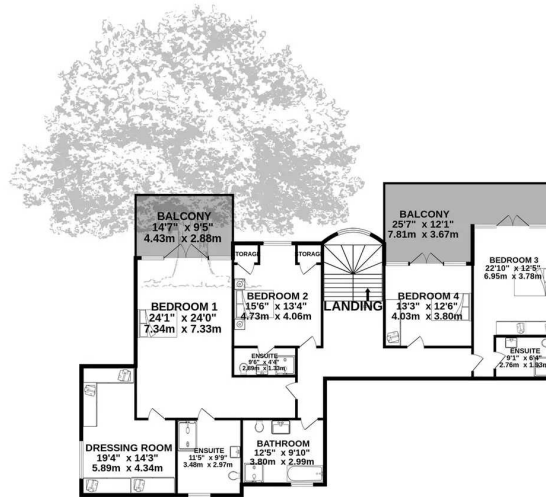
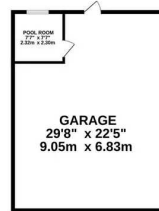
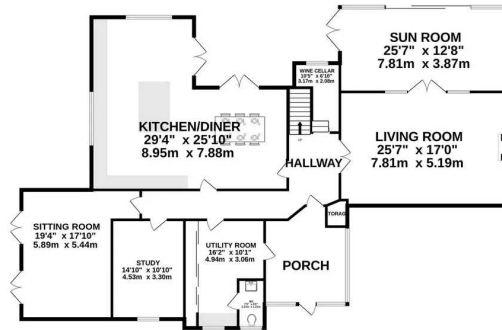
Mature landscaped gardens with lawn, large terraces and very good size swimming pool. Gated driveway with ample parking plus large double garage with flat above, ideal for staff, home office or gym.

Services

Fully double glazed. Mains drains and water. Oil fired central heating plus electric underfloor heating in bathrooms.







TOTAL FLOOR AREA : 5471 sq.ft. (508.3 sq.m.) approx.

Whilst every attempt has been made to ensure the accuracy of the floorplan contained here, measurements of doors, windows, rooms and any other items are approximate and no responsibility is taken for any error, omission or mis-statement. This plan is for illustrative purposes only and should be used as such by any prospective purchaser. The services, systems and appliances shown have not been tested and no guarantee as to their operability or efficiency can be given.
Made with Metropix ©2023



Broadlands

Broadlands Estates, Library Place - JE2 3NL

01534 880770 • enquiries@broadlandsjersey.com • www.broadlandsjersey.com/

BROADLANDS

FINDING YOU A HOME SINCE 1972