

SINCE 1972 · FINDING YOU A HOME
B



5 Maitland Court La Route Des Petites Camps, St. Helier
£525,000

BROADLANDS

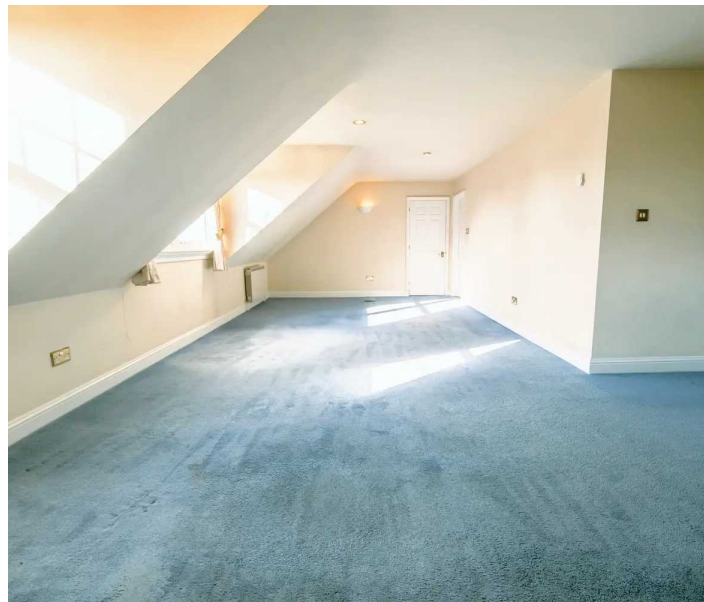
FINDING YOU A HOME SINCE 1972

5 Maitland Court La Route Des Petites Camps

St. Helier, Jersey

Driving along Route du Petit Clos take a left into Route de Petits Camps, then take the first left.

- Spectacular sized, purpose built country apartment 1600 sq. ft
- 2 bedroom 2 bathrooms
- Cash buyers only
- Eat in kitchen
- Magnificent sized lounge/diner
- Top floor apartment with country and distant sea views
- Modernisation required
- Sole agents
- 2 designated parking and visitor parking
- Magnificent communal gardens and heated pool
- Please call Doug on 07700702585 or doug@broadlandsjersey.com



5 Maitland Court La Route Des Petites Camps

St. Helier, Jersey

Cash buyers only. It is very rare to see a purpose built apartment of this size come to the market, it also has wonderful country and distant sea views. One of only five apartments in the building. Delightful manicured communal garden and heated swimming pool. All rooms enjoy plenty of natural light. Terrific spacious lounge with room for dining table and chairs and functional fireplace. Separate eat in kitchen and integrated appliances. Two generous double bedrooms, main bedroom with walk in dressing room and En-suite bathroom, and a additional house bathroom. With two parking spaces and ample visitor parking.

This great size apartment needs modernisation throughout. Conveniently located near the St Helier / Trinity boarder and only ten minute drive to town. For all your shopping needs several large supermarkets are nearby, so too are superb leafy country walks moments from your doorstep via the many green lanes.

Early viewing essential through Broadlands the vendor's agent.





Living

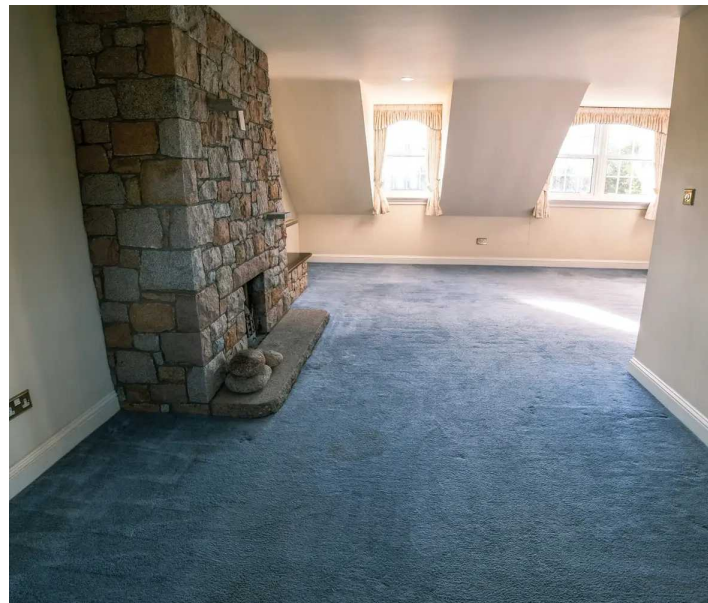
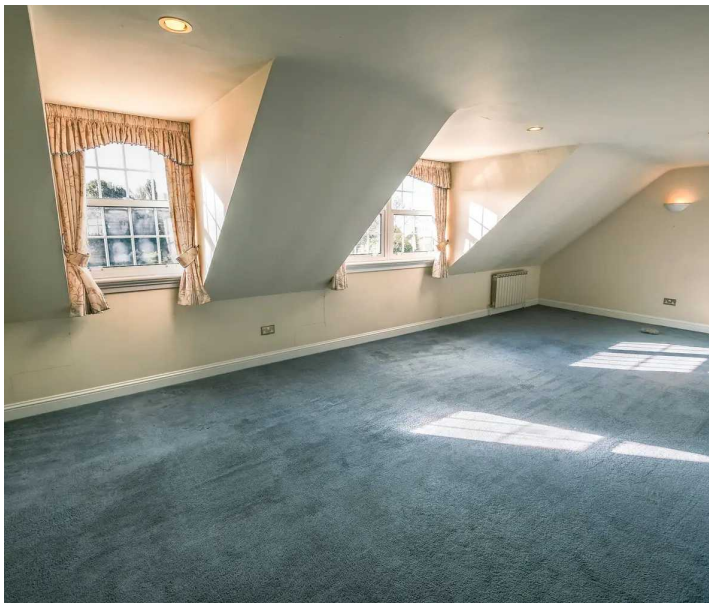
Eat in kitchen, large lounge/diner with granite fireplace.

Sleeping

Main bedroom with a En-suite bathroom and dressing room.
Generous second bedroom and house bathroom.

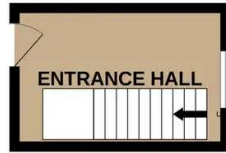
Services

All main services, gas heating and double glazing. Service charges £150 pcm.

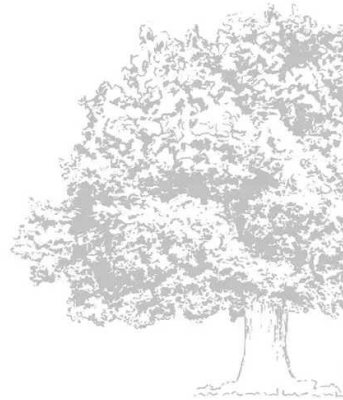




FIRST FLOOR
100 sq.ft. (9.3 sq.m.) approx.

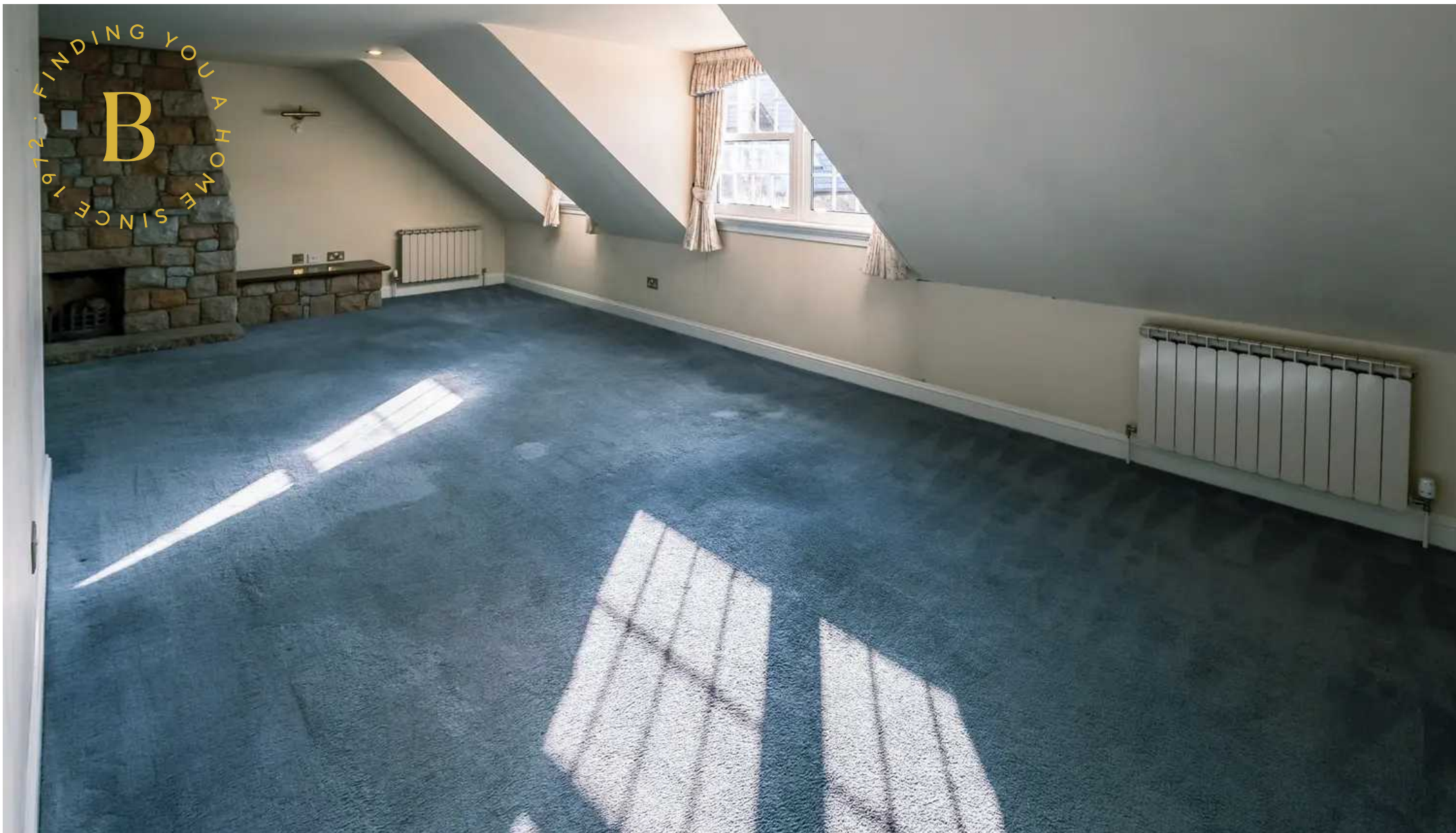


SECOND FLOOR
1500 sq.ft. (139.4 sq.m.) approx.



TOTAL FLOOR AREA: 1600sq.ft. (148.6 sq.m.) approx.

Whilst every attempt has been made to ensure the accuracy of the floorplan contained here, measurements of doors, windows, rooms and any other items are approximate and no responsibility is taken for any error, omission or mis-statement. This plan is for illustrative purposes only and should be used as such by any prospective purchaser. The services, systems and appliances shown have not been tested and no guarantee as to their operability or efficiency can be given.
Made with Metropix ©2023



FINDING YOU A HOME
SINCE 1972
B

Broadlands

Broadlands Estates, Library Place - JE2 3NL

01534 880770 • enquiries@broadlandsjersey.com • www.broadlandsjersey.com/

BROADLANDS

FINDING YOU A HOME SINCE 1972