



FINDING YOU A HOME SINCE 1972
B

Flat 2, 4 Norfolk Terrace Rouge Bouillon, St Helier, Jersey
£425,000

BROADLANDS
FINDING YOU A HOME SINCE 1972

Flat 2, 4 Norfolk Terrace Rouge Bouillon

St Helier, Jersey

- Spacious first floor apartment
- Totally renovated throughout
- Additional home office
- High ceilings and natural light
- Attractive period property
- Parking for one car
- Please contact Nigel on 07797 718233 or nigel@broadlandsjersey.com



Flat 2, 4 Norfolk Terrace Rouge Bouillon

St Helier, Jersey

A most attractive Georgian facade with stone steps, balustrade and beautiful period shutters greets you on arrival. The grand entrance hall gives access to stairs to the first floor. Inside all has been renovated to a very high standard and decorated in a neutral fashion. The whole building has been renovated from top to bottom with new roof, insulation, wiring and plumbing. All has been completed sympathetically so as to maintain the elegant look of the building.

The main living is all at first floor level but, in addition, across the half landing is a separate room with it's own en suite cloakroom. This is perfect as a home office. The lounge features an original fireplace (non functional) and attractive refurbished sash windows providing plenty of natural light throughout.

Much larger than the average one bedroom apartment, this will make a fabulous home for the new occupier. Parking is provided for one car but, being on the town outskirts, walking to work or the shops is an easy option.

Offered with immediate vacant possession, book your appointment to view now.





Living

Spacious living room diner with high ceiling and plenty of natural light. Newly fitted kitchen with all appliances.

Sleeping

Large double bedroom with high ceiling and plenty of natural light. Attractive en suite shower room.

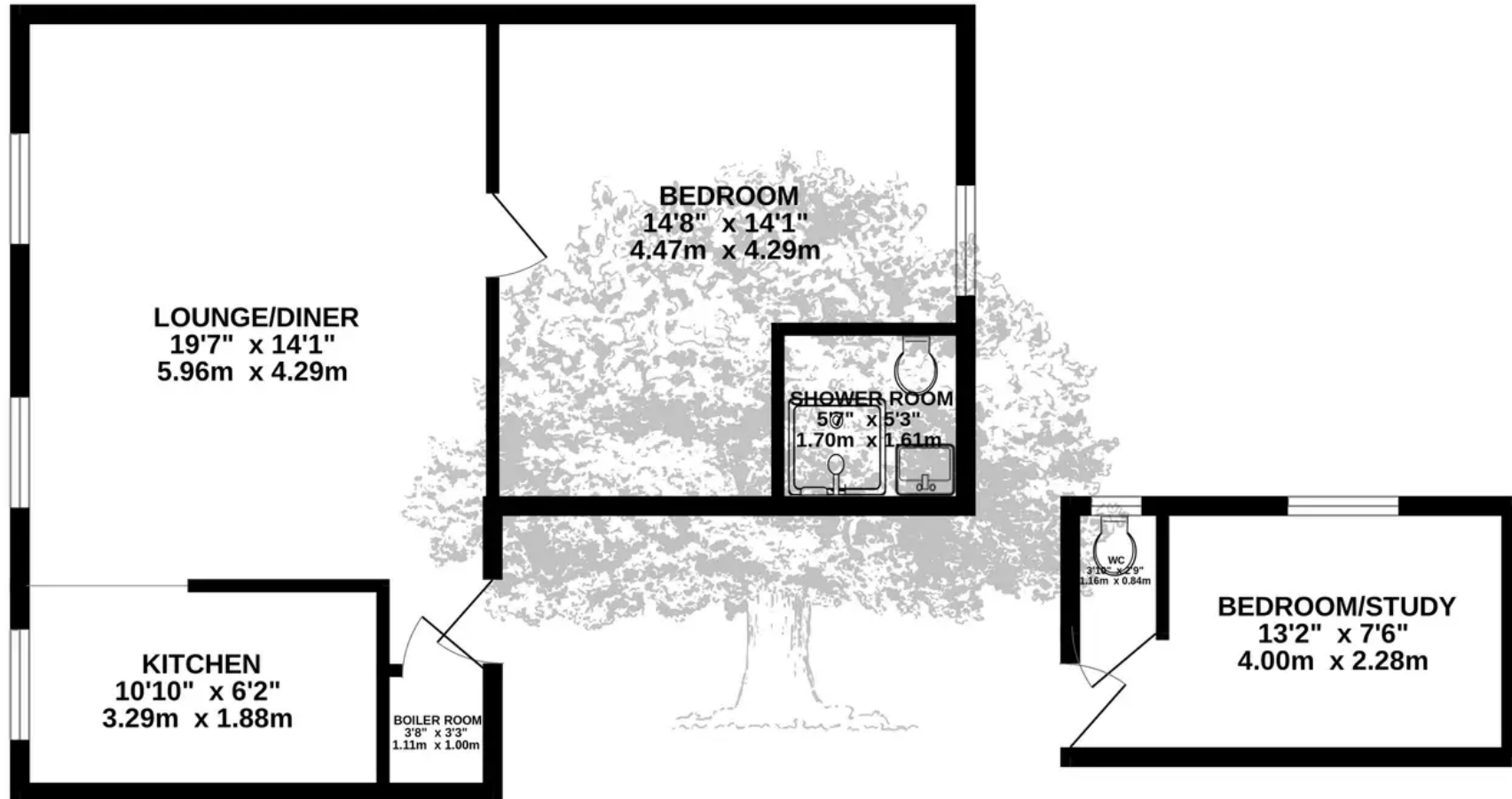
Office

A great home office or occasional bedroom with en suite cloakroom.





FIRST FLOOR
747 sq.ft. (69.4 sq.m.) approx.



TOTAL FLOOR AREA : 747 sq.ft. (69.4 sq.m.) approx.

Whilst every attempt has been made to ensure the accuracy of the floorplan contained here, measurements of doors, windows, rooms and any other items are approximate and no responsibility is taken for any error, omission or mis-statement. This plan is for illustrative purposes only and should be used as such by any prospective purchaser. The services, systems and appliances shown have not been tested and no guarantee as to their operability or efficiency can be given.
Made with Metropix ©2023



Broadlands

Broadlands Estates, Library Place - JE2 3NL

01534 880770 • enquiries@broadlandsjersey.com • www.broadlandsjersey.com/

BROADLANDS

FINDING YOU A HOME SINCE 1972