



SINCE 1972 · FINDING YOU A HOME

B

6 Portman House, 32 Hue Street, St Helier
£459,000

BROADLANDS

FINDING YOU A HOME SINCE 1972

6 Portman House, 32 Hue Street

St Helier, Jersey

- Spectacular 2 bedroom, 2 bathroom ground floor apartment
- Recently refurbished throughout
- Great size - 948 sq. ft
- Convenient location on the edge of town
- Stunning kitchen
- Sole agent
- Call Doug on 07700702585 or doug@broadlandsjersey.com



6 Portman House, 32 Hue Street

St Helier, Jersey

Fantastic newly refurbished 2 bedroom ground floor apartment in a solid purpose built block of only 3 similar apartments. Much larger than the average size boasting 948 sq. ft of space. The property offers 2 double bedrooms, 2 bathrooms (1 en-suite) and a generous size open plan living space with fully fitted kitchen and breakfast bar. There is a designated external store, plus bike storage with charging points. Finished to an extremely high standard with no expense spared. Situated in a prime central town location with plenty of amenities on your doorstep. Broadlands are delighted to be sole agent.





Living

Modern open plan living area, stunning kitchen with island, full range of integrated appliances and separate larder.

Sleeping

Two doubles bedrooms with fitted wardrobes. Two bathrooms, one an en-suite.

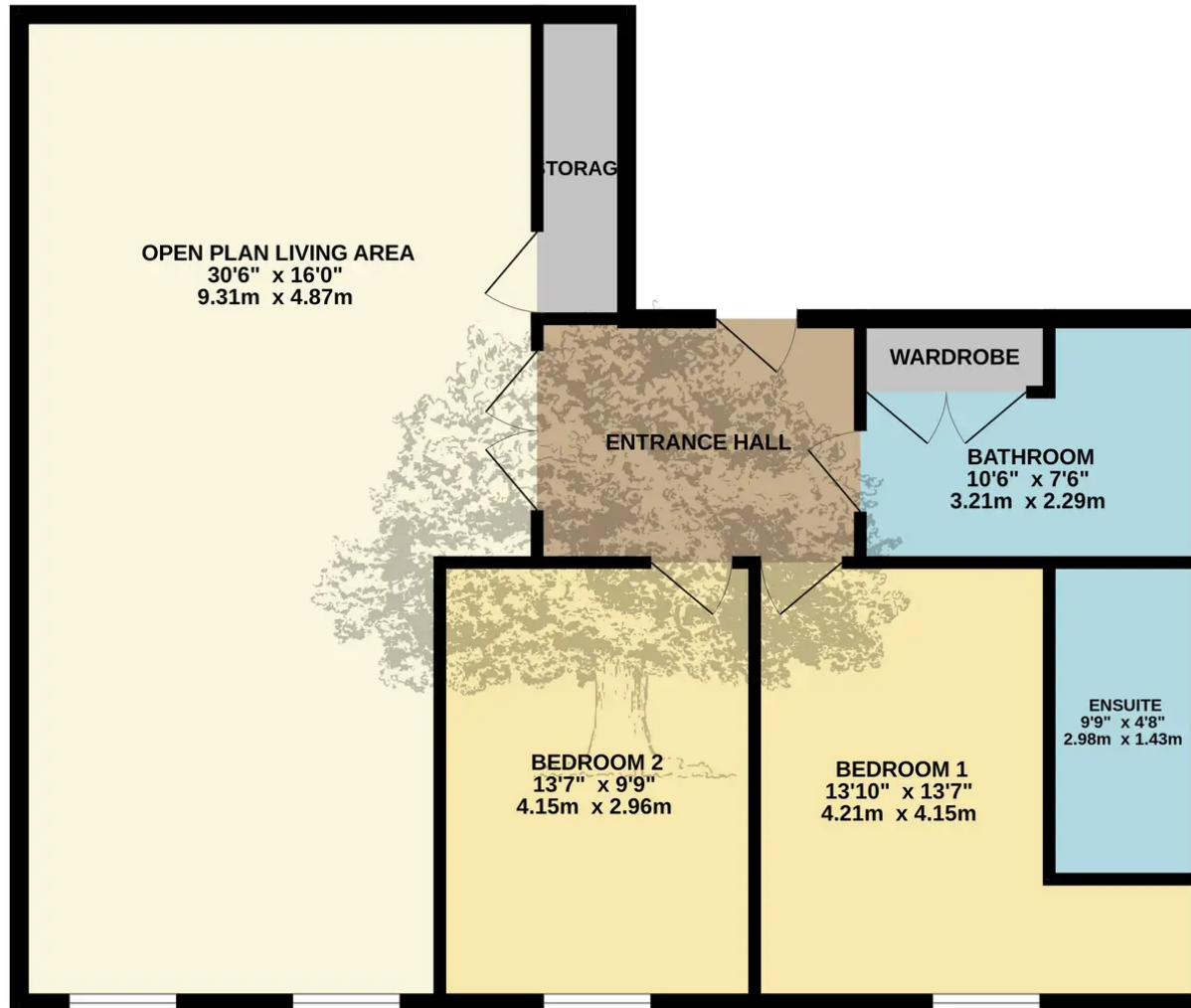
Services & further information

All mains, electric underfloor heating and double glazing. Service charges £129 pcm. Management company APM.





GROUND FLOOR
948 sq.ft. (88.0 sq.m.) approx.



TOTAL FLOOR AREA : 948 sq.ft. (88.0 sq.m.) approx.

Whilst every attempt has been made to ensure the accuracy of the floorplan contained here, measurements of doors, windows, rooms and any other items are approximate and no responsibility is taken for any error, omission or mis-statement. This plan is for illustrative purposes only and should be used as such by any prospective purchaser. The services, systems and appliances shown have not been tested and no guarantee as to their operability or efficiency can be given.
Made with Metropix ©2023



Broadlands

Broadlands Estates, Library Place - JE2 3NL

01534 880770 • enquiries@broadlandsjersey.com • www.broadlandsjersey.com/

BROADLANDS

FINDING YOU A HOME SINCE 1972