



FINDING YOU A HOME
SINCE 1972
B

Flat 1 21 Simon Place, St. Helier, Jersey
£259,000

BROADLANDS
FINDING YOU A HOME SINCE 1972

Flat 1 21 Simon Place

St. Helier, Jersey

- Newly refurbished apartment
- Attractive new kitchen
- Spacious shower room
- High quality throughout
- Ground floor living
- Town outskirts location
- Please contact Nigel on 07797 718233 or nigel@broadlandsjersey.com



Flat 1 21 Simon Place

St. Helier, Jersey

Just renovated throughout to a high standard, this light and airy ground floor apartment is absolutely ready to move in. Designed as open plan with an attractive new white kitchen with integrated appliances. Work surfaces have a marbled effect and the choice of tiling makes this a great place to be.

To the rear is a good size double bedroom with a newly fitted spacious shower room adjacent.

Nearby are all you could wish for, Co op Grand Marche, a corner shop and the Millennium Park. It's just a short stroll to the town centre.



**Living**

Open plan living area with newly fitted white kitchen. All integrated appliances and attractive work surfaces and splash backs.

Sleeping

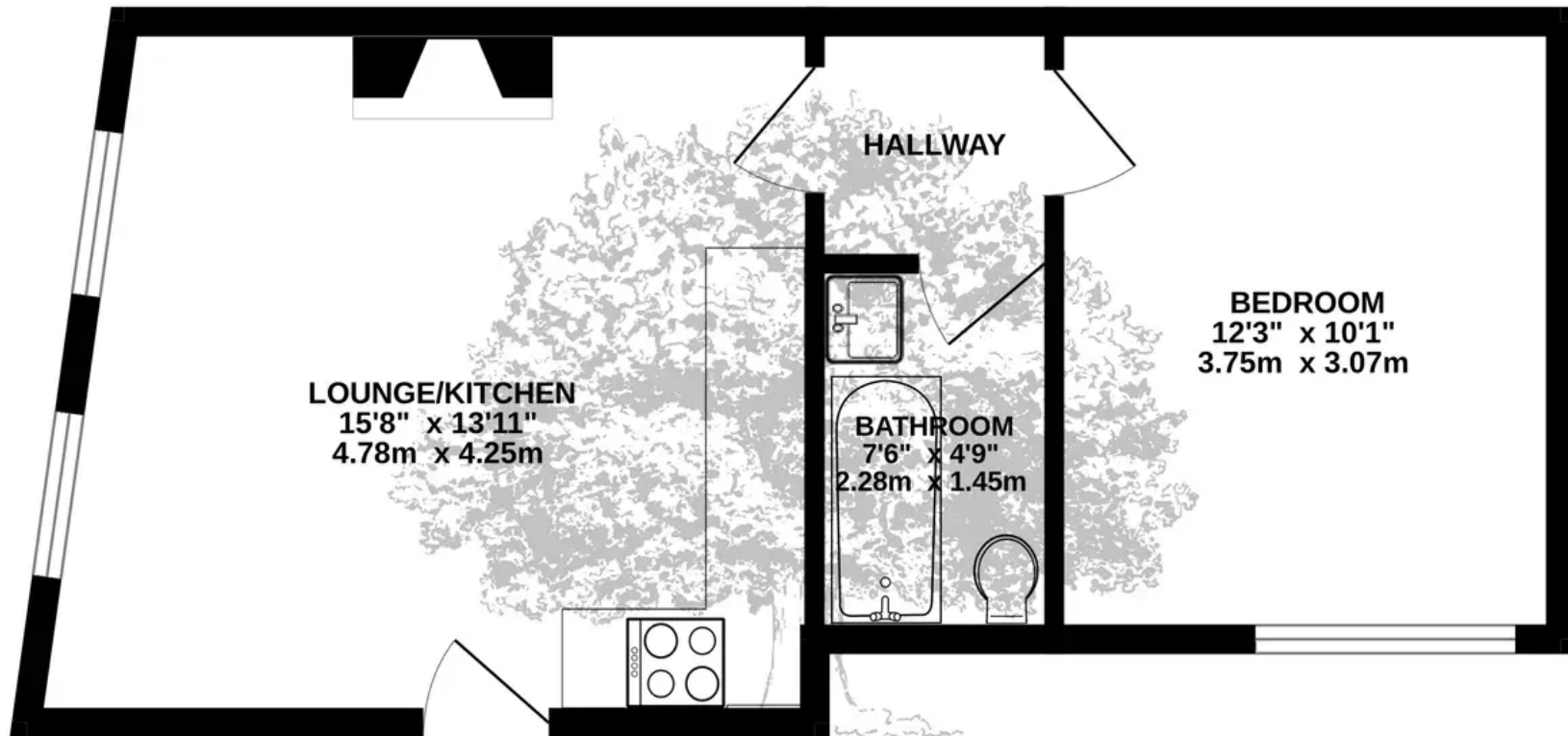
Good size double bedroom.

Services

All mains (no gas), double glazing and electric heating.



GROUND FLOOR
415 sq.ft. (38.6 sq.m.) approx.



TOTAL FLOOR AREA : 415 sq.ft. (38.6 sq.m.) approx.

Whilst every attempt has been made to ensure the accuracy of the floorplan contained here, measurements of doors, windows, rooms and any other items are approximate and no responsibility is taken for any error, omission or mis-statement. This plan is for illustrative purposes only and should be used as such by any prospective purchaser. The services, systems and appliances shown have not been tested and no guarantee as to their operability or efficiency can be given.
Made with Metropix ©2024



Broadlands

Broadlands Estates, Library Place - JE2 3NL

01534 880770 • enquiries@broadlandsjersey.com • www.broadlandsjersey.com/

BROADLANDS

FINDING YOU A HOME SINCE 1972