

**TO LET**



**Jarvis Road, South Croydon**

**2 Bedrooms, 1 Bathroom, Semi-Detached House**

**£1,750 pcm**

**MARTIN&CO**



## Jarvis Road, South Croydon

2 Bedrooms, 1 Bathroom

£1,750 pcm

Date available: Available Now

Deposit: £2,019.23

Furnished

Council Tax band: C

- Handsome Period House
- Upstairs Large Bathroom
- 2 Bedrooms
- 2 Reception Rooms
- Lovely Kitchen
- 10 Minutes to South Croydon Station
- Sunny South Facing Garden

There are many Victorian houses in this popular part of South Croydon but few can offer the combination of timeless charm and space combined with a smart modern interior of this handsome bay fronted Victorian house, whose lovely exterior gives you a flavour of what is to follow. You will not be disappointed!

The accommodation affords an entrance lobby, a cosy reception room with plantation shutters, elegant second reception room/dining room, a fitted kitchen, landing, a master bedroom with fitted wardrobes and plantation shutters, a second double bedroom and a particularly spacious upstairs bathroom with plenty of storage. Other features to note include gas heating.

Externally there is a sunny and secluded South-facing garden, ideal for al fresco entertaining.

South Croydon Station lies approximately half a mile away and there are excellent bus services and local shops nearby on Brighton Road. Parking is free in the road outside.

Call Martin & Co Croydon now for an appointment to





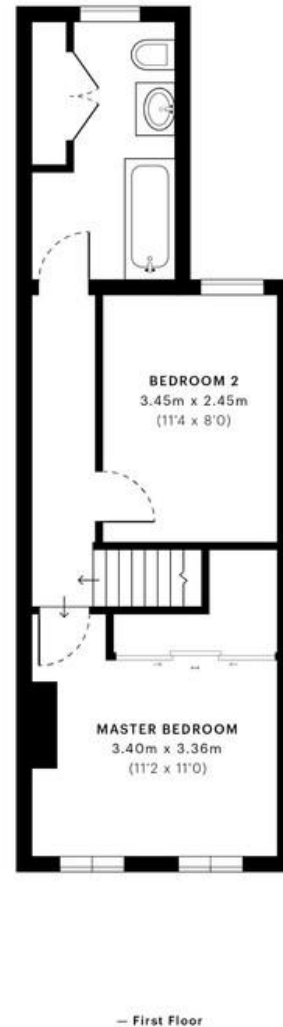
view!





Score	Energy rating	Current	Potential
92+	A		
81-91	B		88 B
69-80	C		
55-68	D	65 D	
39-54	E		
21-38	F		





**Martin & Co Croydon**

145 Brighton Road • South Croydon • CR2 6EF  
T: 0208 688 8565 • E: croydon@martinco.com

**0208 688 8565**

<http://www.martinco.com>

**MARTIN&CO**

**Accuracy:** References to the Tenure of a Property are based on information supplied by the Seller. The Agent has not had sight of the title documents. A Buyer is advised to obtain verification from their Solicitor. Items shown in photographs including but not limited to carpets, fixtures and fittings are not included unless specifically mentioned within the sales particulars. They may however be available by separate negotiation. Buyers must check the availability of any property and make an appointment to view before embarking on any journey to see a property. No person in the employment of the agent has any authority to make any representation about the property, and accordingly any information given is entirely without responsibility on the part of the agents, sellers(s) or lessors(s). Any property particulars are not an offer or contract, in or for part of one. **Sonic / laser Tape:** Measurements taken using a sonic / laser tape measure may be subject to a small margin of error. **All Measurements:** All Measurements are Approximate. **Services Not tested:** The Agent has not tested any apparatus, equipment, fixtures and fittings or services and so cannot verify that they are in working order or fit for the purpose. A Buyer is advised to obtain verification from their Solicitor or Surveyor. **Mortgage & Financial Advice:** The Martin & Co mortgage service is provided by London & Country Mortgages the UK's largest Independent Fee-Free mortgage broker of Beazer House, Lower Bristol Road, Bath, BA2 3BA. Authorised and regulated by the Financial Conduct Authority. Their FCA number is 143002. YOUR HOME IS AT RISK IF YOU DO NOT KEEP UP REPAYMENTS ON A MORTGAGE OR OTHER LOANS SECURED ON IT. Full written quotation available on request. A suitable life policy may be required. Loans subject to status. Minimum age 18. If you are making a cash offer, we shall require written confirmation of the source and availability of your funds in order that our client may make an informed decision

