

The logo for Andrew Pearce PINNER, featuring a gold crown icon above the text "Andrew Pearce" in a serif font and "PINNER" in a smaller, sans-serif font below it, all set against a dark background.

Andrew Pearce  
PINNER

CHISWICK COURT, MOSS LANE, HA5 3AP £375,000



A spacious two bedroom ground floor flat located in this highly desirable turning off Moss lane and within a short walk to Pinner Village.

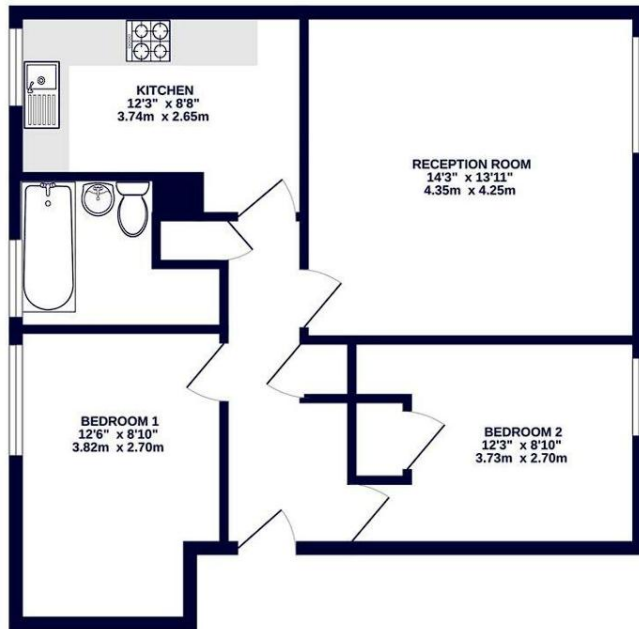
The property has been tastefully decorated throughout and benefits include double glazing and gas central heating. Accommodation comprises communal entrance to the front door, entrance hallway with two large storage cupboards, spacious lounge, modern kitchen and bathroom and two double bedrooms. Outside there are beautifully manicured gardens and communal parking.

Furthermore, the flat benefits from a garage in a block and a lease in excess of 900 years.

Positioned favourably, this lovely ground floor apartment offers convenient access to Pinner Village's shopping and transport facilities including the Metropolitan Line tube station.



GROUND FLOOR  
626 sq.ft. (58.2 sq.m.) approx.



TOTAL FLOOR AREA: 626 sq.ft. (58.2 sq.m.) approx.  
Whilst every attempt has been made to ensure the accuracy of the floorplan contained here, measurements of plots, windows, rooms and any other items are approximate and no responsibility is taken for any error, omission or mis-statement. This plan is for illustrative purposes only and should be done in work by any prospective purchaser. The services, systems and appliances shown have not been tested and no guarantee as to their operability or efficiency can be given.  
Made with Metropia C024



