



# 4 Bedroom Detached Chalet Bungalow

Guide Price  
£675,000 - £725,000



JOHN ALEXANDER  
ESTATE AGENTS

Find us on..



JOHN ALEXANDER  
ESTATE AGENTS

# Primroses, Straight Road Colchester CO3 9DU

## FULL DESCRIPTION

### THE HOME

The home is a stunning detached chalet bungalow, situated on Straight Road, a convenient and well-connected thoroughfare. The property has four spacious bedrooms, two bathrooms, and a large reception room. The bungalow is set back from the road, with a driveway and a garage providing ample parking space. The rear garden is landscaped and secluded, offering a peaceful and relaxing outdoor area.

### THE LOCATION

The property is in the catchment area for Lexden Primary School and Colchester County High School for Girls, both rated outstanding by Ofsted. The property is also close to various shops, restaurants, and amenities. This is a rare opportunity to own a beautiful and spacious home in a desirable location.



4



2



E



EPC

D





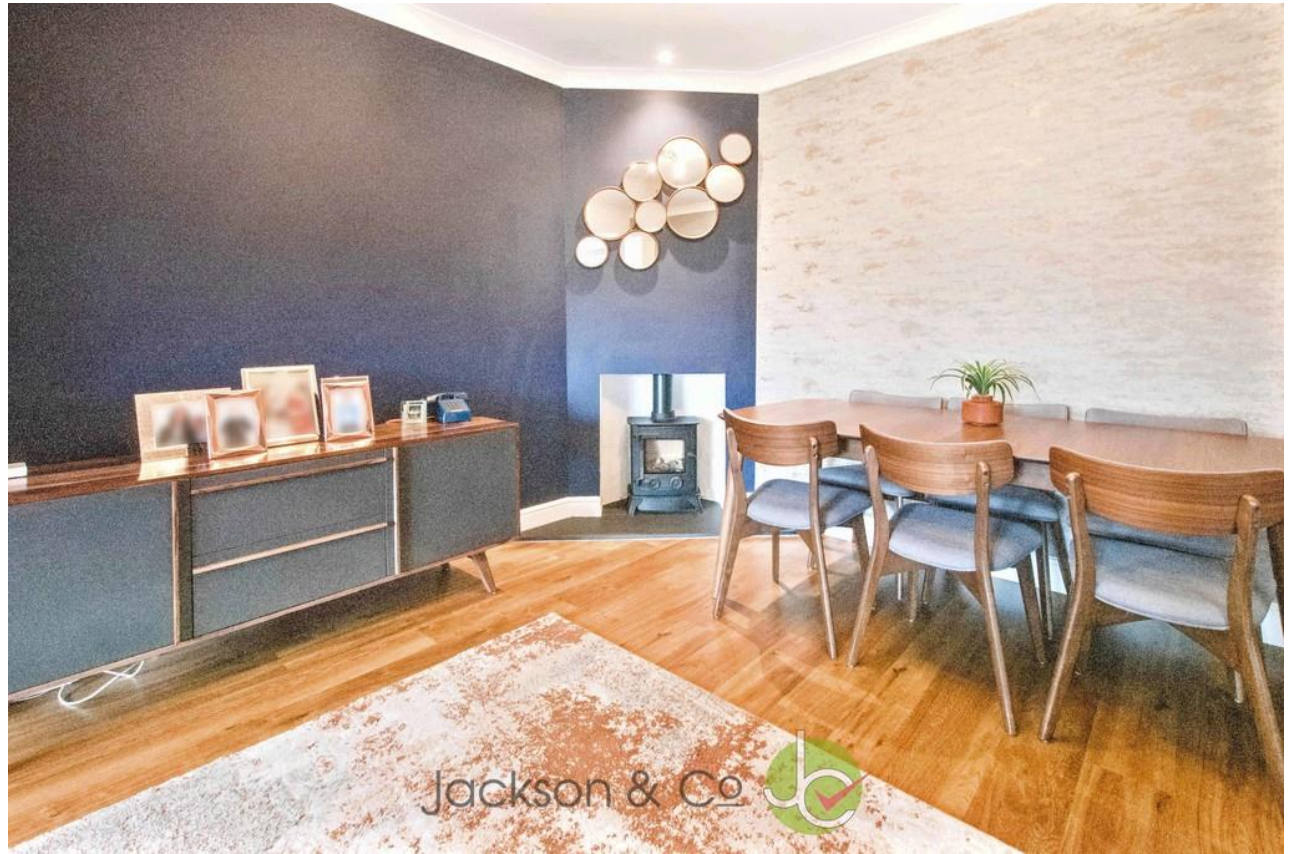






Primroses, Straight road, Colchester, CO3 9DU

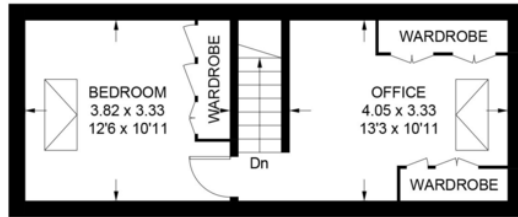




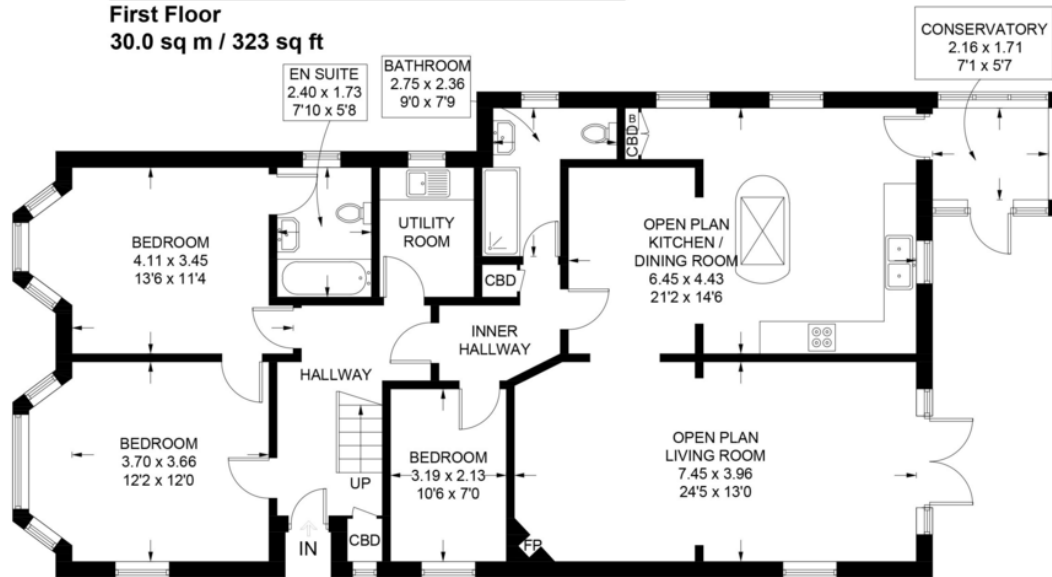
# FLOORPLAN

## Straight Road

Approximate Gross Internal Area = 159.5 sq m / 1717 sq ft



**First Floor**  
30.0 sq m / 323 sq ft



**Ground Floor**  
129.5 sq m / 1394 sq ft

Illustration for identification purposes only,  
measurements are approximate, not to scale.

### DIRECTIONS

### CONTACT

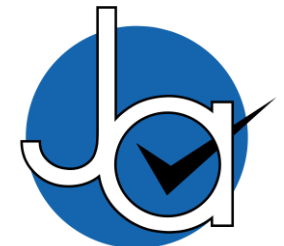
99 London Road  
Stanway  
Colchester  
Essex  
CO3 0NY

E [sales@john-alexander.co.uk](mailto:sales@john-alexander.co.uk)

T 01206 656007

[www.john-alexander.co.uk](http://www.john-alexander.co.uk)

Find us on..



**JOHN ALEXANDER**  
ESTATE AGENTS