



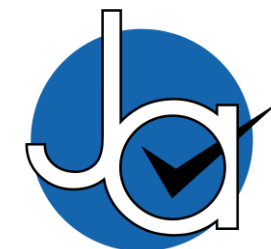
**2 bedroom
Semi-Detached
Bungalow
located in
Great Tey.**

Guide Price
£275,000 - £300,000

Find us on..



JOHN ALEXANDER
ESTATE AGENTS



JOHN ALEXANDER
ESTATE AGENTS

Tambour Close Great Tey Colchester CO6 1BD



2



1



2



EPC

D



FULL DESCRIPTION

OVERVIEW

*** GUIDE PRICE £275,000-£300,000 ***

Located in this cul-de-sac we are delighted to offer this two bedroom semi-detached bungalow benefiting from a driveway to the side leading to a garage with electric roller door.

ENTRANCE HALL

Radiator, storage cupboard and airing cupboard, access to loft.

KITCHEN/BREAKFAST ROOM

12' 4" x 9' 5" (3.76m x 2.87m)

Stainless steel one and a half bowl sink unit with cupboards under, matching base and eye level cupboards, roll top work surfaces, space for washing machine, built in double oven, hob and extractor fan, integrated fridge, breakfast bar, freestanding oil boiler, radiator, double glazed windows to side and rear, double glazed door to garden.

LOUNGE

17' 9" x 10' 9" (5.41m x 3.28m)

Double glazed window to rear, two radiators, living flame effect fire.

SHOWER ROOM

Tiled shower, low level WC, wash basin, chrome heated tail rail, extractor fan, obscure double glazed window to side.

BEDROOM ONE

14' 10" x 8' 11" (4.52m x 2.72m)

Double glazed window to front, radiator, fitted wardrobes.

BEDROOM TWO

11' 4" x 7' 6" (3.45m x 2.29m)

Double glazed window to front and side, radiator, fitted wardrobes.

CONSERVATORY

Double glazed windows, french doors to garden, radiator.

OUTSIDE

Driveway to side leading to garage with electric roller door.

Side access to rear garden which is laid to lawn, patio area, shed, oil tank.



FLOORPLAN

Tambour Close

Approximate Gross Internal Area = 70.1 sq m / 754 sq ft

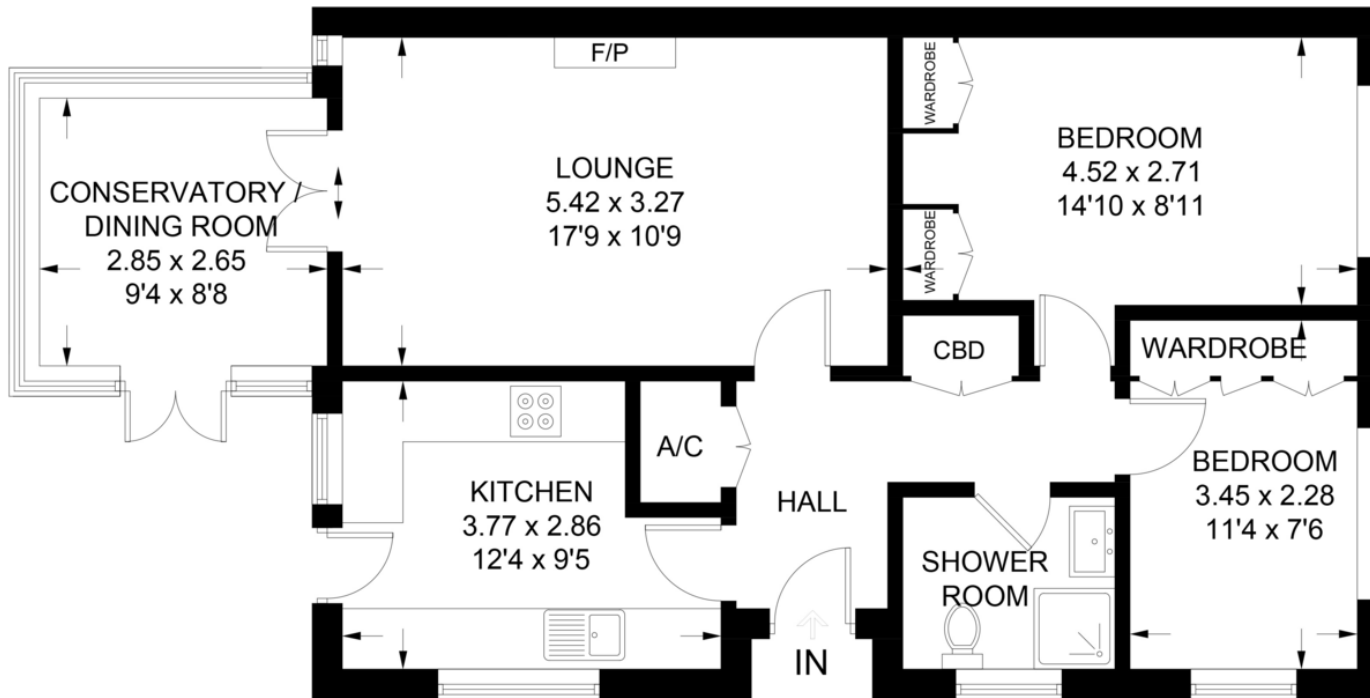


Illustration for identification purposes only,
measurements are approximate, not to scale.

CONTACT
London Road
Stanway
Colchester
Essex
CO3 0NY

E info@john-alexander.co.uk

T 01206 656007

www.john-alexander.co.uk

Find us on..



JOHN ALEXANDER
ESTATE AGENTS