



2 bedroom Semi-Detached House located in Lawford.

Guide Price
£250,000 - £275,000

Find us on..




JOHN ALEXANDER
ESTATE AGENTS



JOHN ALEXANDER
ESTATE AGENTS

Keating Close Lawford Manningtree CO11 2HF



2



1



0



EPC

TBC



FULL DESCRIPTION

MEASUREMENTS

Living Room / Dining Room

5.23m x 3.73m

Kitchen

3.73m x 2.06m

Landing

Loft access.

Bedroom One

3.7m x 2.64m

Bedroom Two

3.68m x 2.06m

Bathroom

Outside

Garage + Driveway

THE HOME

Entrance and Stairs: Visitors are welcomed by steps leading to a neat front garden and the entrance door. Once inside, stairs sweep up to the first floor, where the two bedrooms and family bathroom await.

Once inside, stairs sweep up to the first floor, where the two bedrooms and family bathroom await.

Living/Dining Room: The living/dining room invites you in, with light flooding through the window. It's the perfect spot for cozy evenings with family. There's also ample space for a dining table, making it an ideal place to entertain friends.

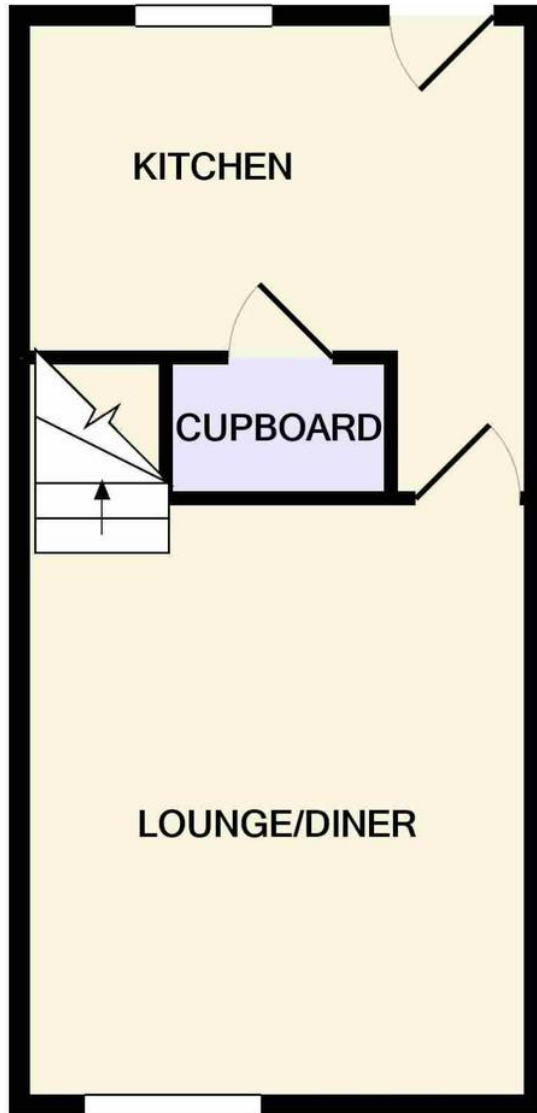
Kitchen: The adjacent kitchen features gentle grey, gloss cabinetry that reflects the natural light streaming in through the window and door. From here, you can enjoy views of the garden at the rear.

Garden: The garden is designed for low maintenance, with lush green lawn and raised beds along one side. If you have "green fingers," this blank canvas awaits your creative touch.

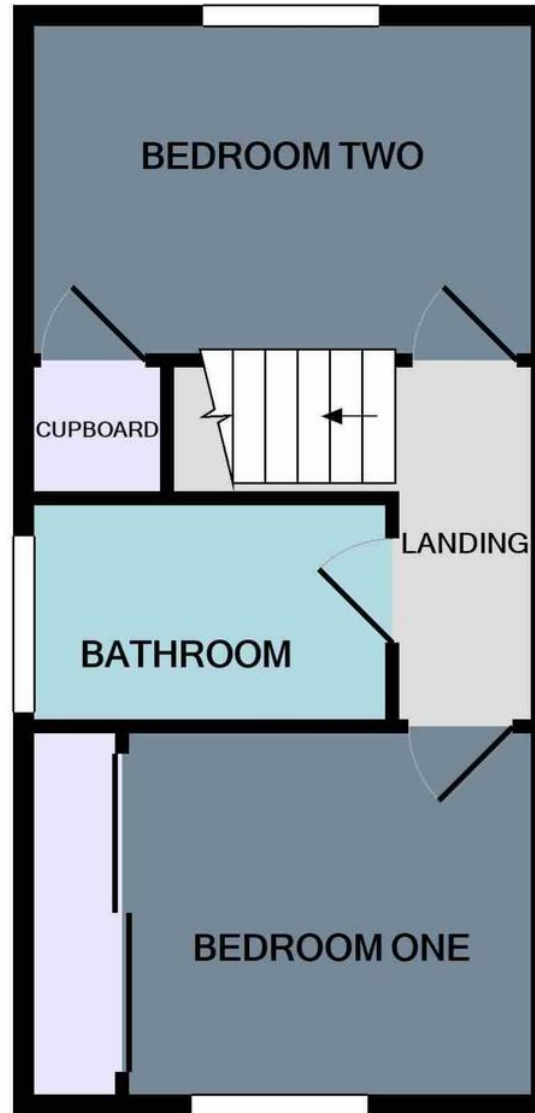
Garage and Off-Road Parking: There's a detached single garage and off-road parking. In summary, this semi-detached house offers premium living in the heart of sought-after Lawford, combining comfort, style, and practicality.



FLOORPLAN



GROUND FLOOR



1ST FLOOR

Measurements are approximate. Not to scale. Illustrative purposes only

DIRECTIONS

CONTACT

99 London Road
Stanway
Colchester
Essex
CO3 0NY

E sales@john-alexander.co.uk

T 01206 656007

www.john-alexander.co.uk

Find us on..



JOHN ALEXANDER
ESTATE AGENTS