



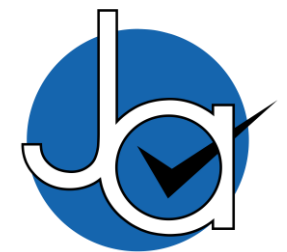
# 3 bedroom Detached House located in Great Horkesley.

Guide Price  
£300,000 - £335,000

Find us on..



JOHN ALEXANDER  
ESTATE AGENTS



JOHN ALEXANDER  
ESTATE AGENTS

# Millers Close Great Horkesley Colchester CO6 4HW



3



1



1



EPC

TBC



## FULL DESCRIPTION

### THE PROPERTY

Great Horkesley is a picturesque village located in the county of Essex, England. Situated just a few miles north of Colchester, it offers a peaceful and friendly atmosphere, making it an ideal place for families and individuals looking for a close-knit community.

Local amenities in Great Horkesley are conveniently available to cater to the needs of its residents. The village boasts a range of shops, including a grocery store, a pharmacy, and a post office, providing essential goods and services. There are also several charming pubs and restaurants where locals can enjoy a meal or catch up with friends.

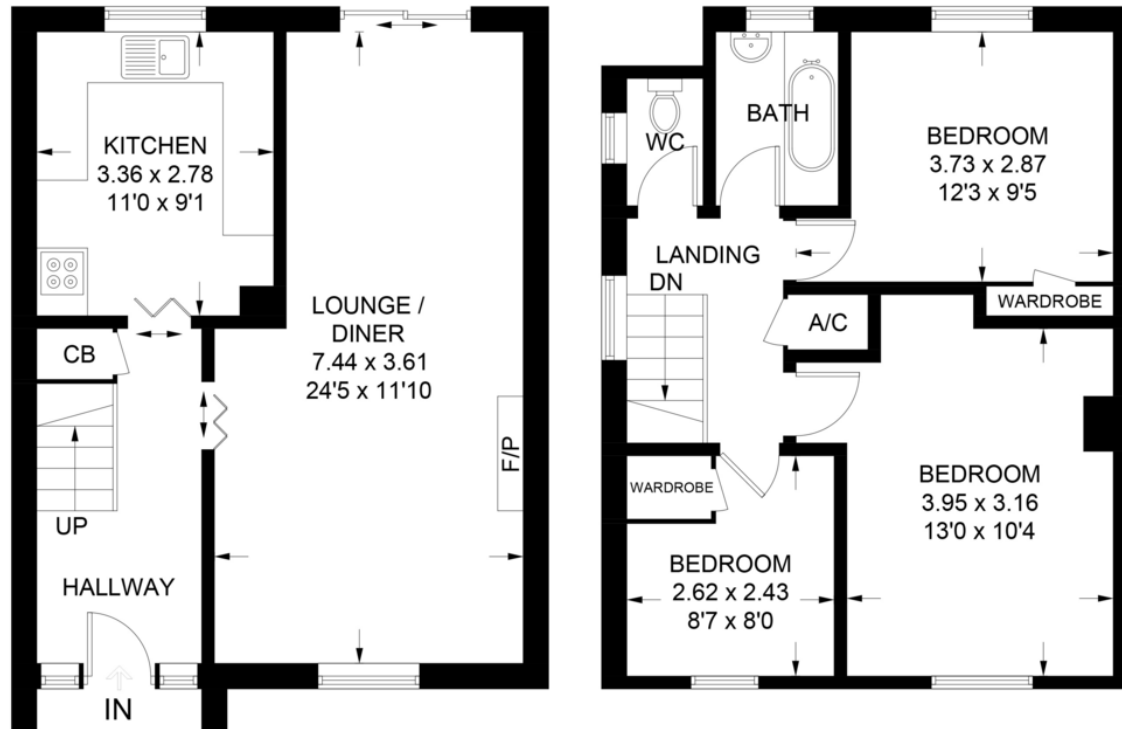
Transportation links in Great Horkesley are convenient for residents who commute or wish to explore the surrounding areas. The village is located just off the A134 road, providing easy access to nearby towns and villages. The A12, one of the major roads in the region, is also within reach, connecting Great Horkesley to both Colchester and Ipswich.



## FLOORPLAN

### Millers Close

Approximate Gross Internal Area = 86.3 sq m / 929 sq ft



**Ground Floor**  
43.2 sq m / 465 sq ft

**First Floor**  
43.1 sq m / 464 sq ft

Illustration for identification purposes only,  
measurements are approximate, not to scale.

## DIRECTIONS

### CONTACT

London Road  
Stanway  
Colchester  
Essex  
CO3 0NY

E [info@john-alexander.co.uk](mailto:info@john-alexander.co.uk)

T 01206 656007

[www.john-alexander.co.uk](http://www.john-alexander.co.uk)

Find us on..



**JOHN ALEXANDER**  
ESTATE AGENTS