



66 Barncroft Drive, Haywards Heath

In Excess of £575,000


Henry Adams
estate agents

66 Barncroft Drive

Built in 2011 by Barratt Homes, Barncroft Drive is ideally located in the sought after development of The Limes, Lindfield with views across communal green and within a short walk of the village High Street.

The bright and airy accommodation briefly comprises; a ground floor WC. A modern kitchen/breakfast room fitted with a range of gloss units and integrated appliances. From the entrance hall doors lead to a spacious, open plan living/dining room, measuring approximately 25' x 15' and with French doors leading to the rear garden.

The first floor comprises; landing with airing cupboard, doors leading to the family white suite bathroom with bath and shower over bath, two double bedrooms both dual aspect with built in wardrobes and single bedroom currently used as a home office. Stairs lead to the second floor which comprises a spacious triple aspect bedroom suite with dressing area, ample storage and an en-suite shower room with shower unit, wash basin, wc and towel rail.

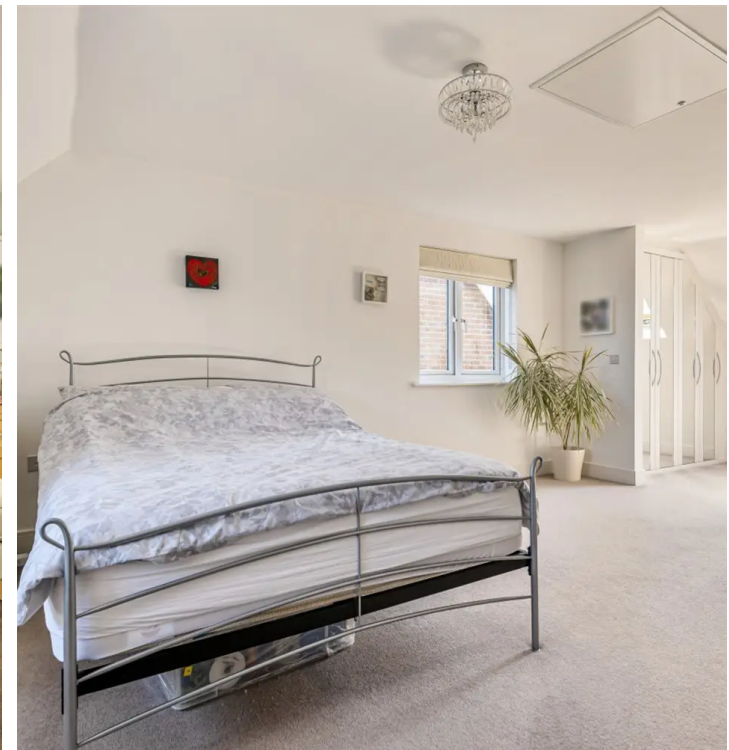
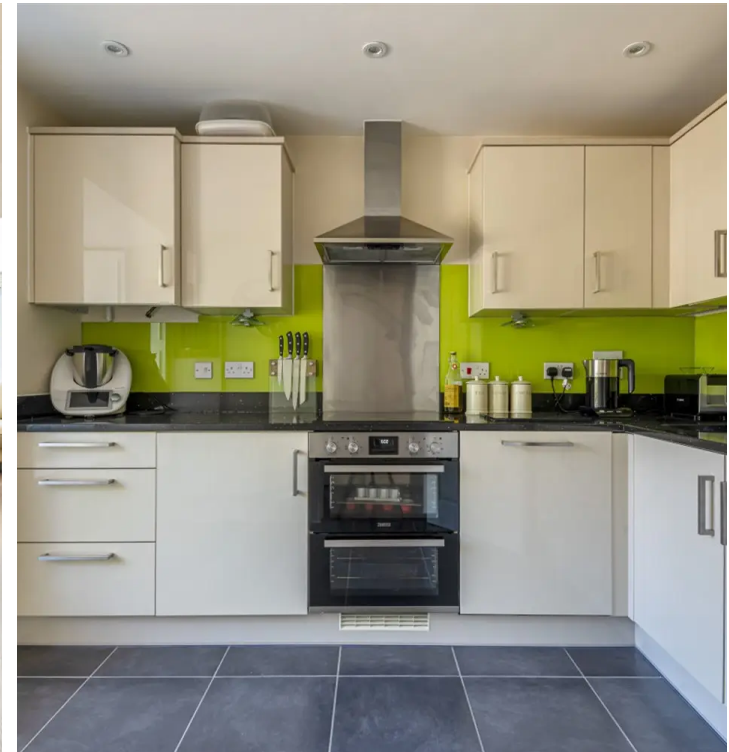
The property is in excellent decorative order, having recently been decorated throughout as well as new carpets to the first and second floors and new Karndean flooring to the living room. Further attributes include gas central heating, double glazing throughout and ready to move into.

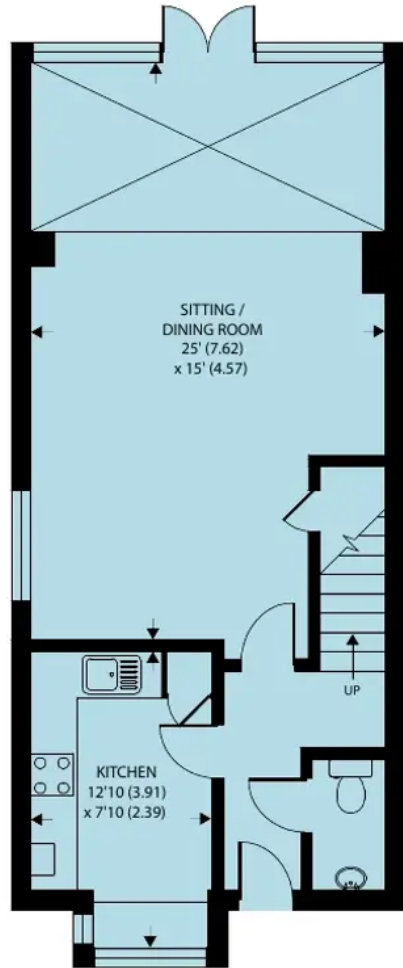
Council Tax band: E

Tenure: Freehold

EPC Energy Efficiency Rating: C

EPC Environmental Impact Rating: C

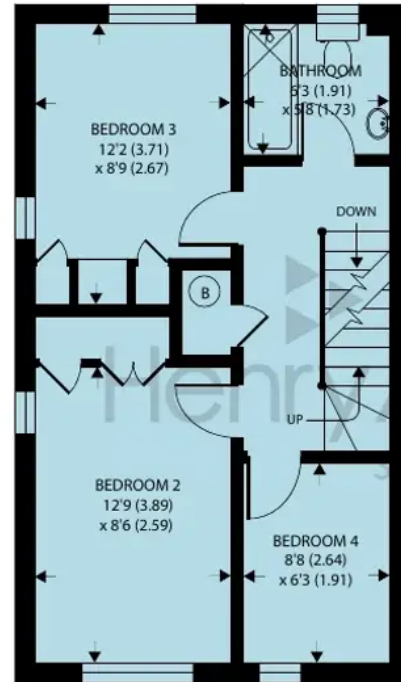




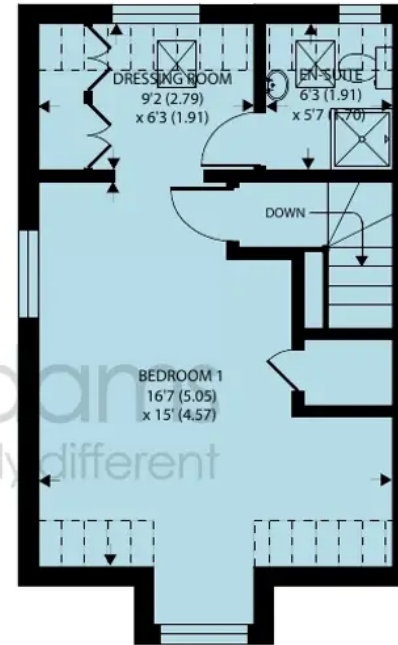
GROUND FLOOR



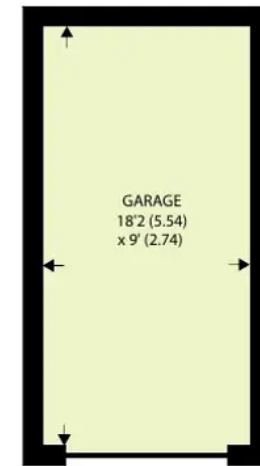
Denotes restricted head height



FIRST FLOOR



SECOND FLOOR



Approximate Area = 1466 sq ft / 136.2 sq m (includes garage)

Limited Use Area(s) = 53 sq ft / 5 sq m

Total = 1519 sq ft / 141.1 sq m

For identification only - Not to scale



Henry Adams - Mid & East Sussex

Henry Adams HRR Ltd, 1 Park Parade, Haywards Heath - RH16 4LX

01444 458380

haywardsheath@henryadams.co.uk

www.henryadams.co.uk/

Agents Note - Our particulars are for guidance only and are intended to give a fair overall summary of the property. They do not form part of any contract or offer, and should not be relied upon as a statement or representation of fact. Measurements, areas and distances are approximate only. Photographs may include lifestyle shots and pictures of local views. No undertaking is given as to the structural condition of the property, or any necessary consents or the operating ability or efficiency of any service, system or appliance. Please ask if you would like further information, especially before you travel to the property.