



Berry Park Road, Plymouth PL9 9AG

£575,000 Freehold EPC-TBC

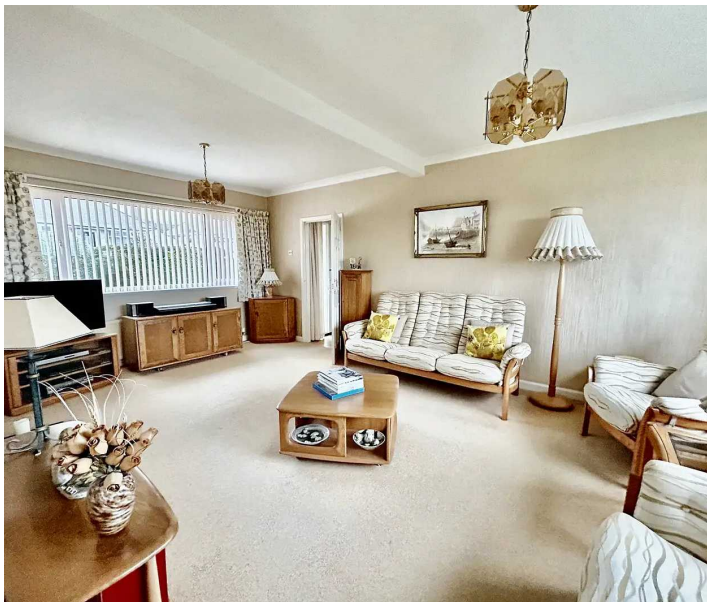


Berry Park Road

Plymouth

Introducing 'Berry House' a one of a kind detached home set on Berry Park Road. This stunning 5-bedroom detached house is situated on a generously sized plot, boasting far-reaching views over Dartmoor and Mount Edgcombe, this property is truly a sight to behold. Ideally located in a desirable area, it is close to great schools and a range of amenities, making it perfect for families.

- Built on a Generously Sized Plot
- Far Reaching Views Over Dartmoor & Mount Edgcombe
- Set in a Desirable Location Close to Great Schools & Amenities
- Extended Separate Annex
- Double Garage
- Full Height Basement with Three Separate Rooms
- Beautifully Landscaped Private Garden
- Immaculately Presented
- Fully Fitted Kitchen



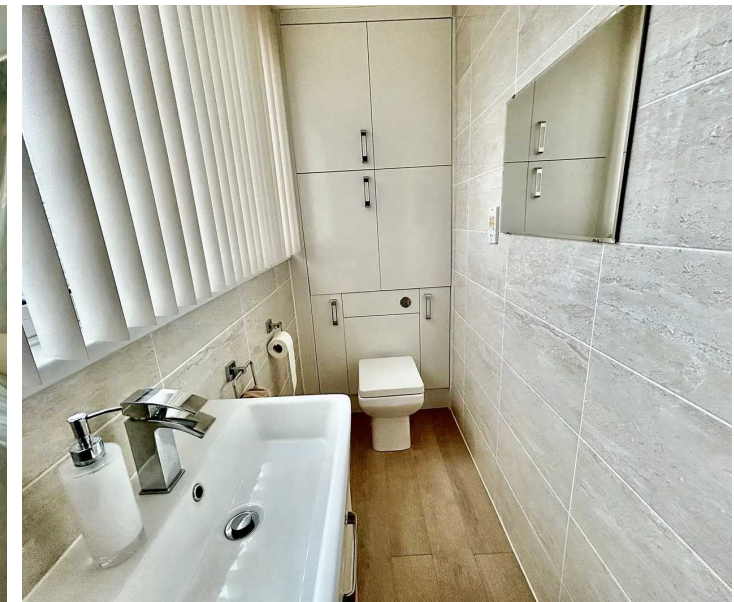
Berry Park Road

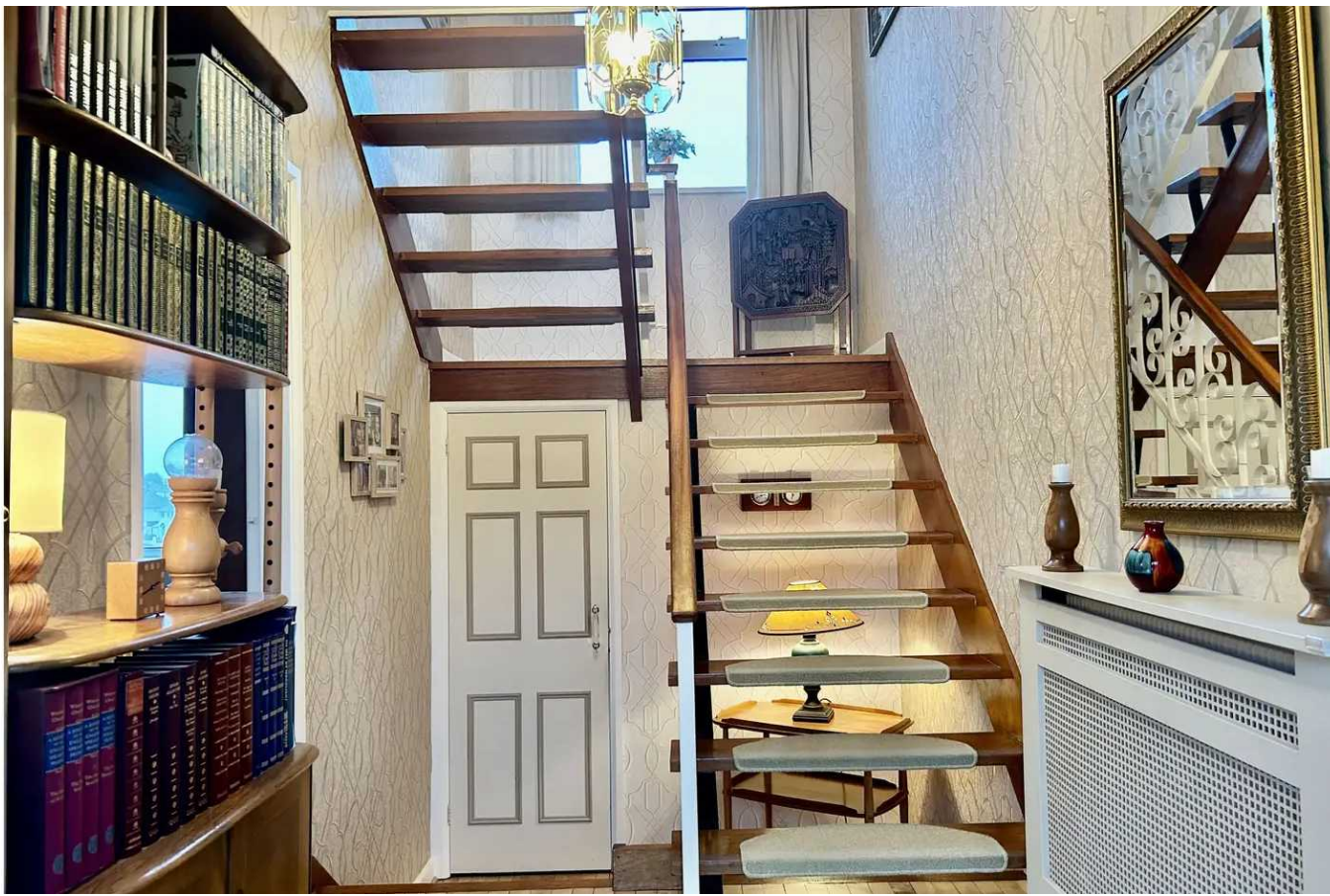
Plymouth

One of the standout features of this property is the separate annexe, which has been thoughtfully extended to provide additional living space. This annexe can be used for various purposes, such as a guest suite, home office, or additional accommodation for family members.

The property also benefits from a double garage, providing ample parking space for multiple vehicles. A full-height basement with three separate rooms offers even more flexibility for potential buyers. Whether you need a Utility, home office, or simply additional storage space, this basement has it all.

The beautifully landscaped private garden is a true oasis, with carefully manicured lawns and a variety of mature trees, this outdoor space is perfect for entertaining guests or enjoying peaceful evenings with the family. The garden also features a paved patio area, ideal for al fresco dining or relaxing in the sun. Also hosting a summer house to relax and take shade from the sun.





Inside the house, you will find an immaculately presented interior, showcasing the quality finishes throughout. The fully fitted kitchen is equipped with appliances and ample storage, making it a pleasure to cook in. Upstairs you will find a library room, perfect for unwinding with a good book or using as a home office.

The main bedroom suite exudes class of all forms with dual aspect views across Dartmoor and Mount Edgumbe, built-in wardrobes and hidden en-suite shower room. It really is a relaxation haven. The other three bedrooms on this level, ooze natural light and offer ample space for beds and further bedroom furniture.

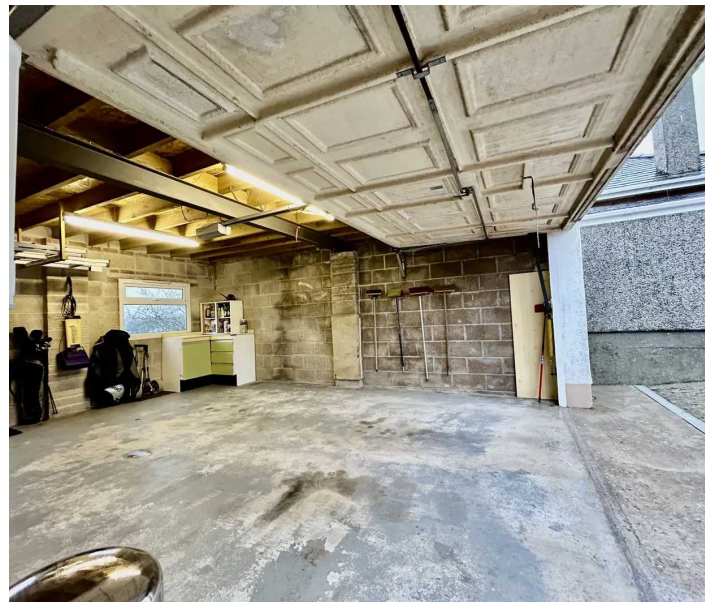
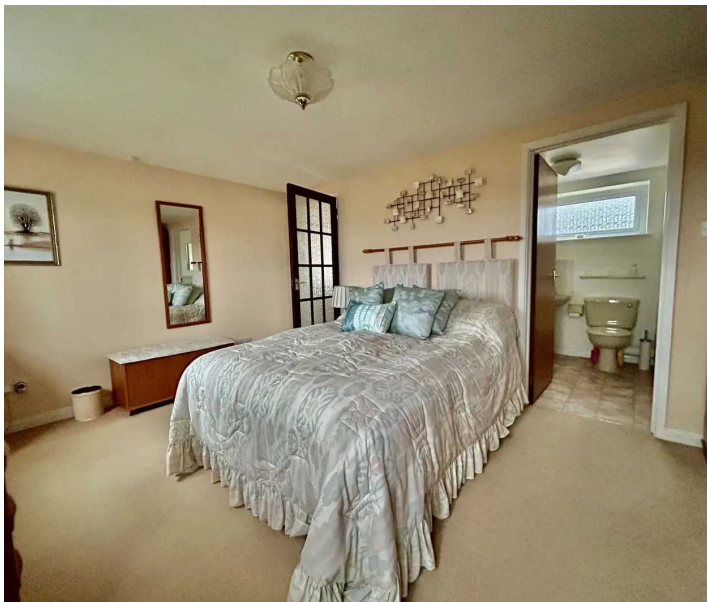
If you are searching for a family home with ample outside space, this is the one for you. With its stunning views, immaculate interior, and extensive outdoor area, this property offers the perfect blend of comfort, convenience, and natural beauty. Don't miss out on the chance to make this house your dream home.

Driveway

4 Parking Spaces

Council Tax band: E

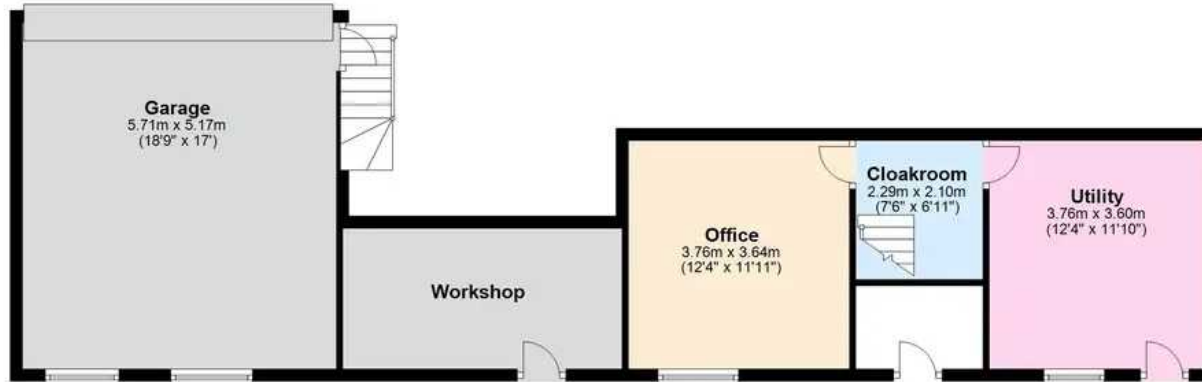
Tenure: Freehold





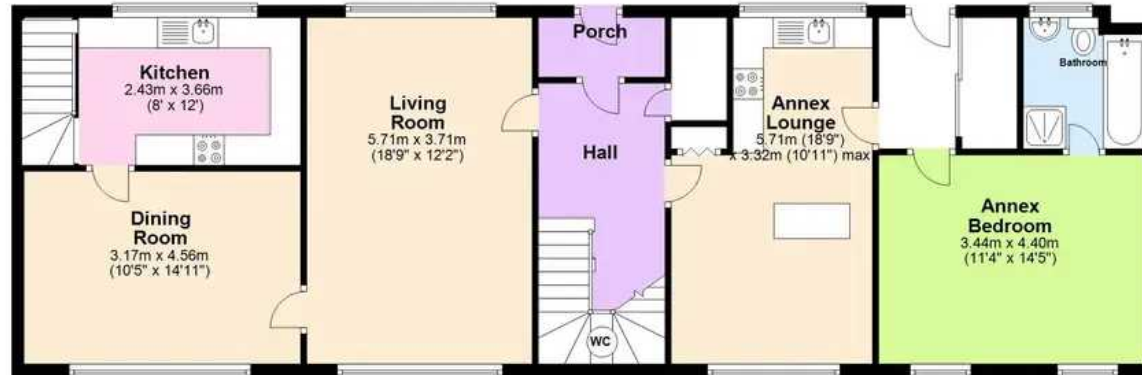
Basement

Approx. 76.6 sq. metres (824.1 sq. feet)



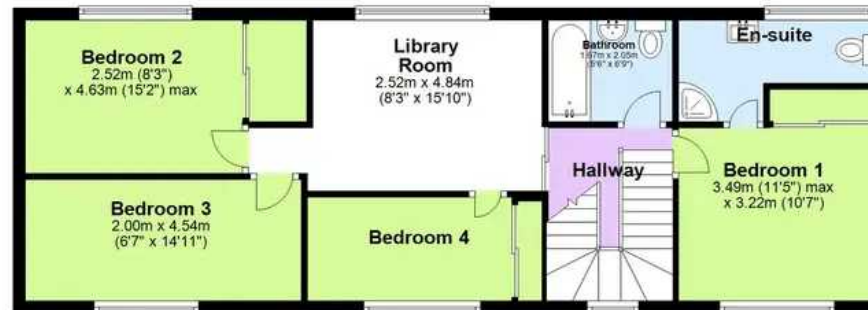
Ground Floor

Approx. 105.2 sq. metres (1131.9 sq. feet)



First Floor

Approx. 63.7 sq. metres (685.8 sq. feet)



Total area: approx. 245.4 sq. metres (2641.8 sq. feet)



Atwell Martin

Atwell Martin, 65 Southside Street - PL1 2LA

01752 202121

plymouthsales@atwell-martin.co.uk

plymouth.atwellmartin.co.uk/

Atwell Martin Plymouth endeavour to ensure the accuracy of property details produced and displayed. Please note that we have not tested any apparatus, equipment, fixtures, fittings or services and so cannot verify that they are connected, in working order or fit for purpose. It is imperative that the buyer of any property makes such checks, prior to purchase so as to satisfy themselves of the properties suitability for their purchase. .