



**Southfield Avenue, Preston**

Paignton

**£725,000**

ABSOLUTE





## Southfield Avenue

Preston, Paignton

Impressive 6 bed family home spread over 3 floors, boasting a grand entrance, spacious rooms with natural light, large kitchen & dining area, luxurious bathroom with standalone bath & walk-in shower. Rear garden with terrace & solar panels. Double garage. Don't miss out on this remarkable opportunity.

Council Tax band: F

Tenure: Freehold

EPC Energy Efficiency Rating: D

- A substantial sized family home over three floors
- Solar panels
- Double garage
- Six double bedrooms
- Large entrance porch and hallway
- A stunning bathroom with stand alone bath and walk in shower
- Two large reception rooms with bay windows
- Spacious fitted kitchen with built in appliances ample storage and a dining room.
- Tiered garden with patio area and grand steps to the terrace
- Sea views





# Southfield Avenue

Preston, Paignton

Situated in the lower part of Preston, this property on Southfield Avenue is conveniently located for a walk to the beach, or public transport into town.

## Absolute Sales & Lettings

Absolute Sales & Lettings, 27 Hyde Road - TQ4 5BP

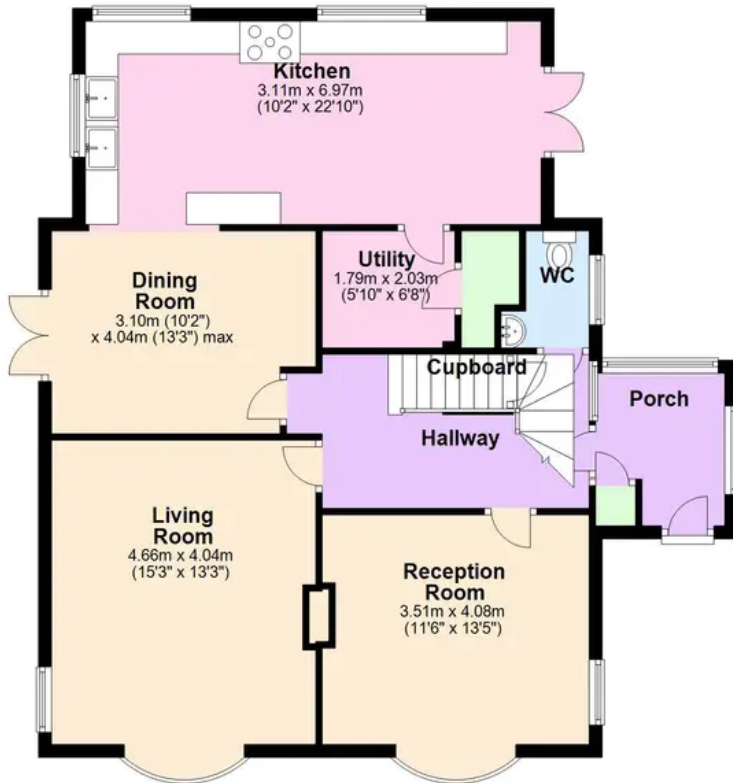
01803 890110

[paignton@movewithabsolute.co.uk](mailto:paignton@movewithabsolute.co.uk)

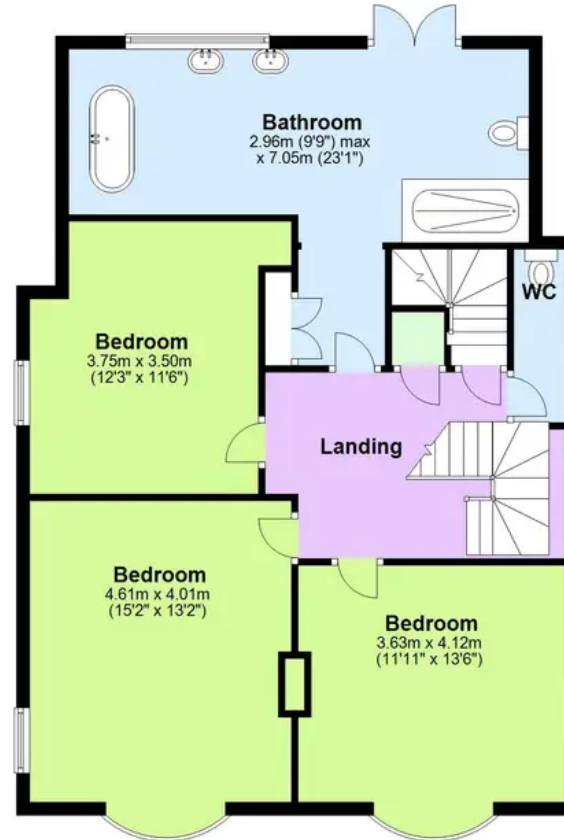
<http://www.movewithabsolute.co.uk>



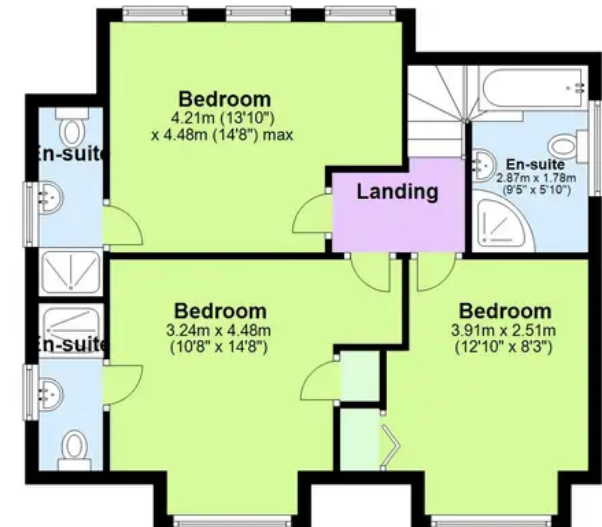
**Ground Floor**  
Approx. 92.3 sq. metres (993.9 sq. feet)



**First Floor**  
Approx. 89.8 sq. metres (966.9 sq. feet)



**Second Floor**  
Approx. 59.5 sq. metres (640.1 sq. feet)



Total area: approx. 241.6 sq. metres (2600.9 sq. feet)

Approx.  
Plan produced using PlanUp.