



ST MARTIN'S LE GRAND



ST PAUL'S



Up to
45,350 sq
ft

of contemporary workspace for tomorrow's world.

Completing Q2 2024



View of the reception



Steeped
in
History



Work in an
architectural icon

A historic façade interwoven with next-generation workspace



16 St Martin's Le Grand boasts a fascinating history, from 1925 it served as the headquarters, showroom and dispatch depot for the burgeoning Courtauld family textile business, later to become the world's largest. This iconic building gives a fascinating insight into the City's history as a powerful centre of commerce, and its elegant period features set the perfect backdrop to this newly refined, contemporary workspace opportunity.



Local Area

Restaurants, Cafés and Bars

Hotels

Fitness & Green Spaces

Culture

1. Pret A Manger
2. Millie's Lounge
3. Cabotte
4. Hawksmoor Guildhall
5. Coq D'Argent
6. Barbie Green
7. Pret A Manger
8. Burger and Lobster
9. Black Sheep Coffee
10. Gordon Ramsay Street Burgers
11. Bom Pecado
12. Manicomio
13. Rucolletta
14. Ivy Asia St Paul's
15. Sea Horse Fleet Street
16. Coco di Mama
17. Wren Coffee
18. Dion Bar and Restaurant
19. Mangio Pasta & Bottega
20. Sabien Rooftop Bar



Restaurants, Cafés, Bars

Hotels

Fitness & Green Spaces

Culture

1. Threadneedles, Autograph Collection
2. The Counting House
3. Montcalm
4. South Place Hotel
5. Apex London Wall
6. The Ned
7. Vintry and Mercer
8. The Westin London City
9. Leonardo Royal London
10. Malmaison
11. Lost Property, St Paul's
12. Club Quarters Hotel
13. The Zetter Townhouse
14. Hyatt Regency London Blackfriars



Restaurants, Cafés, Bars

Hotels

Fitness & Green Spaces

Culture

1. Guildhall Art Gallery
2. Roman Wall
3. Barbican Centre
4. Shakespeare's Globe
5. St Paul's Cathedral
6. Tate Modern
7. Carter Lane Gallery
8. Southbank Centre
9. Dr Johnson's House
10. The Ingram Collection





Postman's Park

Relax and unwind

Abundant Green Spaces all within a short walk



Greenhouse,
The Barbican





St Alphege Garden



Festival Gardens



The Barbican

Culture on
your doorstep

A remarkable location immersed in culture



Guildhall Art Gallery

Enjoy the hustle & bustle of The City

Surrounded by diverse opportunities for food & drink



Ivy Asia



Club Gascon



The Rising Sun



Barbie Green



Discover
the
Details

- 7 BERDEK
- 6 LOGI MEDIA
- 5 BECKER GROUP
- 4 LINDGREN INC.
- 3 GLOBEC CORPORATION
- 2 HOOLI
- 1 INITECH
- 0 SOYLENT
- 1 GYM
- 2 OCCUPIER FACILITIES

View of the reception





View of the main entrance facing St Paul's



View of the rear Foster Lane entrance

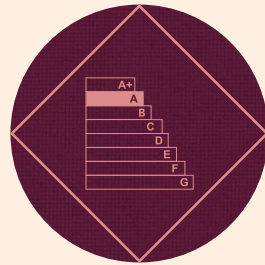
Summary Specification



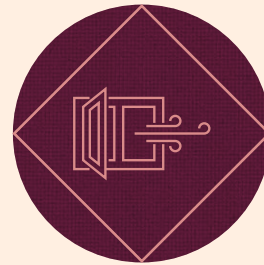
BREEAM
Excellent



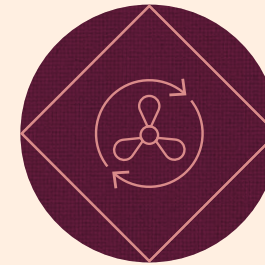
WIRESCORE
Platinum



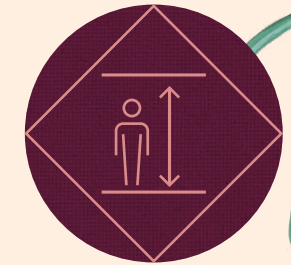
EPC A



Openable
windows



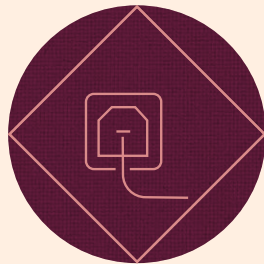
High efficiency VRF heat
pump system for heating
and cooling



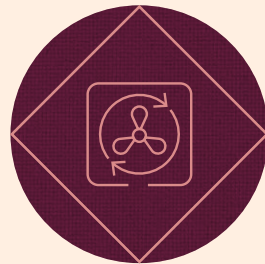
3040–3680mm Floor
to Ceiling Height



High efficiency LED
lighting with occupancy
controls throughout



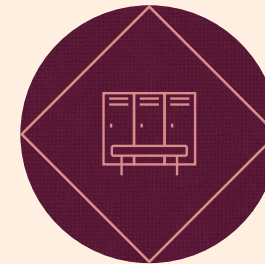
100% Electric
Building



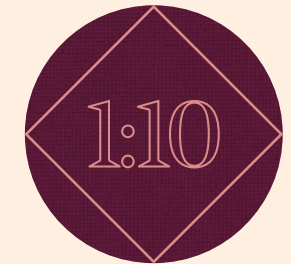
Low energy central fresh
air distribution system
with demand control



Circular economy
measures



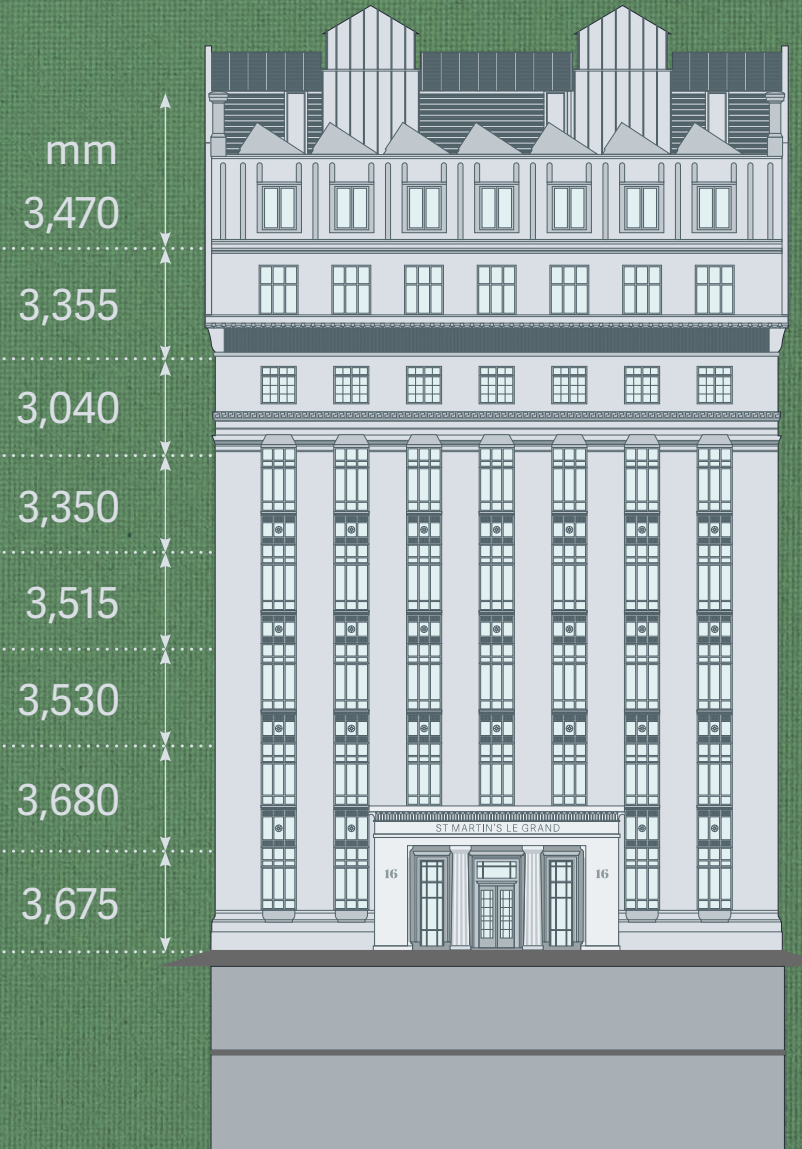
9 showers, 103 lockers
and 81 cycle spaces with
Brompton lockers



1:10
Occupational
density

The Building

	sq. ft m ²
7th Floor	4,887 454
6th Floor	5,544 515
5th Floor	6,150 571
4th Floor	5,691 529
3rd Floor	6,103 567
2nd Floor	6,125 569
1st Floor	6,114 568
Ground Floor	4,736 440
Total	45,350 4,213



Seventh Floor

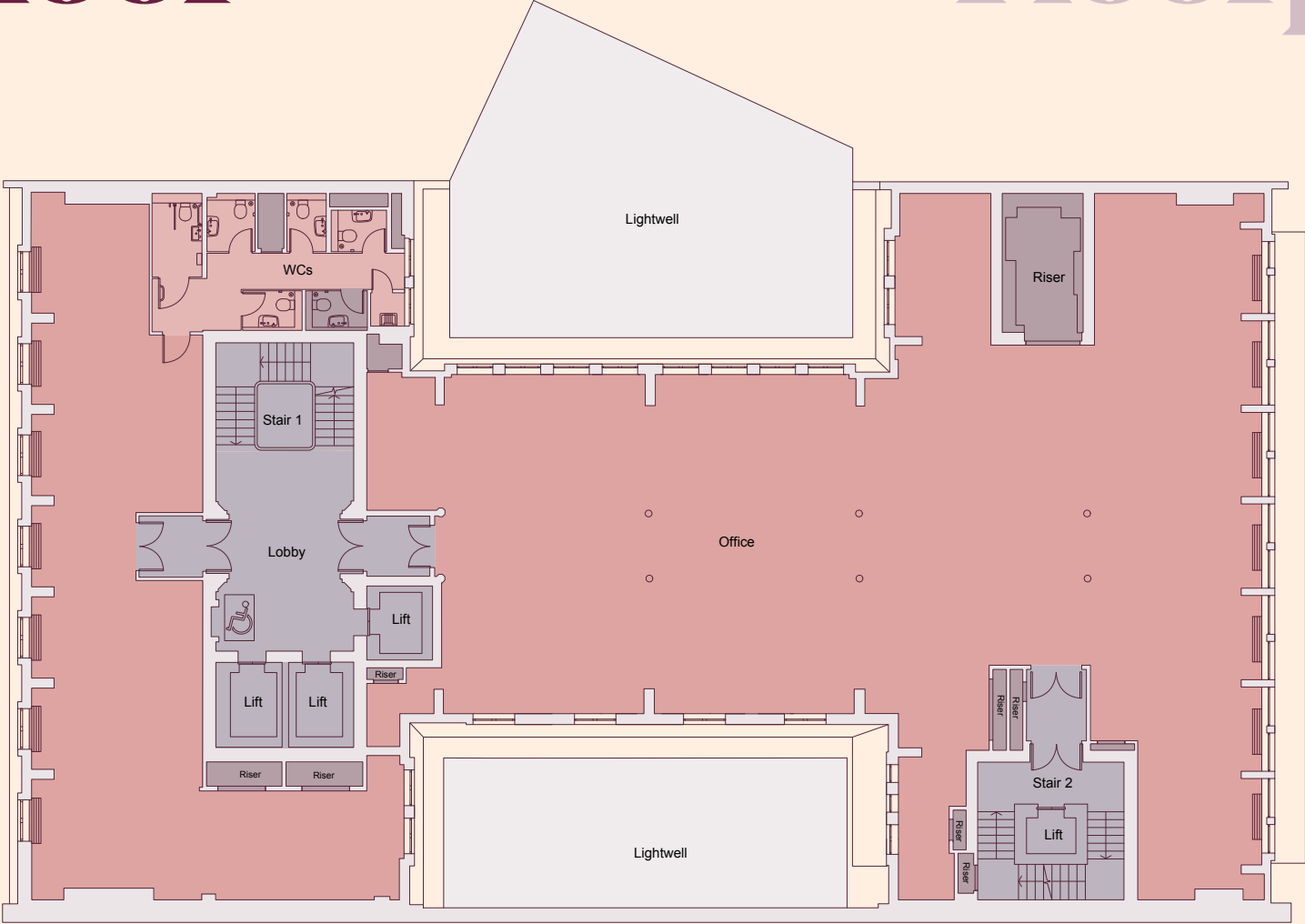
Floorplan

4,887 sq. ft
454 m²

- Available
- W
- Landlord Demise
- Core

ST MARTIN'S LE GRAND

FOSTER LANE





View of the 7th Floor

Sixth Floor

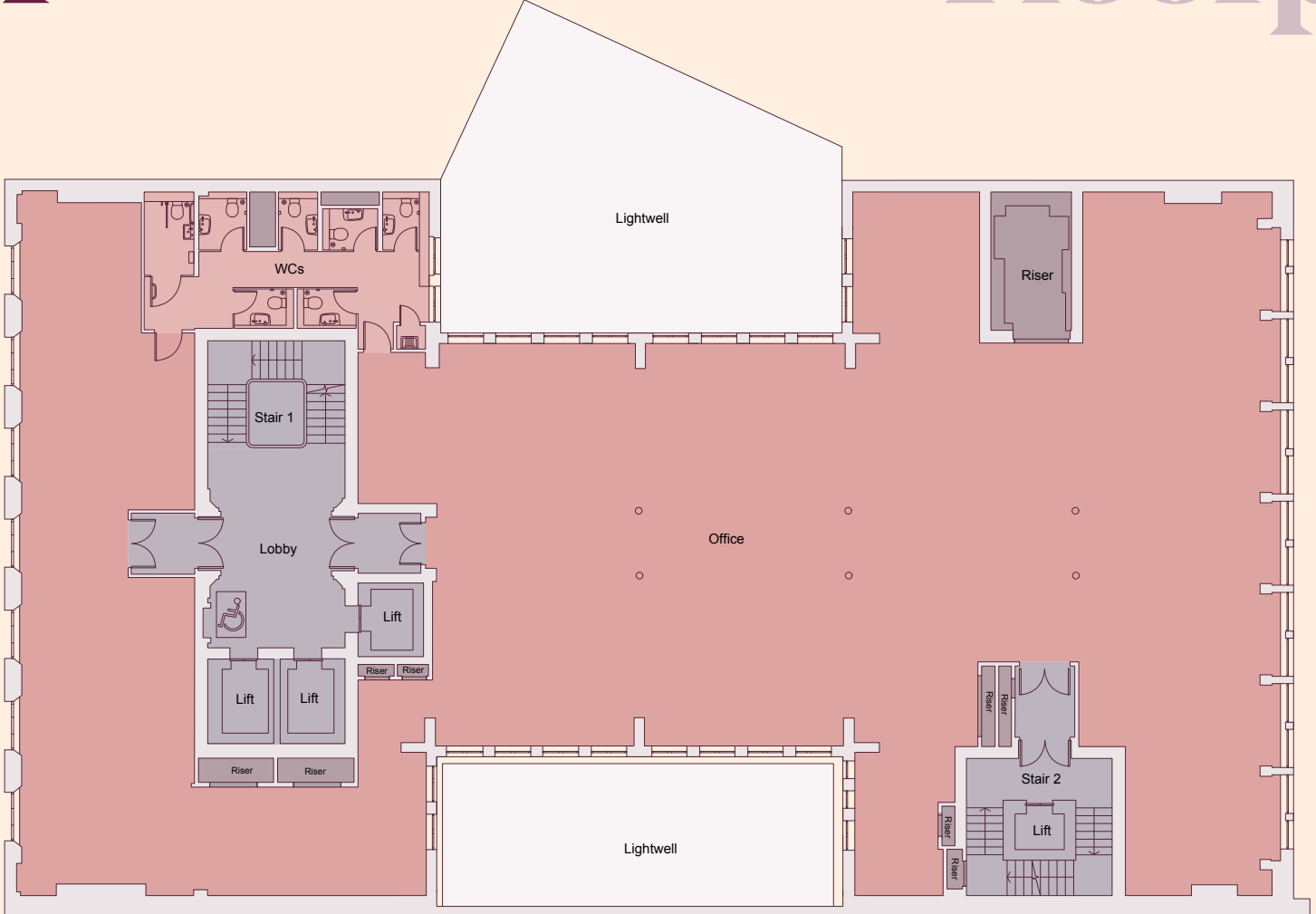
5,544 sq. ft
515 m²

- Available
- WCs
- Landlord Demise
- Core

Floorplan

ST MARTIN'S LE GRAND

FOSTER LANE



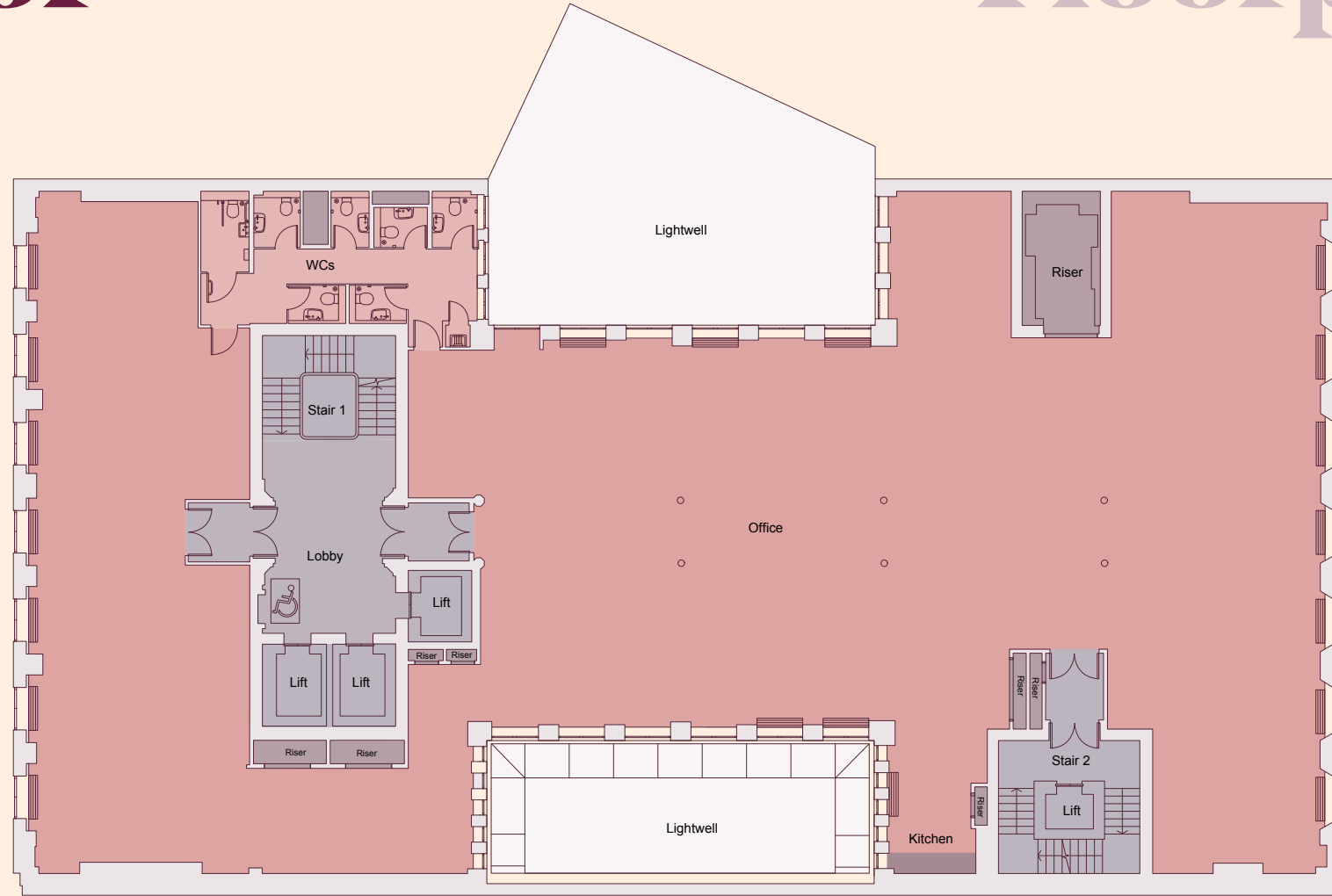
Fifth Floor

6,150 sq. ft
571 m²

- Available
- WCs
- Landlord Demise
- Core



ST MARTIN'S LE GRAND



FOSTER LANE

Floorplan



View of the 5th Floor

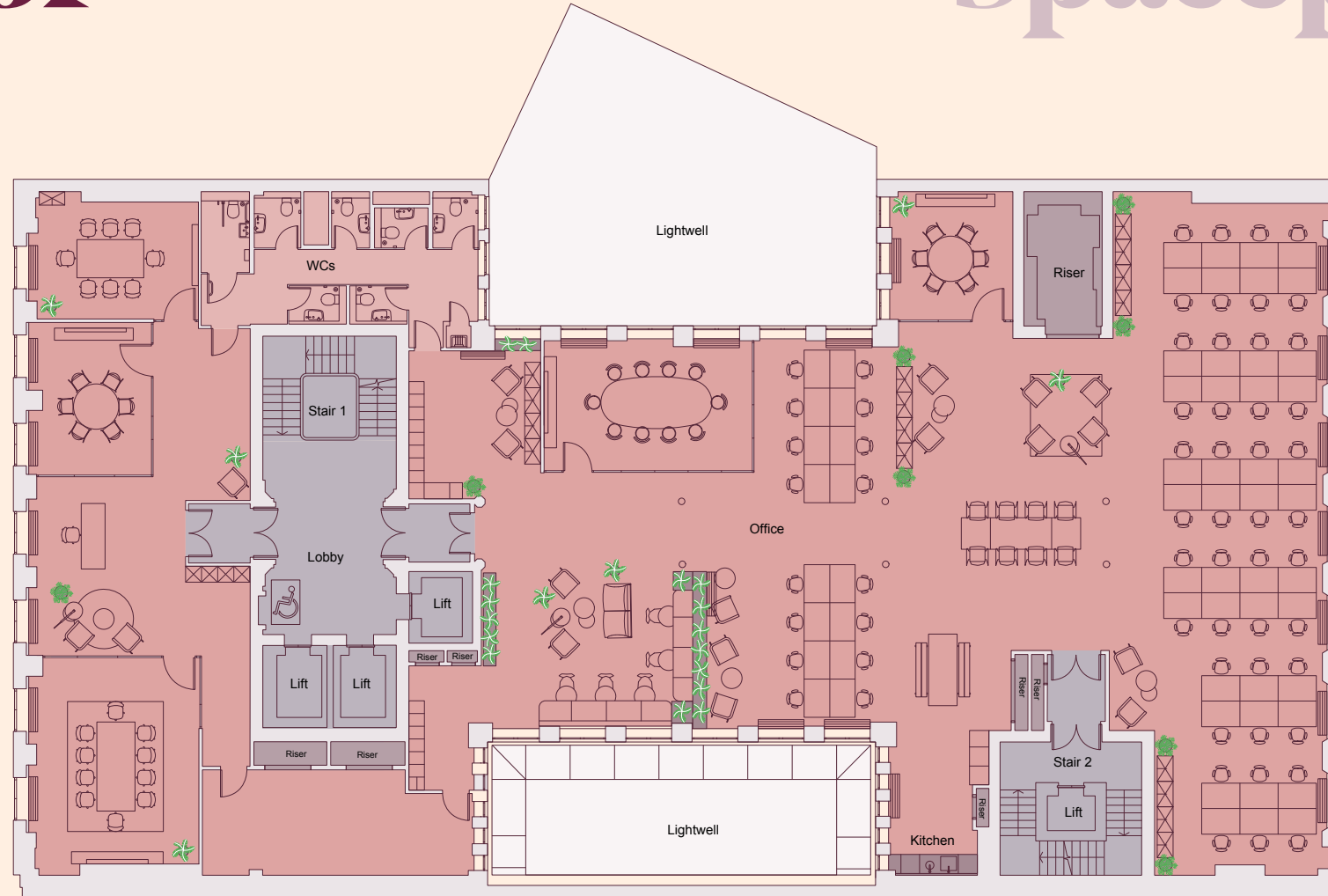
Fifth Floor

Spaceplan

6,150 sq. ft
571 m²

- Available
- WCs
- Landlord Demise
- Core

ST MARTIN'S LE GRAND



FOSTER LANE



View of the 5th Floor

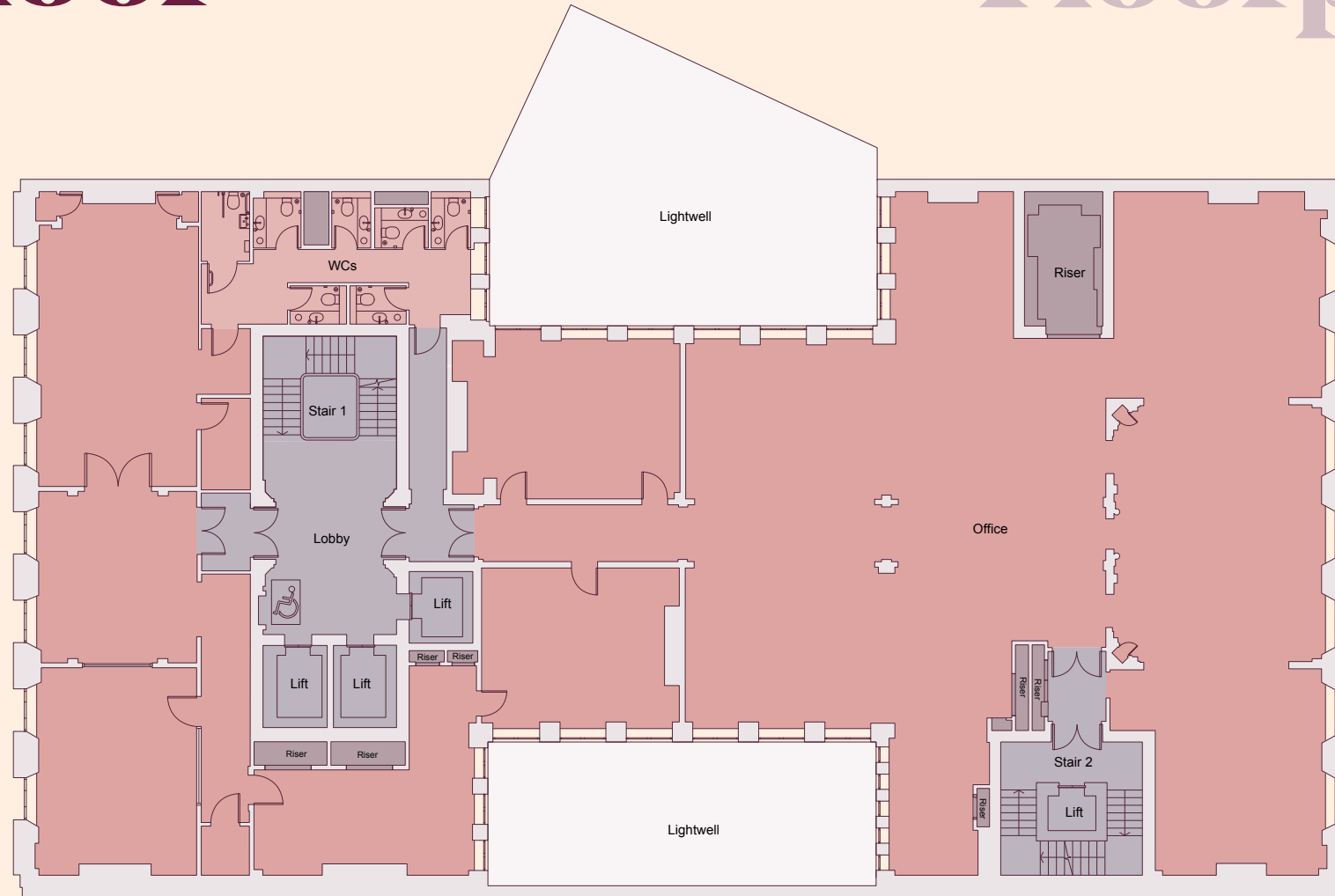
Fourth Floor

Floorplan

5,691 sq. ft
529 m²

- Available
- WCs
- Landlord Demise
- Core

ST MARTIN'S LE GRAND



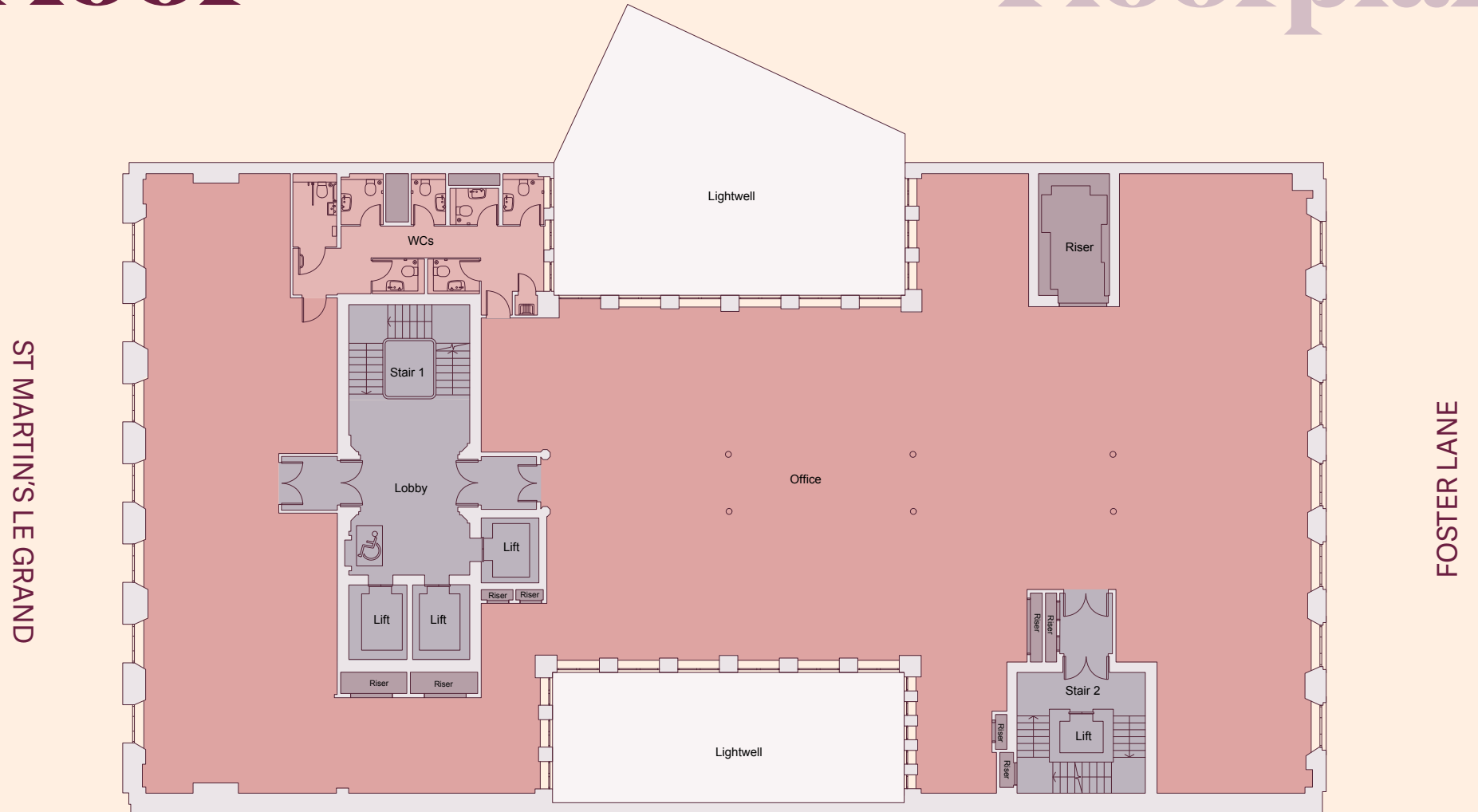
FOSTER LANE

Third Floor

6,103 sq. ft
567 m²

- Available
- WCs
- Landlord Demise
- Core

Floorplan





View of the 3rd Floor

Second Floor

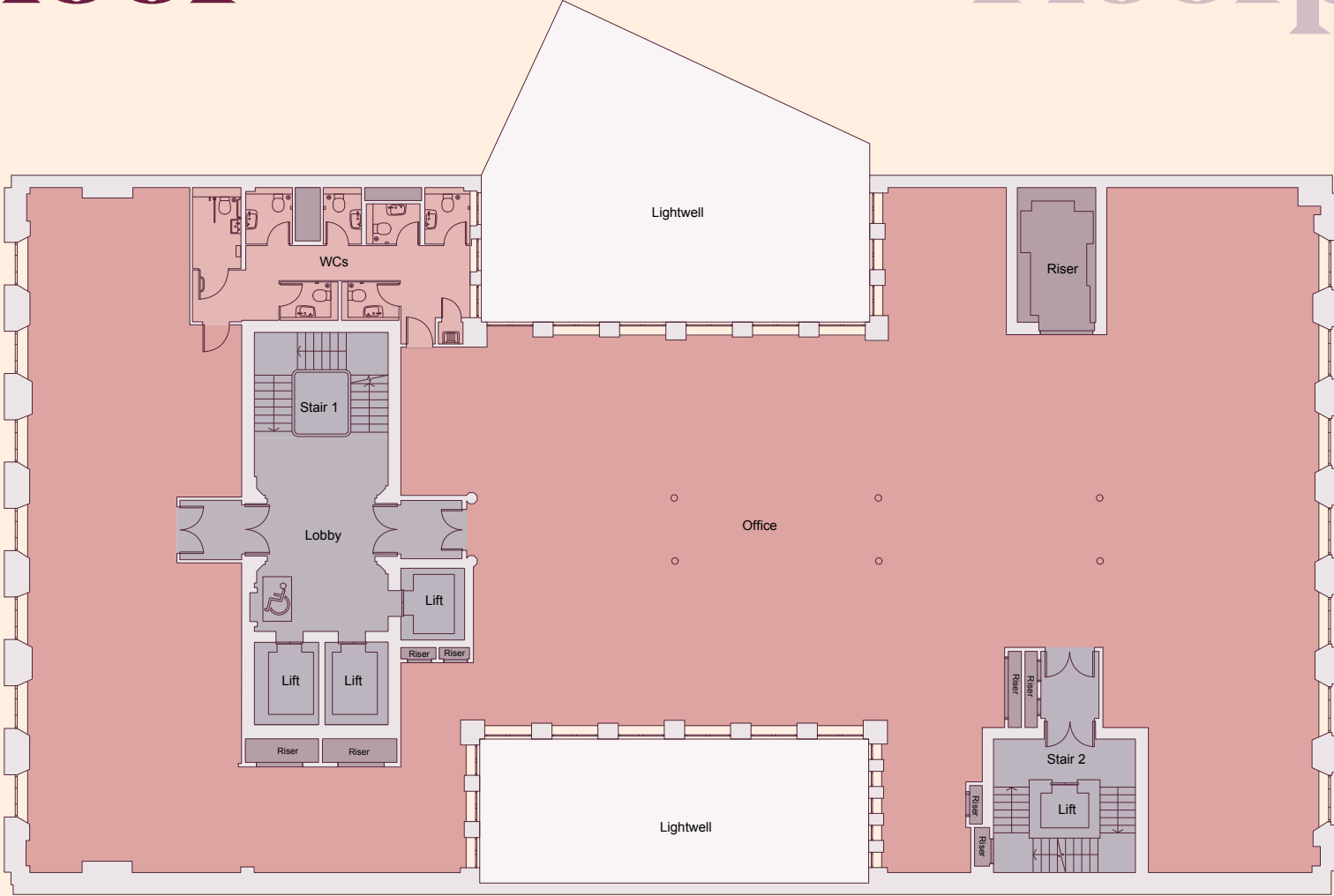
Floorplan

6,125 sq. ft
569 m²

- Available
- WCs
- Landlord Demise
- Core



ST MARTIN'S LE GRAND



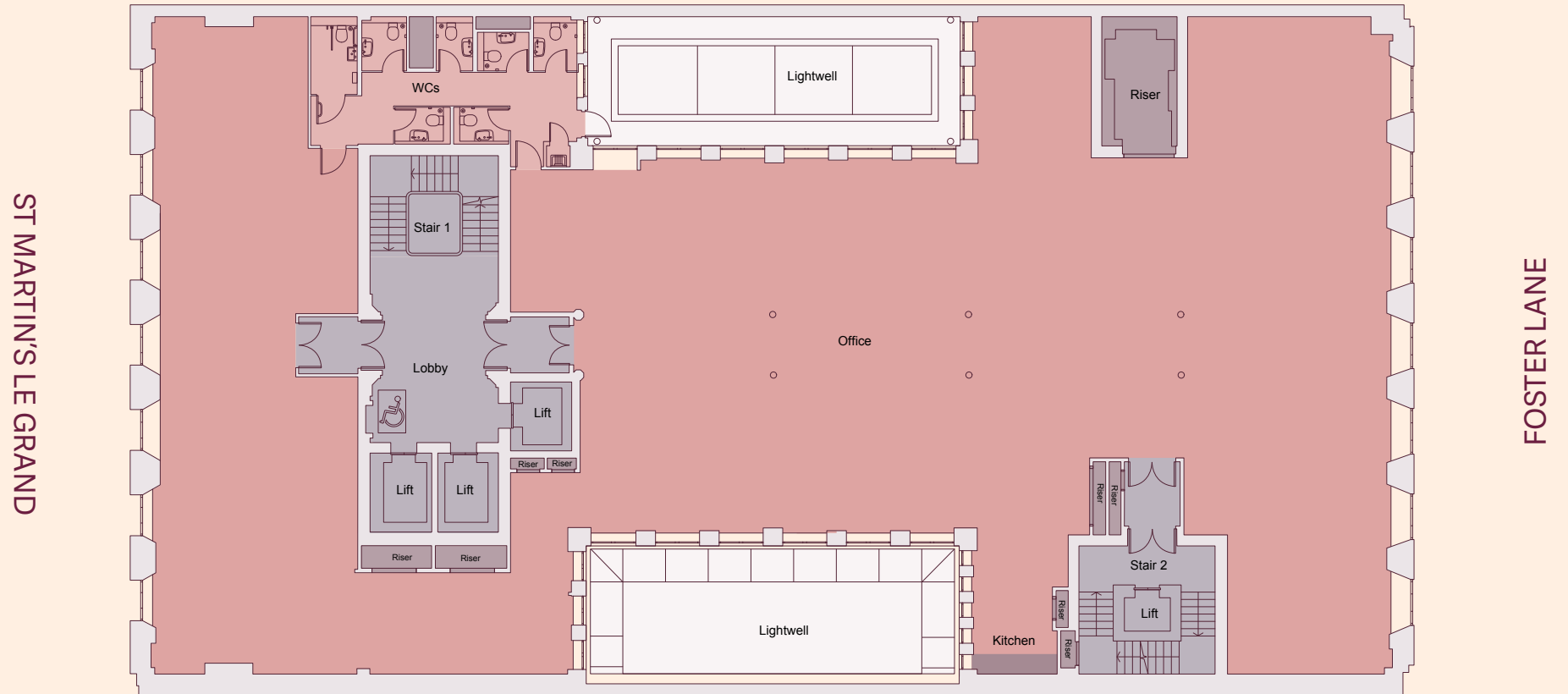
FOSTER LANE

First Floor

6,114 sq. ft
568 m²

- Available
- WCs
- Landlord Demise
- Core

Floorplan



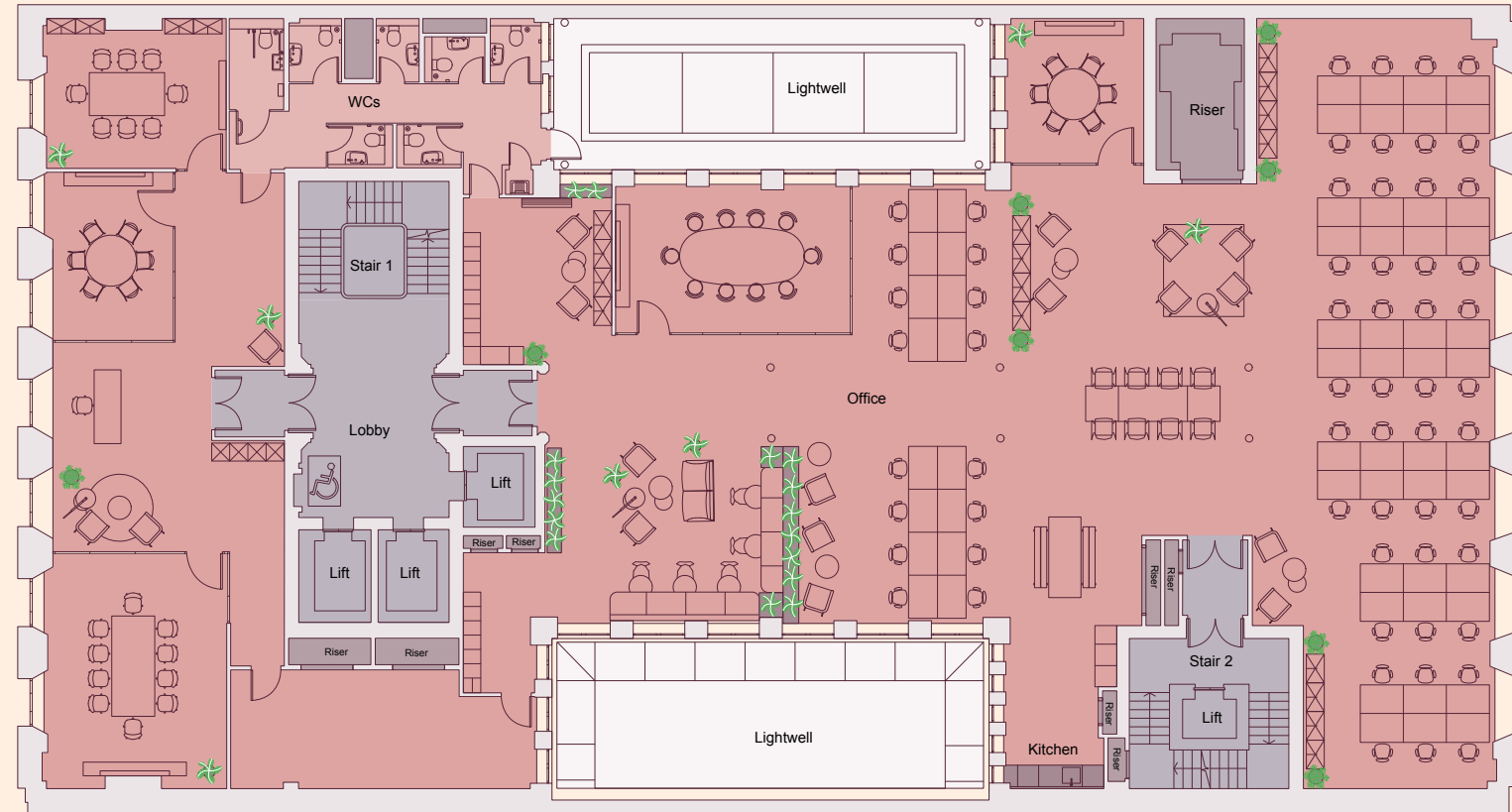
First Floor

Spaceplan

6,114 sq. ft
568 m²

- Available
- WCs
- Landlord Demise
- Core

ST MARTIN'S LE GRAND



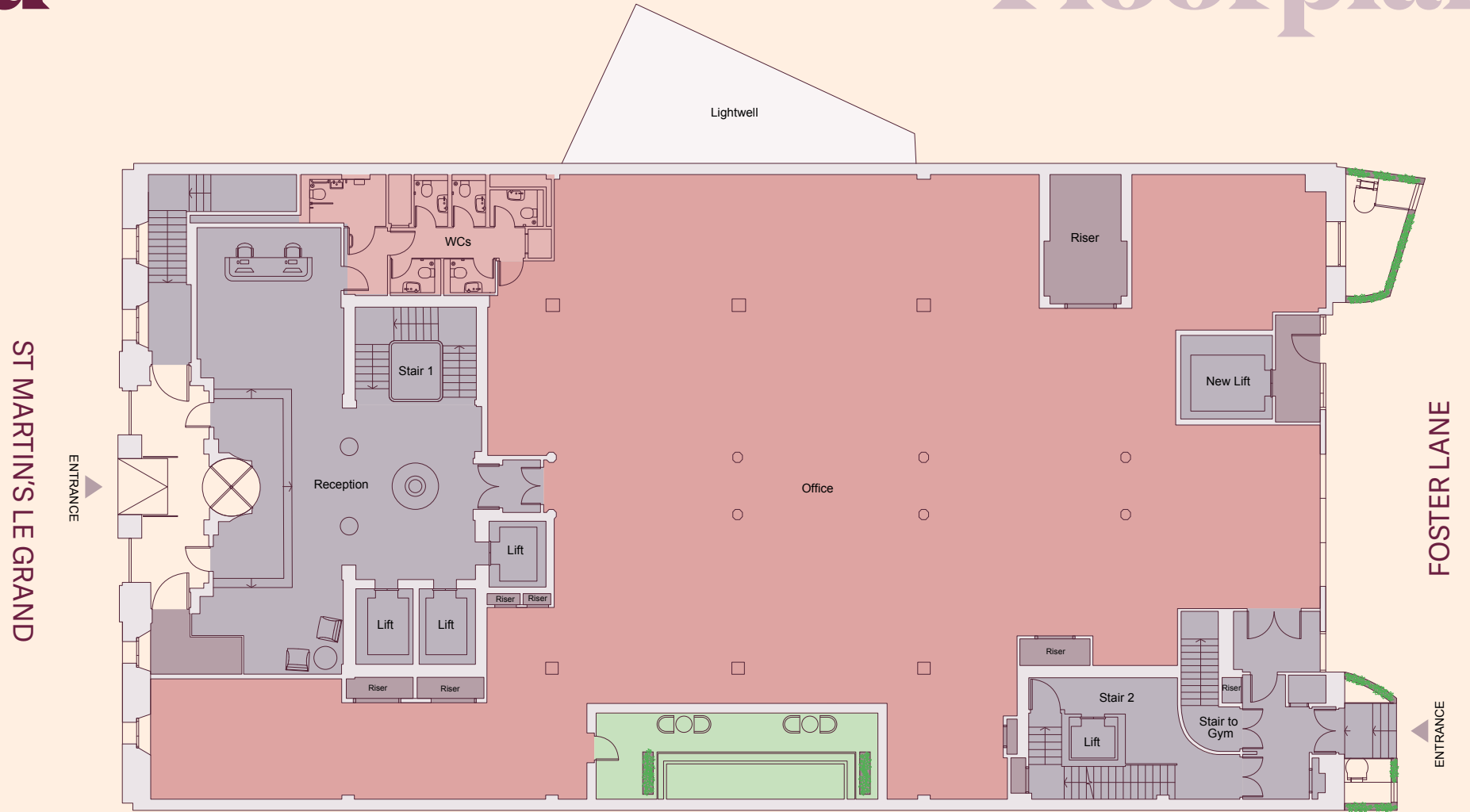
FOSTER LANE

Ground

4,736 sq. ft
440 m²

- Available
- WCs
- Landlord Demise
- Core
- Outdoor Space

Floorplan





View of the Ground Floor

Basement

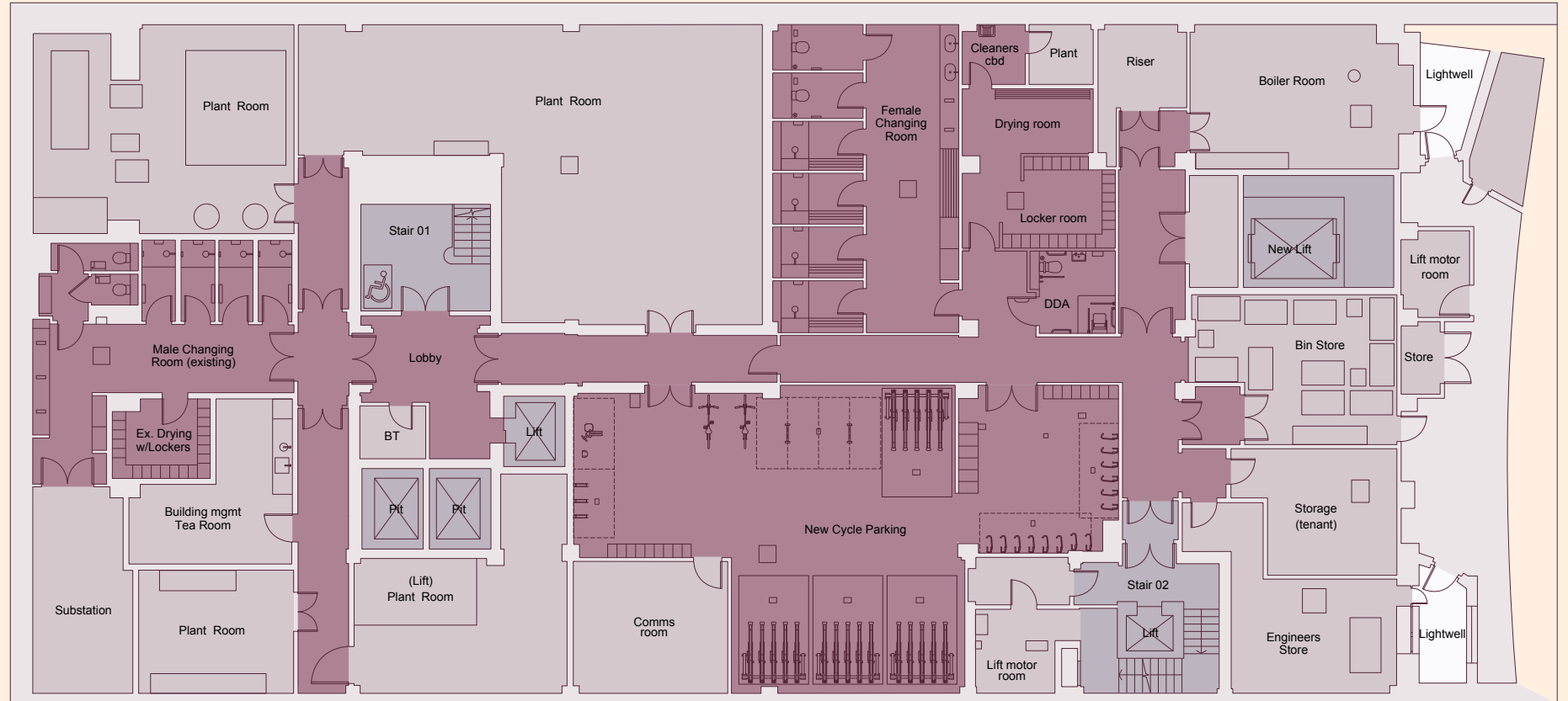
Floorplan

● Tenant Facilities

● Landlord Area

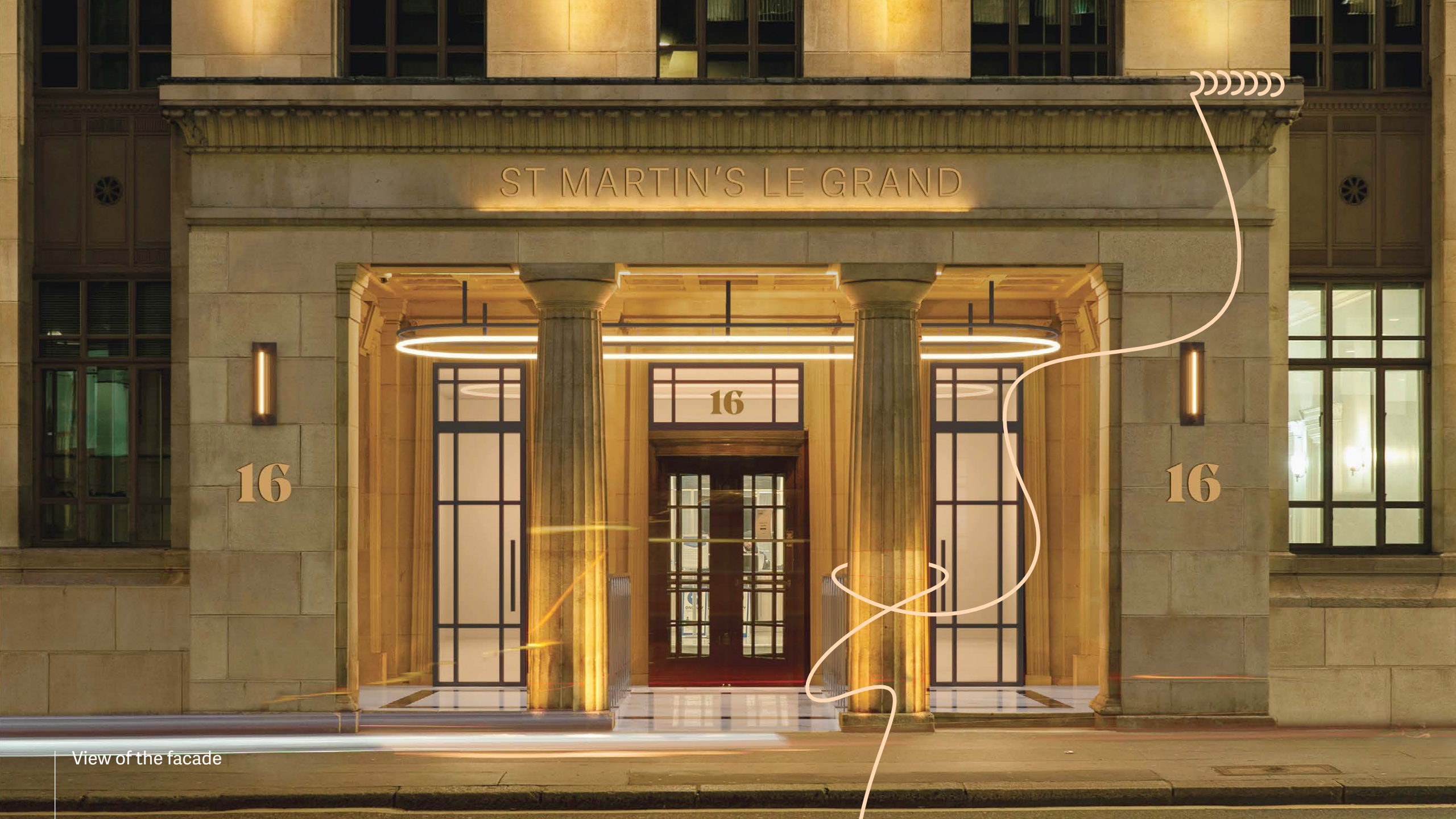
- 9 showers
- 103 lockers
- 81 cycle spaces with Brompton lockers

ST MARTIN'S LE GRAND



FOSTER LANE





ST MARTIN'S LE GRAND

16

16

16

View of the facade

A Development By

**ST
MARTINS**



Rob Macnab

rob.macnab@knightfrank.com
+44 (0)7905 300 160

Harriet Oury

harriet.our@knightfrank.com
+44 (0)7976 730 101

**AVISON
YOUNG**

Jamie Major

jamie.major@avisonyoung.com
+44 (0)7799 341 569

James Walker

james.walker@avisonyoung.com
+44 (0)7957 388 184

Important notice relating to the Misrepresentation Act 1967 and the Property Misdescriptions Act 1991: (i) the particulars are set out as a general outline only for guidance of intending purchasers or lessees and do not constitute, nor constitute part of, an offer or contract (ii) all descriptions, dimensions, references to condition and necessary permission for use and occupation, and other details are given in good faith and are believed to be correct, but any intending purchasers or occupiers should not rely on them as statements or representations of fact, but must satisfy themselves by inspection or otherwise as to the correctness of each of them. Q2 2024.