



Flat 9, Juniper Court Juniper Lane, Flackwell Heath

£325,000



Robertsons

Flat 9

Juniper Court Juniper Lane, High Wycombe

A spacious and well appointed top floor apartment in this small gated development built by Try Homes in 2004. Entrance hall, Sitting room with balcony enjoying views over fields, Kitchen/Breakfast room, Bedroom 1 with en suite bathroom, Second bedroom, Bathroom, Gas central heating, Triple glazing, Car port and additional parking space, Communal gardens.

Tenure: Leasehold

Entrance hall

Radiator, built in storage cupboard, airing cupboard housing Megafluo hot water cylinder and shelved storage, access to loft space, security entryphone, wall thermostat

Sitting room

With double doors to BALCONY, two radiators

Kitchen

Fitted with a range of eye and base level units incorporating stainless steel sink unit with mixer tap and drainer, built in four ring gas hob with extractor over, built in Electrolux oven and oven/grill, built in fridge/freezer, built in Bosch washer/dryer, part tiled walls, down lighters, tiled flooring, radiator, window to rear

Bedroom 1

Radiator, built in double wardrobe, window to front





En suite Bathroom

White suite comprising panelled bath with mixer tap and shower attachment, low level W.C., heated towel rail, part tiled walls, tiled flooring, shaver point, down lighters

Bedroom 2

Radiator, telephone point, window to front

Shower room

Shower cubicle housing fitted shower unit, low level W.C., wash hand basin, heated towel rail, shaver point, part tiled walls, tiled flooring, down lighters

Communal gardens

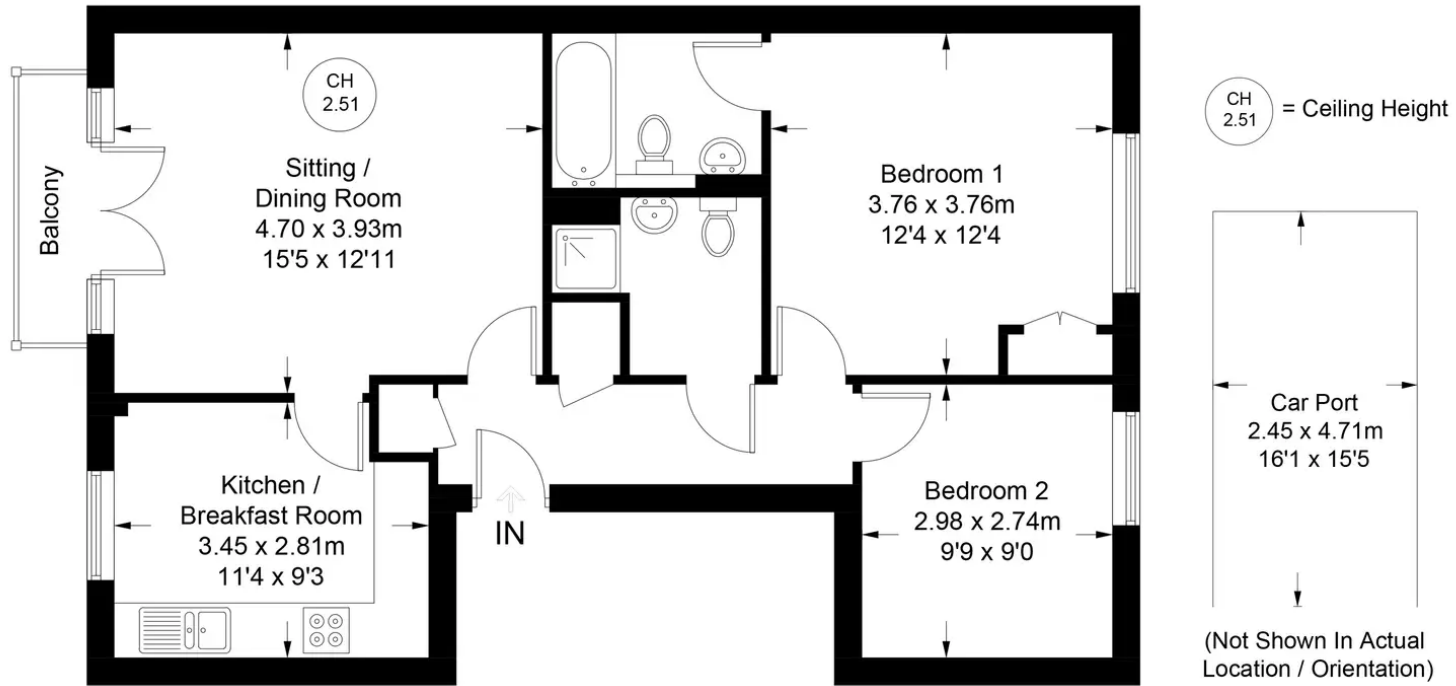
Carport

Parking

There are two allocated parking spaces for the property. One of them is undercover



Approximate Gross Internal Area = 66.3 sq m / 714 sq ft



Third Floor

Floor Plan produced for Robertsons by Media Arcade ©.
Illustration for identification purposes only. Window and door openings are approximate. Whilst every attempt is made to assure accuracy in the preparation of this plan, please check all dimensions, shapes and compass bearings before making any decisions reliant upon them.



Robertsons