



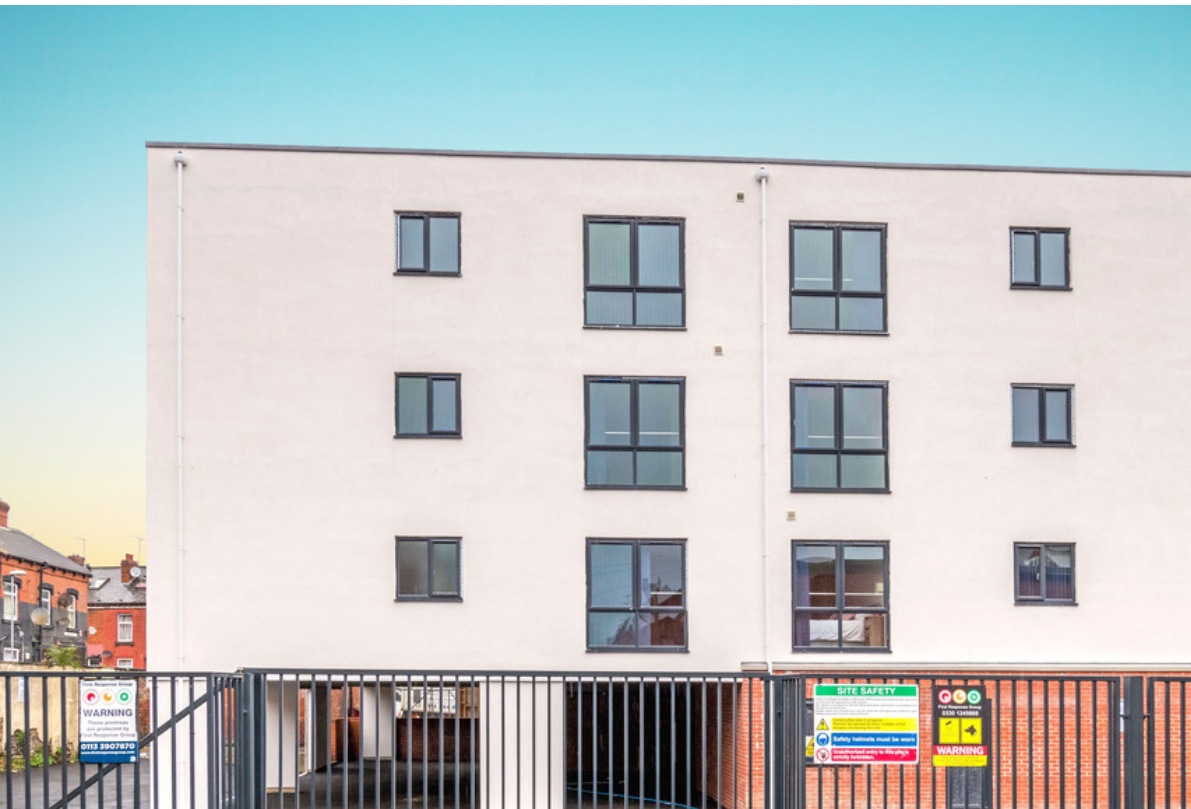
**£750 PCM**

- ONE BEDROOM APARTMENT
- SPACIOUS
- SHORT DISTANCE TO LEEDS
- SECURE PARKING CAN BE

- FURNISHED
- MODERN KITCHENS
- PLENTY OF LIGHT
- CARPETS TO THE BEDROOMS

**70 Top Moor Side, Leeds, LS11  
9JY**

**\*\* SPACIOUS ONE BEDROOM \*\* AVAILABLE  
20TH MARCH \*\* BUILT IN 2023 \*\* MODERN \*\*  
SHORT DISTANCE FROM LEEDS CITY CENTRE  
\*\***



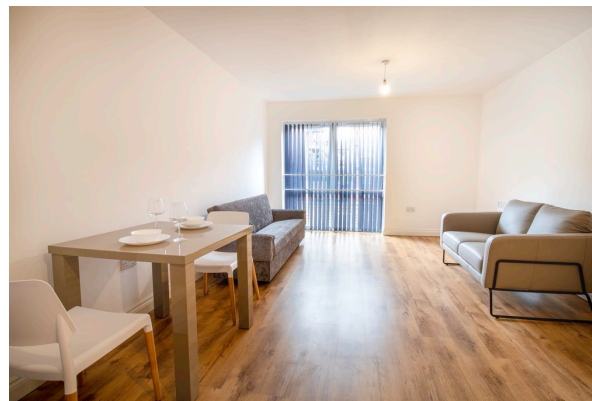
Zenko Properties would like to present this contemporary development built in 2023 comprising of seventeen, 1 and 2 bedroom modern apartments in a range of sizes from 450sqft to 750sqft. Each apartment comes with a quality specification including modern sanitaryware and fitted kitchens. Apartments can benefit from secure allocated car parking space in a gated courtyard for an extra cost and the building has secure fob/code entrance.

Located close to the local amenities, such as the local supermarket, park, Holbeck Working Mens' club, fitness Club and Holbeck Urban Village. It is located 2km to the city centre, making it ideal for working professionals. There is a secure allocated and gated parking space with each apartment, near by there is also free parking on road parking.

The kitchens all contain high quality fitted units with soft closing doors, complemented by grey MDF work surfaces. Appliances include an electric oven, electric (or ceramic) hob, space for a fridge/freezer, and space for a washing machine.

The apartments benefit from electric central heating and feature laminate flooring and double glazing all coming as standard, in most cases with floor to ceiling windows.

Bathrooms and en-suites (where applicable) are tiled and feature contemporary white sanitaryware with chrome fittings and low-level WCs. They also have a partly tiled bath/shower area and modern grey vinyl flooring.



2 The Chandlers, Leeds, West  
Yorkshire, LS2 7EZ

[www.zenkoproperties.co.uk](http://www.zenkoproperties.co.uk)  
0113 247 0777  
[sales@zenkoproperties.co.uk](mailto:sales@zenkoproperties.co.uk)

Agents Note: Whilst every care has been taken to prepare these sales particulars, they are for guidance purposes only. All measurements are approximate are for general guidance purposes only and whilst every care has been taken to ensure their accuracy, they should not be relied upon and potential buyers are advised to recheck the measurements