

Compton

For Rent
**63 Goswell Road
Clerkenwell EC1**

Self-contained Ground and Lower
Ground floor showroom available
with excellent frontage in the heart
of Clerkenwell

For Rent

63 Goswell Road
Clerkenwell EC1V

Size

1,851 Ft²

Rent

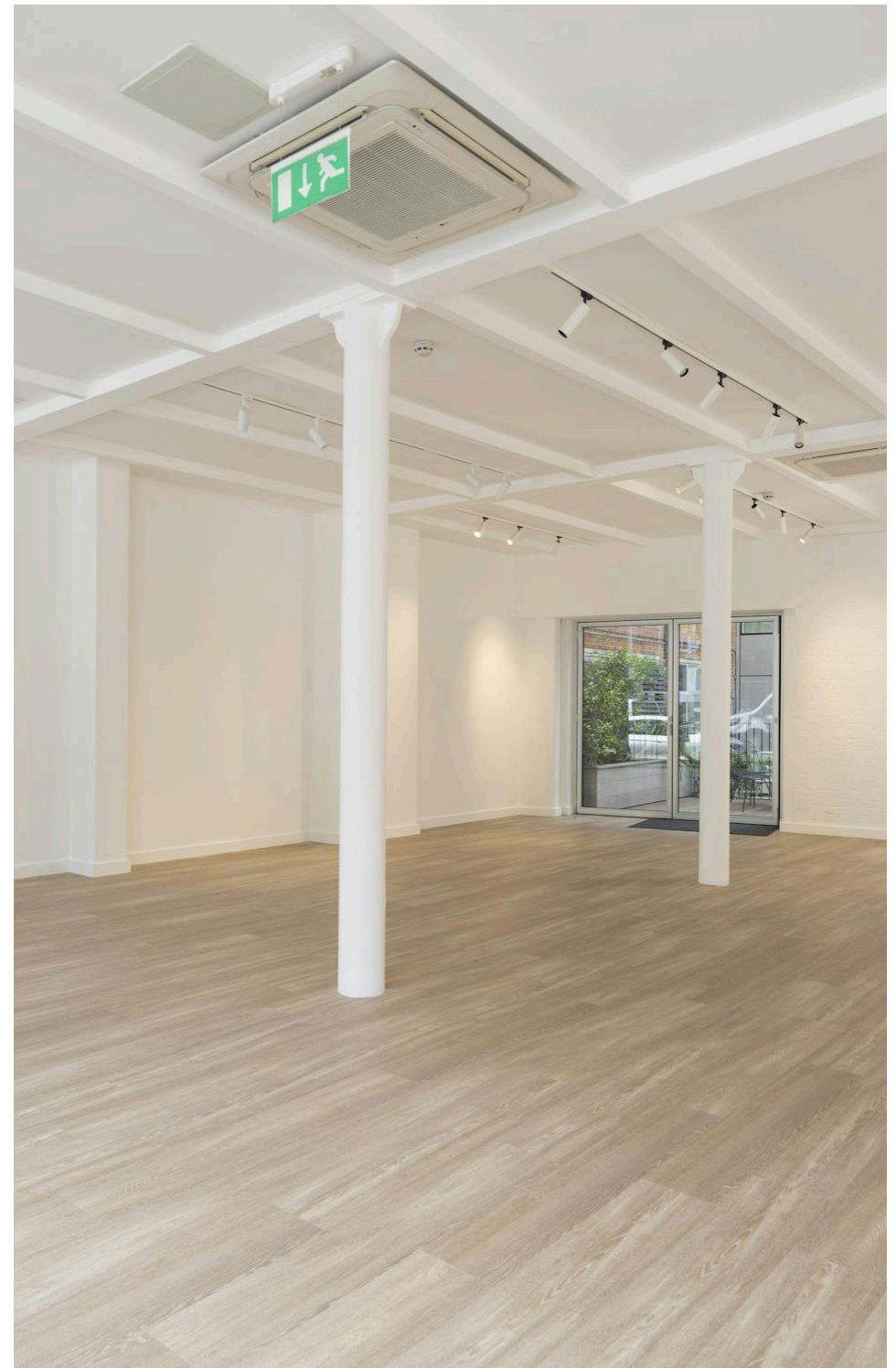
£62.50 per sq ft

Fitout

Not Fitted. Partially Fitted Out

Description

Within the heart of Clerkenwell, this self-contained Ground and Lower Ground floor showroom is available on a new Lease directly from the Landlord. The glass frontage onto Goswell Road allows fantastic branding opportunities and natural light. The unit has an internal staircase to connect both levels and will be offered with a partial fit out for an easy move into the space.



Compton

For Rent

63 Goswell Road
Clerkenwell EC1V

Click to Play



For Rent

63 Goswell Road
Clerkenwell EC1V

Ground Floor

Size

1,851 Ft²

Rent

£62.50 per sq ft

Fitout

Not Fitted. Partially Fitted Out

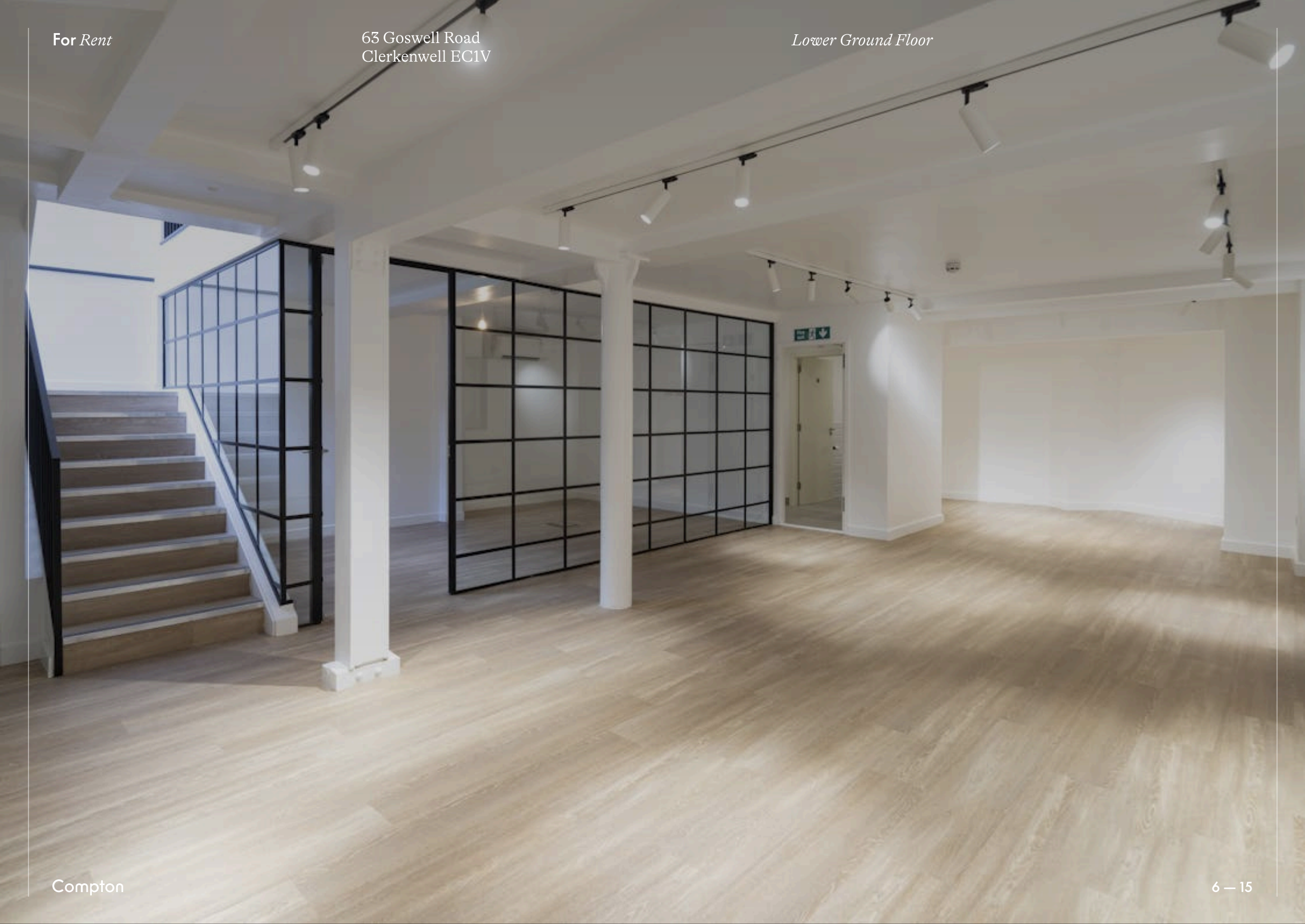


Compton

For Rent

63 Goswell Road
Clerkenwell EC1V

Lower Ground Floor



For Rent

63 Goswell Road
Clerkenwell EC1V

Lower Ground Floor



Staircase



For Rent

63 Goswell Road
Clerkenwell EC1V

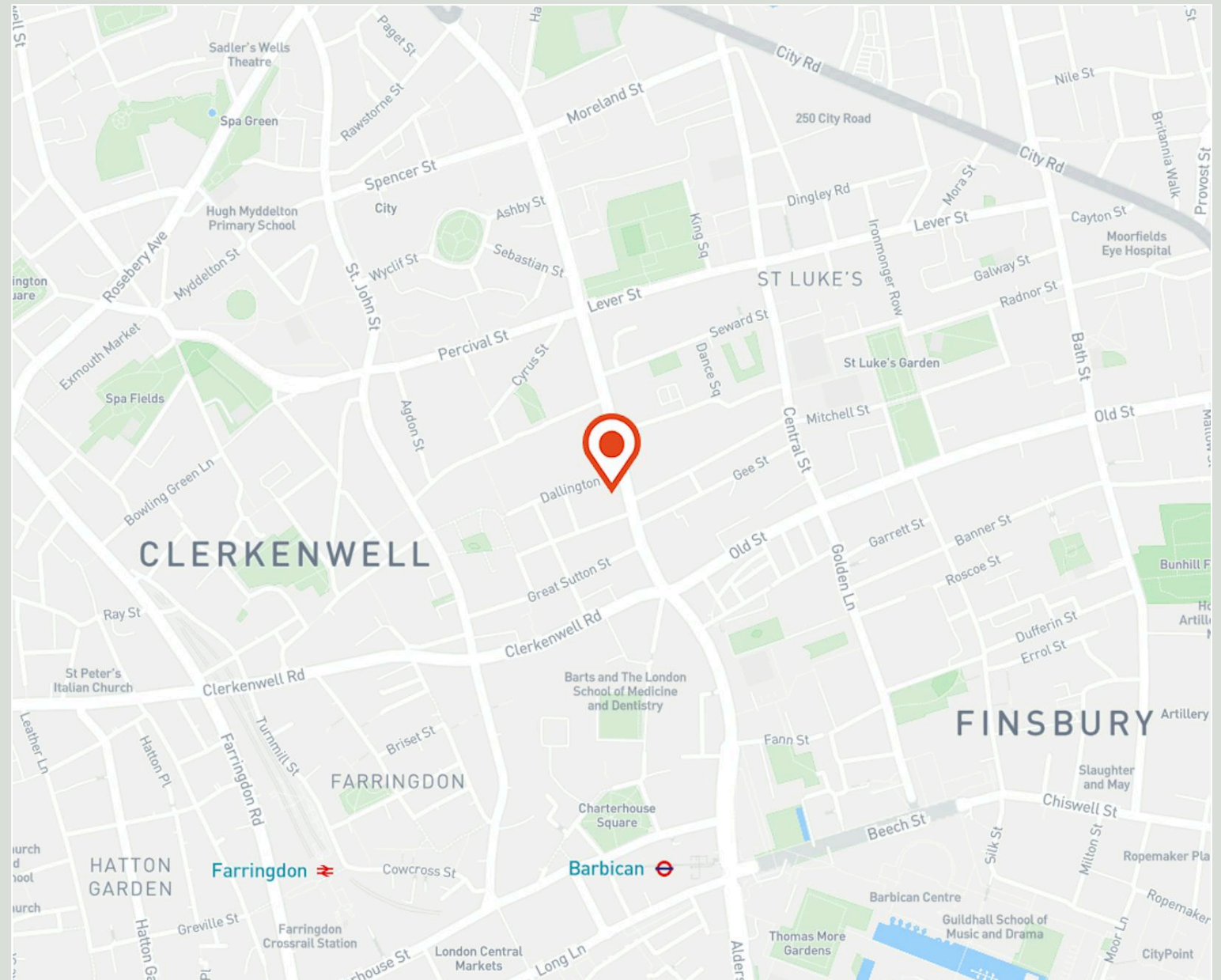
Location

Positioned strategically within London's showroom district, this property is located on Goswell Road in close proximity to the junction with Clerkenwell Road. The unit is conveniently situated within a brief walking distance of Farringdon, Barbican, and Old Street stations, providing numerous options for both tube and train lines.

The recent integration of the Elizabeth Line to Farringdon enhances accessibility, allowing convenient connections to the West or East of London and the attractions each area has to offer.

Furthermore, the property enjoys the advantage of numerous amenities, including cafes, bars, and supermarkets, all within a short distance from the building.

Compton



For Rent

63 Goswell Road
Clerkenwell EC1V

Communal Courtyard

Compton

For Rent

63 Goswell Road
Clerkenwell EC1V

Amenities

- Fully self-contained
- Excellent branding opportunities
- Internal staircase
- Partially fitted with meeting rooms
- Prime Clerkenwell location
- Great floor to ceiling height
- Self-contained WC's

Name	Sq Ft	Rent (Sq Ft)	Rates Payable (Sq Ft)	Service Charge (Sq Ft)	Total /Sq Ft	Total Month	Total Year	Availability
Ground	893	£62.50	£16	£9.05	£87.55	£6,515.18	£78,182.15	Under Offer
Lower Ground	958	£62.50	£16	£9.05	£87.55	£6,989.41	£83,872.90	Under Offer

For Rent

63 Goswell Road
Clerkenwell EC1V

Terms

New full repairing and insuring lease available for a term by arrangement direct from the landlord.

Local Authority

The London Borough of Islington.

VAT

The building is elected for VAT.

Tenure

New Lease

Availability

Available Immediately

Compton Concierge

Want your workspace *managed*?

Find out more

compton.london/concierge

Content

Watch the Film
(click button)



Contact Us

compton.london

020 7101 2020

enquiries@compton.london

All appointments to view must be arranged via sole agents, Compton, through:



Josh Perlmutter

jp@compton.london

0207 101 2020 | 07814 699 096



Emma Higgins

eh@compton.london

0207 101 2020 | 07769 605 295



Michael Raibin

mr@compton.london

0207 101 2020 | 07880 795 679