



15 Hayfell Avenue, Kendal

Offers Over £285,000





15 Hayfell Avenue

Kendal, Kendal

A well proportioned semi detached property pleasantly situated within this popular residential area to the south of Kendal being convenient for all the local amenities including shops and schools which also offers easy access to the Lake District National Park and the M6 motorway.

The property has been well maintained and briefly comprises entrance hall, sitting dining room, fitted kitchen and a shower room to the ground floor. The first floor offers three bedrooms with one having its own cloakroom. The property benefits from gas central heating and double glazing.

Complementing the living space are gardens to the front, side and rear.

- Semi-detached property
- Gardens to the front, side and rear
- Three bedrooms
- Easy access to the town
- Shower room and cloakroom
- Close to local schools and colleges

Travelling from Kendal town centre, proceed south along Aynam Road and continue onto Lound Road. At the roundabout take the first exit onto Burton Road (A65) continue past the Leisure Centre. Turn immediately left just after the traffic lights onto Heron Hill and continue on to Hayfell Avenue then take the left hand turning where number 15 is located on the left.

WHAT3WORDS:mint.torch.garden

Council Tax band: C

Tenure: Freehold

EPC Energy Efficiency Rating: D

EPC Environmental Impact Rating:





GROUND FLOOR

ENTRANCE HALL

10' 9" x 5' 5" (3.28m x 1.66m)

Both max. Double glazed door, double glazed window, radiator, understairs storage.

SITTING/DINING ROOM

21' 8" x 17' 10" (6.61m x 5.43m)

Both max. Two double glazed windows, two radiators, living gas flame fireplace.

KITCHEN

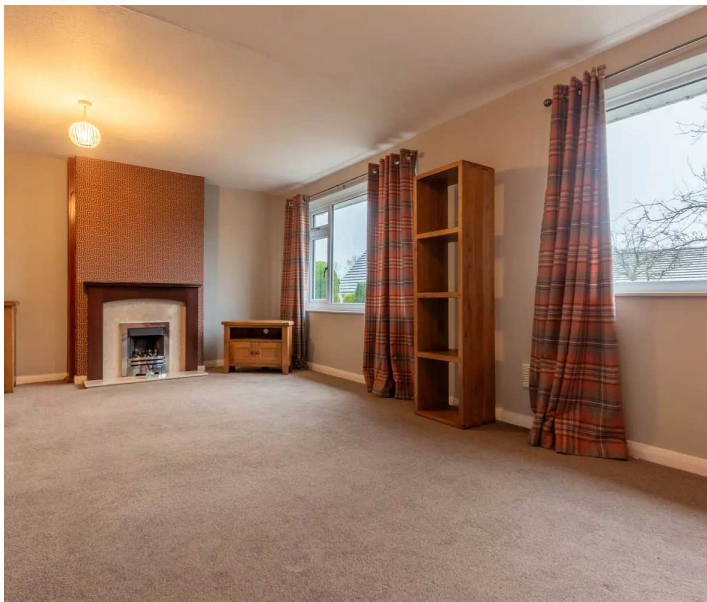
14' 10" x 7' 9" (4.52m x 2.35m)

Both max. Double glazed door to garden, two double glazed windows, radiator, good range of base and wall units, stainless steel sink, integrated double oven, gas hob with extractor filter over, integrated fridge freezer, plumbing for washing machine, fully tiled walls.

SHOWER ROOM

7' 6" x 6' 4" (2.29m x 1.92m)

Both max. Double glazed window, heated towel radiator, three piece suite comprises W.C. wash hand basin to vanity, fully tiled shower cubicle with thermostatic shower fitment, fully tiled walls, tiled flooring.



FIRST FLOOR

LANDING

5' 10" x 2' 9" (1.79m x 0.85m)

Both max.

BEDROOM

15' 2" x 7' 7" (4.63m x 2.30m)

Both max. Double glazed window.

BEDROOM

13' 11" x 9' 9" (4.23m x 2.96m)

Both max. Two double glazed windows, radiator.

CLOAKROOM

3' 7" x 2' 9" (1.08m x 0.84m)

Both max. W.C. wash hand basin.

BEDROOM

9' 8" x 7' 6" (2.95m x 2.29m)

Both max. Double glazed window, built in wardrobe housing gas boiler, loft access.

EPC RATING D

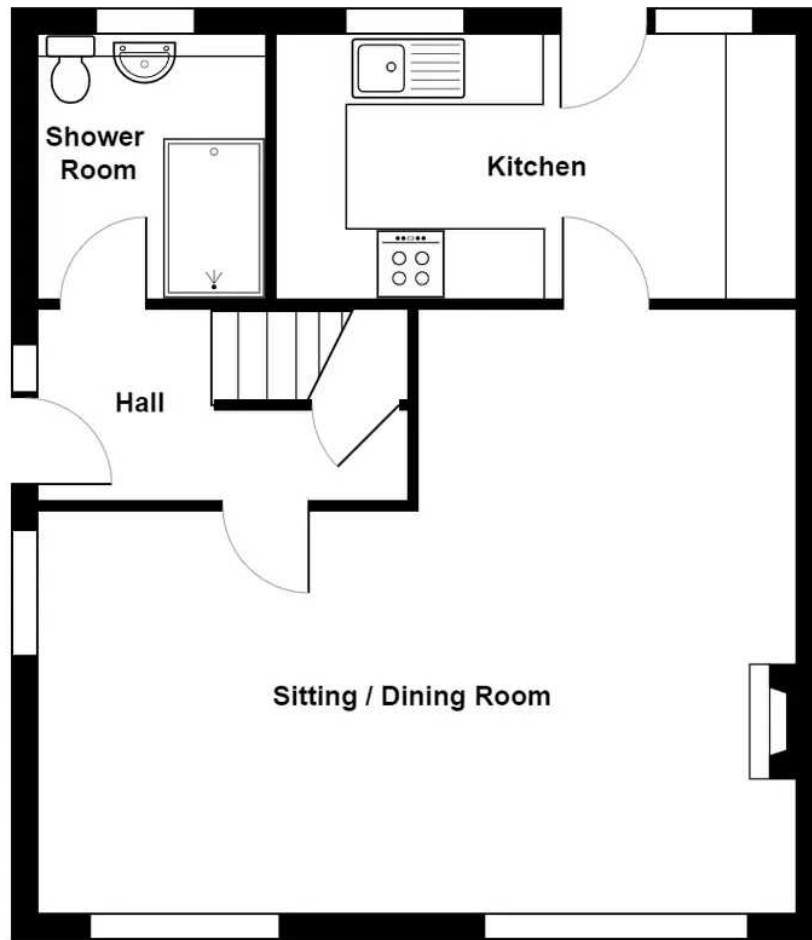
SERVICES

Mains electric, mains gas, mains water, mains drainage.

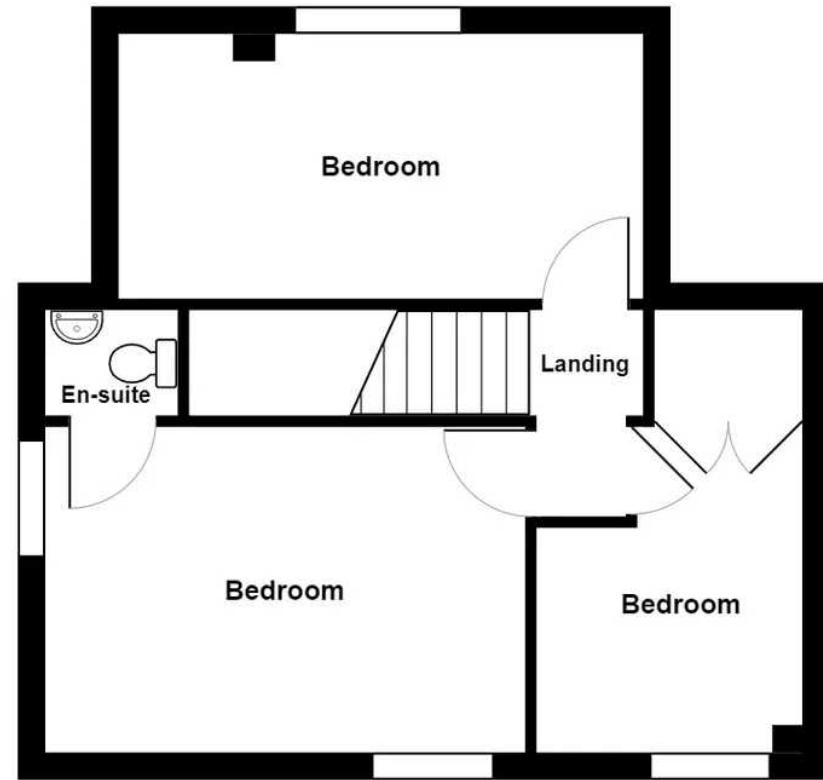








Ground Floor



First Floor



15 Hayfell Avenue, Kendal

Total Area: 87.2 m² ... 938 ft²

For illustrative purposes only - not to scale. The position and size of features are approximate only.
© North West Inspector.

THW Estate Agents

112 Stricklandgate, Kendal - LA9 4PU

01539 815700 • kendal@thwestateagents.co.uk • www.thwestateagents.co.uk

Please note that descriptions, photographs and plans are for guidance only. Services and appliances have not been tested, measurements are approximate and alterations may not have necessary consents. Contact us for property availability and important details before travelling or viewing properties. THW Estate Agents Ltd is a separate legal entity to the solicitor firm of THW Legal Ltd which has different ownership and clients of THW Estate Agents Ltd do not have the same protection as those of THW Legal Ltd.