

Sanders & Sanders

ESTATE AGENTS

STATION ROAD ALCESTER WARWICKSHIRE



A beautifully presented, much improved, and tastefully extended, end of mews property offering versatile accommodation, within a small, select development. The accommodation comprises: Lounge with double patio doors, and feature stove burner, utility, kitchen and extended dining area with double patio doors, downstairs extended bedroom/study/office with en-suite shower room, extended master bedroom, two further bedrooms, en-suite shower room and further shower room. Driveway parking and delightful courtyard style garden with patio and lawned area.

£375,000

Burton House, High Street, Alcester, Warwickshire, B49 5AB.
Tel: 01789 766771 E-mail: alcester@sanders-sanders.co.uk

Web: www.sanders-sanders.co.uk

Station Road, Alcester, Warwickshire, B49 5ET

Lounge

13'9 x 11'2 (4.20 x 3.40m)



Kitchen Area

8'8 x 7'9 (2.65 x 2.37m)



Dining Area

16'3 x 8'8 (4.95 x 2.65m)



Downstairs Bedroom/Study/Office

11'6 x 8'6 (3.50 x 2.60m)



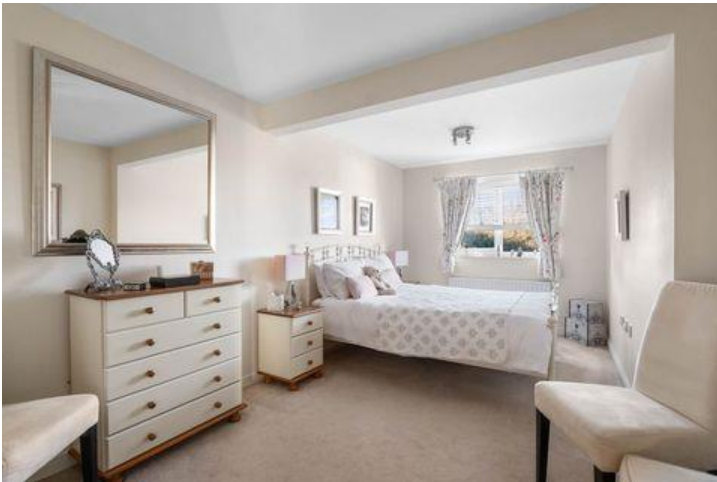
Downstairs En-Suite Shower Room
11'6 x 8'6 (3.50 x 2.60m)



Bedroom Two
12'6 x 9'0 (3.80 x 2.75m)



Bedroom One
18'1 x 9'1 (5.50 x 2.77m)



En-Suite Shower Room



Bedroom Three
7'7 x 6'3 (2.30 x 1.90m)



Shower Room

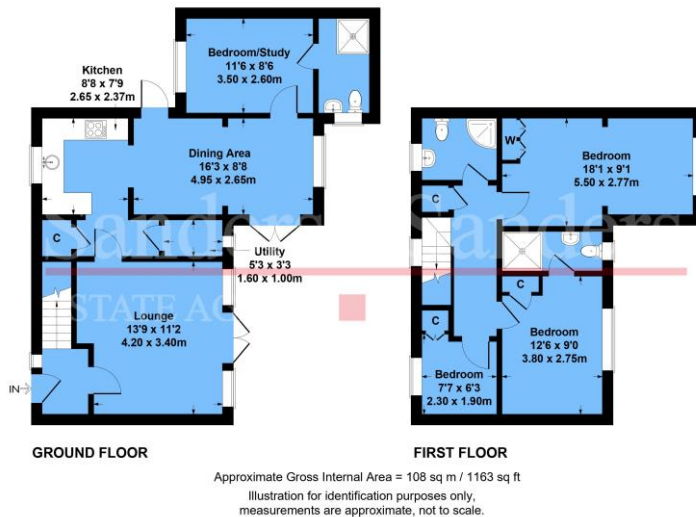


Rear Garden



Floor Plans & Property Details Disclaimer

These floor plans are for identification purposes only in relation to where one room is situated to another. They are not to be relied upon in any way for dimensions, scaling or sq. ft/metres. We will not be held responsible for any loss incurred, due to reliance on these measurements from the floor plans or measurements from the property details. You are advised to confirm all measurements.



Fixtures & Fittings

Please note that the fixtures & fittings shown on the photographs, contained within these property details, do not form part of a fixtures & fittings list. Some items may/may not be included. You are advised to clarify what items are included before entering into any negotiations.