



2 Bedroom Semi-Detached House located in Tiptree.

Find us on..



JOHN ALEXANDER
ESTATE AGENTS

Heathland Avenue Tiptree Colchester CO5 0UW



2



3



0



TBC



FULL DESCRIPTION

OVERVIEW

Located on the 'Florence Park Development' we are delighted to offer this modern and contemporary two-bedroom semi-detached house, which benefits from two double bedrooms, en-suite to the master bedroom, and a separate bathroom on the first floor. The ground floor includes a welcoming entrance hallway, WC, kitchen/diner, and living room. There are two allocated parking spaces to the rear, and a south facing rear garden.

HALWAY

13' 1" x 3' 9" (3.99m x 1.14m)

KITCHEN/DINER

16' 7" x 8' 5" (5.05m x 2.57m)

CLOAKROOM

LOUNGE

16' 6" x 9' 4" (5.03m x 2.84m)

LANDING

BEDROOM ONE

12' x 9' 9" (3.66m x 2.97m)

BEDROOM TWO

12' 4" x 9' 4" (3.76m x 2.84m)

ENSUITE

GARDEN

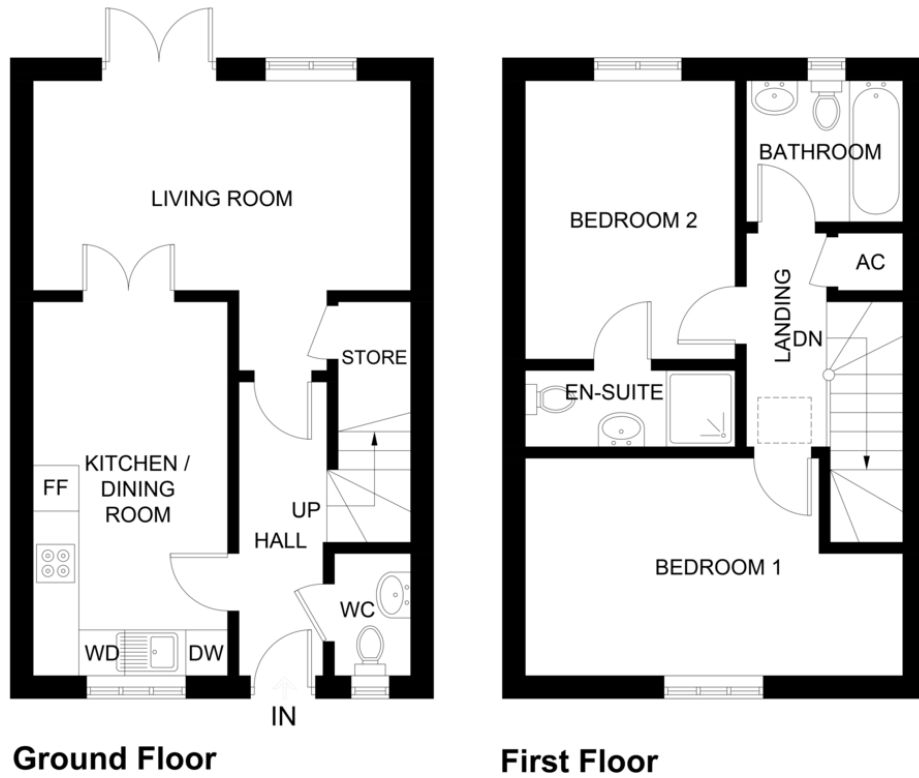
2 allocated car parking spaces.

Asking Price Of
£325,000



FLOORPLAN

Heathland Avenue



Ground Floor

First Floor

Illustration for identification purposes only,
measurements are approximate, not to scale.

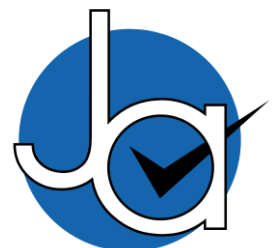
DIRECTIONS

CONTACT
1 Church Road
Tiptree
Colchester
Essex
CO5 0LG

E info@john-alexander.co.uk

T 01621 814334 www.john-alexander.co.uk

Find us on..



JOHN ALEXANDER
ESTATE AGENTS