



Oakview

Malting Lane | Kirby-le-socken | CO13 0EH

FINE & COUNTRY















# OAKVIEW

---

Oakview is a stunning property located in the charming village of Kirby-Le-Soken. This spacious property offers a delightful combination of comfort, elegance, and modern living with its picturesque setting and abundance of desirable features.

Boasting four generously sized bedrooms, this home provides ample space for a growing family or those who appreciate extra room to relax and unwind. The principal bedroom features a luxurious en suite bathroom, ensuring convenience for its occupants. In addition, there is another well-appointed bathroom, catering to the needs of the household and guests.

Step inside and be greeted by the inviting ambiance of the two reception rooms. These versatile spaces can be tailored to suit your lifestyle, whether it be a cosy lounge area for relaxation or a sophisticated formal dining room for entertaining family and friends. The abundance of natural light streaming through the windows creates a warm and inviting atmosphere throughout.

The kitchen is a true haven for culinary enthusiasts, offering ample storage, modern appliances, and a stylish design that seamlessly blends functionality and aesthetics. Prepare delicious meals while enjoying the beautiful garden views that surround this exceptional property.

Spanning an impressive floor area of 1,950 square feet, Oakview provides plenty of room to create cherished memories with loved ones. However, the surprises don't end there. Ascend to the cinema loft room, a versatile space where you can immerse yourself in the latest blockbuster or create a cosy home theatre experience.

Situated in the desirable Malting Lane, Oakview benefits from its peaceful location while still being within easy reach of local amenities, schools, and transport links. The property's charming exterior is complemented by a well-maintained garden, perfect for outdoor gatherings or simply enjoying the tranquility of nature.

Council Tax Band: E

EPC: TBC

Mins Water, Electric, Gas central Heating





# LOCATION

---

Welcome to the delightful village of Kirby-le-Soken, a hidden gem nestled in the heart of the picturesque Essex countryside. With its idyllic setting and charming community, Kirby-le-Soken offers a tranquil escape from the hustle and bustle of city life, while still providing easy access to nearby amenities and attractions.

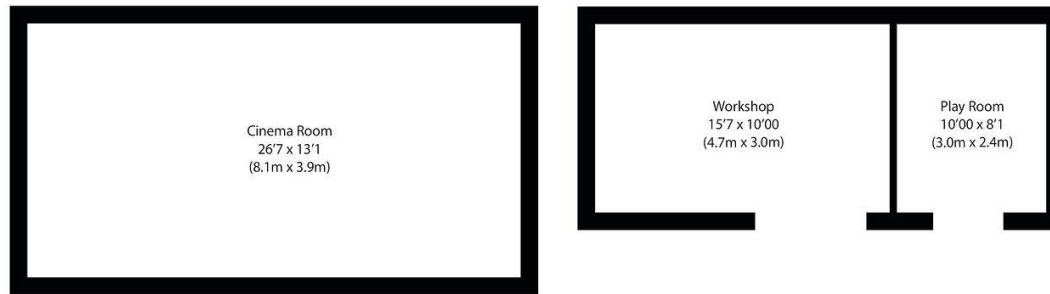
Surrounded by lush green fields and scenic landscapes, this village embodies a sense of serenity and natural beauty. Take leisurely walks along the country lanes, breathe in the fresh air, and enjoy the peaceful ambiance that permeates every corner.

Kirby-le-Soken is a place where history comes alive. The village is steeped in heritage, with stunning historic buildings and landmarks that tell stories of a bygone era. Explore the local church with its striking architecture, or wander through the quaint streets lined with charming cottages, each with its own unique character.

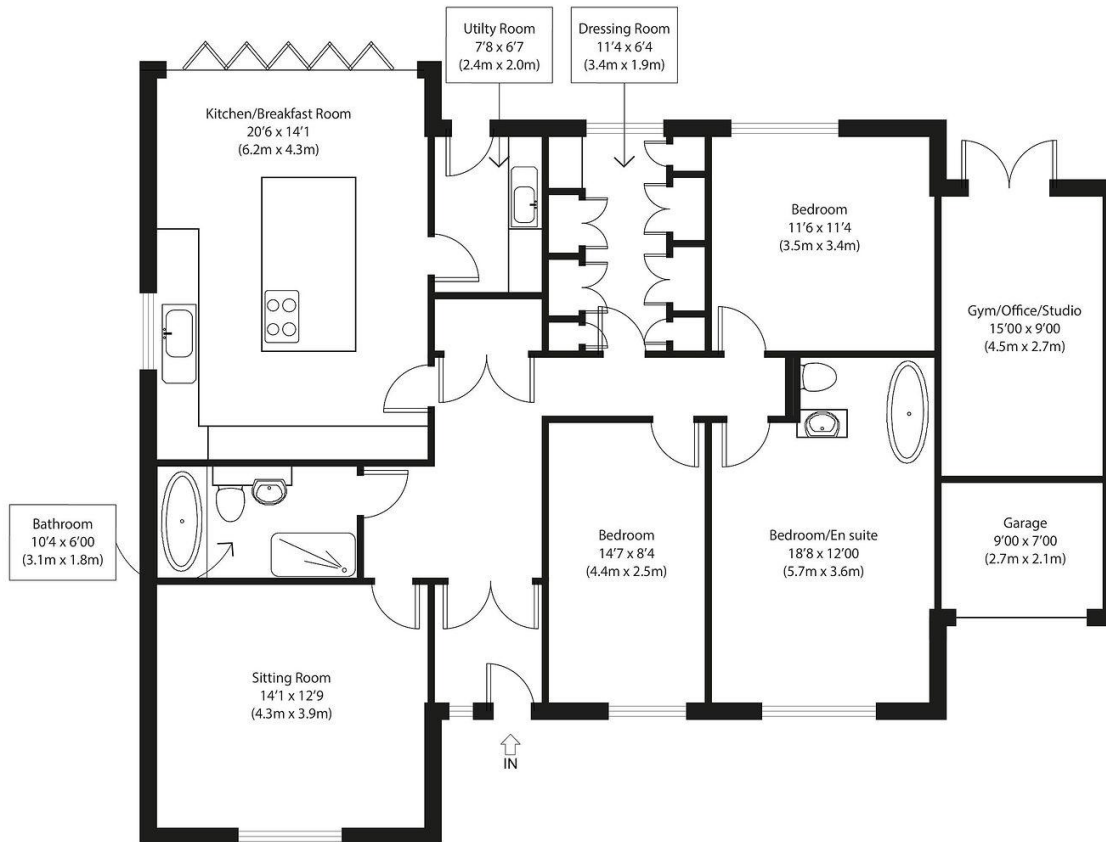
For those seeking an active lifestyle, Kirby-le-Soken offers an array of outdoor pursuits. Enjoy a round of golf at the nearby golf course, take a leisurely bike ride along the scenic countryside, or simply relax and unwind in one of the village's picturesque parks.

Despite its tranquil setting, Kirby-le-Soken is conveniently located just a short distance from essential amenities. The village boasts a range of local shops, cafes, and restaurants, ensuring that daily necessities are within easy reach. Should you require more extensive shopping or entertainment options, nearby towns and cities are easily accessible by car or public transport.

Families with children will appreciate the excellent schools in the area, providing quality education and a nurturing environment for young minds to thrive. The village also offers a close-knit community spirit, with various events and activities that bring residents together and foster a strong sense of belonging.



follow Fine & Country Colchester on



Ground Floor

Approximate Gross Internal Area  
Main House 1950 sq ft (181 sq m)  
Outbuilding 240 sq ft (22 sq m)  
Total 2190 sq ft (203 sq m)

Disclaimer: Floorplan measurements are approximate and are for illustrative purposes only. While we do not doubt the floor plan accuracy and completeness, you or your advisors should conduct a careful, independent investigation of the property in respect of monetary valuation. copyright www.ogphoto.co.uk

FINE & COUNTRY



Agents notes: All measurements are approximate and for general guidance only and whilst every attempt has been made to ensure accuracy, they must not be relied on. The fixtures, fittings and appliances referred to have not been tested and therefore no guarantee can be given that they are in working order. Internal photographs are reproduced for general information and it must not be inferred that any item shown is included with the property. For a free valuation, contact the numbers listed on the brochure. Copyright Â© 2020 Fine & Country Ltd.











Fine & Country Colchester  
Tel: +44 01206 878155  
colchester@fineandcountry.com  
60 Caelum Drive, Colchester, Essex, CO2 8FP