

MARTYN COX
— & COMPANY —



1 Furrow Crescent, Curbridge – OX29 0AP
Witney

Welcome to 1 Furrow Crescent

Internally, the accommodation has been designed to maximise living space and comfort. Upon entering the property, a wide hall gives way to a well-proportioned living room, and a smartly fitted kitchen with a range of built-in appliances. From the entrance hall, stairs rise to the first floor, where two of the three bedrooms have fitted wardrobes and the main bedroom has an en suite shower room. A well-appointed bathroom and a downstairs cloakroom with WC add further appeal to this lovely home.

Outside, there is a driveway to the right hand side of the house offering a generous amount of off-road parking. In addition, the rear garden has been thoughtfully landscaped and provides a perfect spot for relaxation and entertaining guests.

The property reflects the very best in terms of modern day living and viewing could not be more highly recommended.

Council Tax band: D £2,161.48

Tenure: Freehold

EPC Energy Efficiency Rating: B

Stylish Luxurious Living in Curbridge

Fabulous Modern Interior

Well Proportioned Living Room

Breakfast Kitchen with Integral Appliances

Master Bedroom and En Suite Shower Room

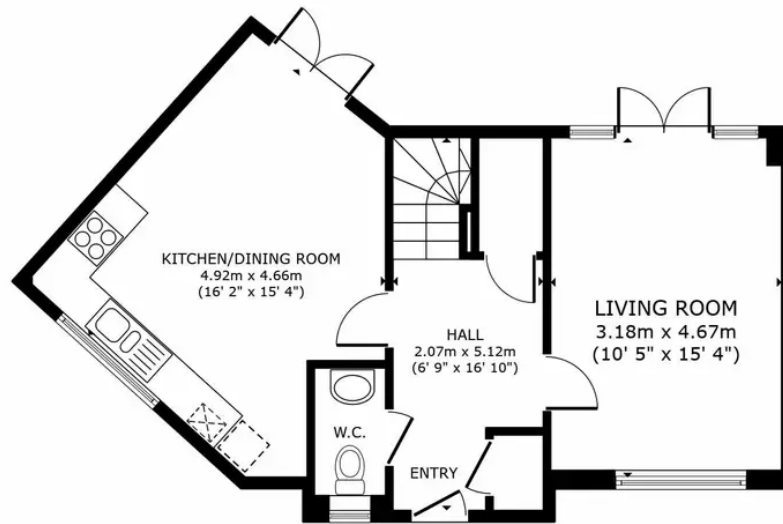
Two Further Bedrooms

Family Bathroom and Cloakroom with WC

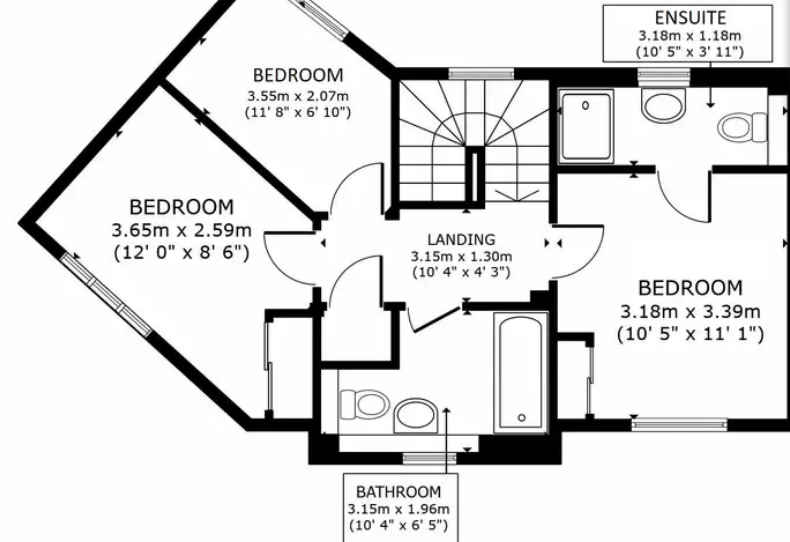
Driveway and Landscaped Rear Garden







FLOOR 1



FLOOR 2

GROSS INTERNAL AREA
 FLOOR 1 46.3 m² (499 sq.ft.) FLOOR 2 46.3 m² (498 sq.ft.)
 TOTAL : 92.6 m² (997 sq.ft.)
 SIZES AND DIMENSIONS ARE APPROXIMATE, ACTUAL MAY VARY.



Martyn Cox & Company

Martyn Cox & Company, 6-8 Corn Street, Witney - OX28 6BL

01993 779020 • property@martyncox.com • www.martyncox.com/

Every attempt has been made to ensure accuracy, however these property particulars are approximate and for illustrative purposes only. They have been prepared in good faith and they are not intended to constitute part of an offer of contract. We have not carried out a structural survey and the services, appliances and specific fittings have not been tested. All photographs, measurements, floor plans and distances referred to are given as a guide only