



Flat 16, 4 Littleworth Road, Esher
£2,000 pcm

Flat 16

4 Littleworth Road, Esher

A recently constructed and impeccably presented, two double bedroom ground floor luxury apartment. EPC rating C.

Council Tax band: E

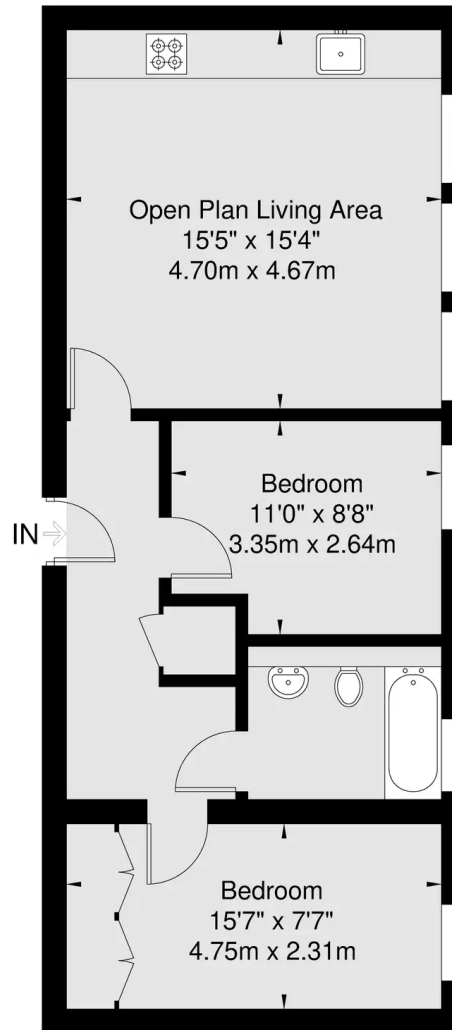
Tenure: Leasehold

- Luxury modern apartment
- Furnished or unfurnished
- Available from 21st March
- Concierge
- Open plan kitchen/reception room
- Two double bedrooms
- Beautifully appointed bathroom
- Allocated parking space





Littleworth Road
Approx Gross Internal Area
Ground Floor = 56.5 Sq m 608 Sq Ft



Ground Floor

Viewmedia @ 2024
Viewmedia.co.uk

Whilst every attempt has been made to ensure the accuracy of this floor plan, measurements of doors, windows and rooms are approximate and no responsibility is taken for any error or omission. This illustration is for identification purpose only. Measured and drawn accordance with RICS guidelines. Not drawn to scale, unless stated. Dimensions shown are to the nearest 3" and are to the points indicated by the arrow heads.