



12 Bessingby Road, Ruislip

Ruislip

£520,000

Lr LAWRENCE RAND

12 Bessingby Road

Ruislip, Ruislip

A three-bedroom two-bathroom terrace house situated on this popular residential road with off street parking and a South facing garden in close proximity to Ruislip Manor's multiple shopping and transport facilities.

Council Tax band: D

Tenure: Freehold

EPC Energy Efficiency Rating: D

EPC Environmental Impact Rating: E

- Three bedrooms
- Two bathrooms
- Off street parking
- South facing garden





Lr LAWRENCE RAND



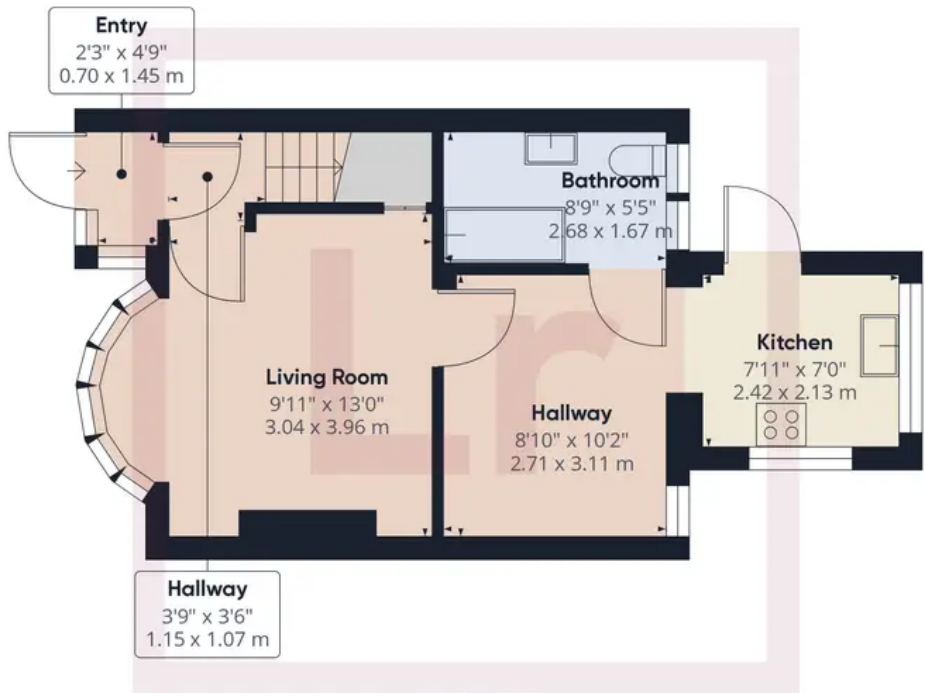
Lr LAWRENCE RAND



Lr LAWRENCE RAND



Lr LAWRENCE RAND

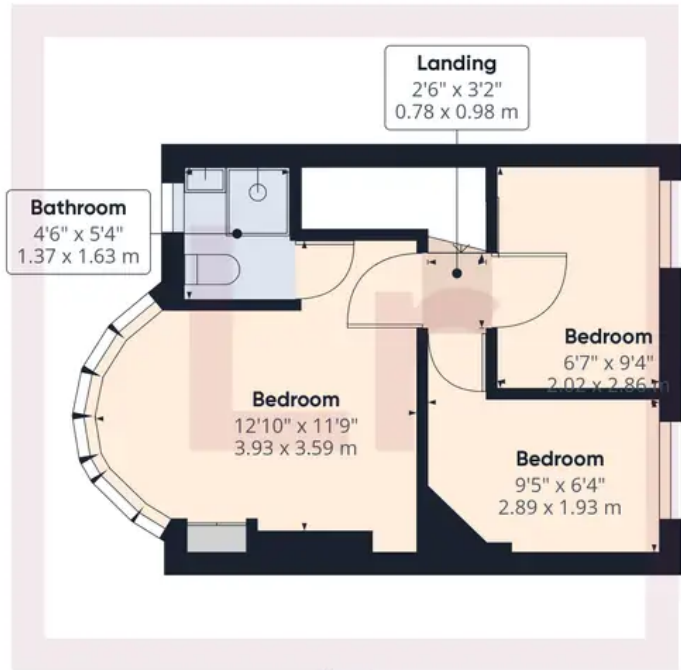


Ground Floor

Approximate total area⁽¹⁾

681.43 ft²

63.31 m²



Floor 1

(1) Excluding balconies and terraces

While every attempt has been made to ensure accuracy, all measurements are approximate, not to scale. This floor plan is for illustrative purposes only.



Lawrence Rand

Lawrence Rand, 106 Victoria Road - HA4 0AL

01895 632211

Info@lawrence-rand.co.uk

www.lawrence-rand.co.uk/



LAWRENCE RAND