

HOME  TRUTHS

Eden Street, Leyland

PR25 2FR


£160,000



Fabulous three bedroom terraced property with many original features and beautifully presented throughout with a real strength of colour, in a central location within easy walking distance of town centre amenities, primary transport routes and local schools. Step into the vestibule with original tiled flooring and from there to the entrance hallway with original floorboards. To the front, reception one is a great place to relax whilst, to the rear, the equally spacious reception two makes a first class dining room. Leading off is the kitchen comprising a range of wall and base units and electric hob, with extractor over, oven and grill, and space, power and plumbing for additional appliances. Externally the property has a west facing courtyard garden. To the first floor is access to the boarded loft from the spacious landing. Bedroom one is to the rear with original fireplace, whilst bedroom two is a second double to the front also with fireplace and bedroom three a comfortable single. Completing the first floor, the elegant and fabulous bathroom comprises bath, rainfall mixer shower in cubicle, wc, bidet, wash hand basin and ladder heated towel rail. Since purchase, the current owners have significantly refurbished the property including the bathroom, Worcester Greenstar central heating boiler, radiators with TRV, doors and hardware to transform this into a lovely family home.

Fabulous three bedroom terraced property with many original features and beautifully presented throughout with a real strength of colour, in a central location within easy walking distance of town centre amenities, primary transport routes and local schools.

Council Tax band: A

Tenure: Freehold

- Beautiful terrace property
- Three bedrooms
- Elegant bathroom
- Modern kitchen
- Town centre location
- Over 900 square feet of accommodation



HOME  TRUTHS

Ecclestone Branch
265 The Green, Ecclestone, PR7 5TF
01257 451673

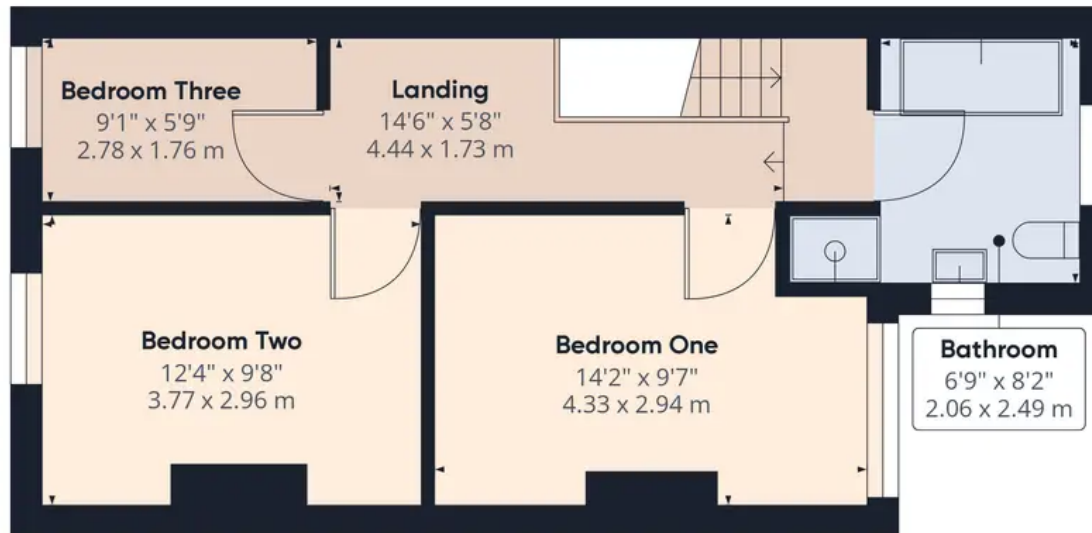
Coppull Branch
244 Spendmore Lane, Coppull, PR7 5DE
01257 794588

www.hometruthslancs.co.uk
office@hometruthslancs.co.uk





Floor 1



Floor 2

Approximate total area⁽¹⁾
940 ft²
87.33 m²

(1) Excluding balconies and terraces

While every attempt has been made to ensure accuracy, all measurements are approximate, not to scale. This floor plan is for illustrative purposes only.

GIRAFFE360