

KINGSTON HOUSE EAST

KNIGHTSBRIDGE SW7



Neutrally decorated throughout with two well sized double bedrooms, two bathrooms one en suite, the apartment offers open plan living room kitchen and totals nearly 950 sq ft. With view looking out over Hyde Park, and beyond the apartment is located on the 7th floor of this well maintained, portered block in Knightsbridge.



Kingston House East is a purpose built block that sits facing Hyde Park and also enjoys use of the 2 acre landscaped communal garden and is a short stroll to all of the internationally renowned amenities of Knightsbridge.

FEATURES

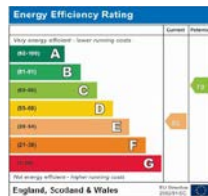
- Principal Bedroom with Ensuite Bathroom
- Double Bedroom
- Family Bathroom
- Reception Room
- Kitchen

Price: £1,950,000

Tenure: Leasehold with 117 years remaining

Service Charge: Approx £13,585 per annum

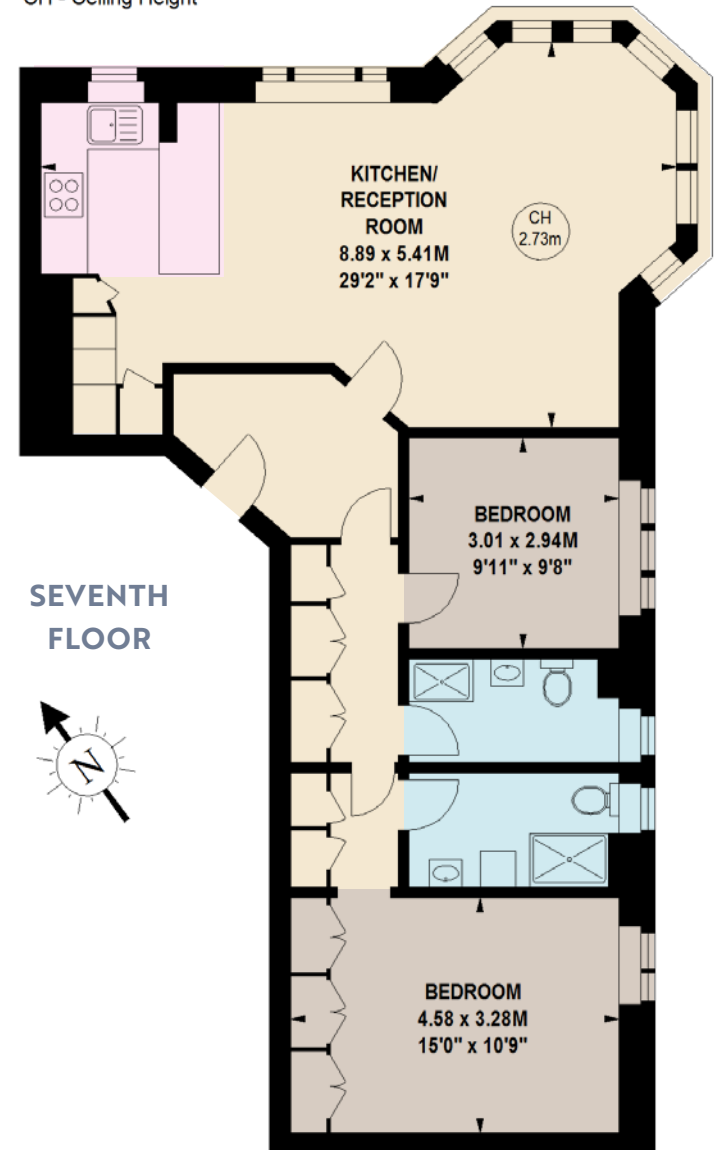
These details have been prepared for general guidance only and should not be relied upon by prospective purchaser/tenants who before proceeding must check and otherwise satisfy themselves as to the property and the nature, state and availability of any facility or service.



APPROX. GROSS INTERNAL AREA

947 sq ft / 87.98 sq m

Key :
CH - Ceiling Height



NVP
NICOLAS VAN PATRICK

6-8 MONTELIER STREET,
LONDON SW7 1EZ
SALES | +44 (0)20 7581 8277
LETTINGS | +44 (0)20 7590 1200
info@nicolasvanpatrick.com
www.nicolasvanpatrick.com