



2 bedroom Apartment located in Colchester.

Guide Price
£180,000 - £190,000

Find us on..




JOHN ALEXANDER
ESTATE AGENTS



JOHN ALEXANDER
ESTATE AGENTS

**Gilbert Court,
Clarendon Way
Colchester
CO1 1DL**

FULL DESCRIPTION

OVERVIEW

***GUIDE PRICE OF £180,000 -
£190,000 ***

John Alexander are pleased to present this two bedroom ground floor apartment to the market. Situated in the popular North Station area of Colchester within minutes of Colchester mainline station and Turner Rise Retail Park with its array of shops and restaurants. The benefits of this property include open plan living, a fitted kitchen, small terrace area, bathroom and off road allocated parking.

HALLWAY

17' 7" x 3' 9" (5.36m x 1.14m)

KITCHEN/LIVING ROOM

22' 5" x 10' 0" (6.83m x 3.05m)

BEDROOM ONE

15' 10" x 10' 2" (4.83m x 3.1m)

BEDROOM TWO

15' 10" x 7' 1" (4.83m x 2.16m)

BATHROOM

7' 8" x 5' 6" (2.34m x 1.68m)



2



1



1



EPC

C

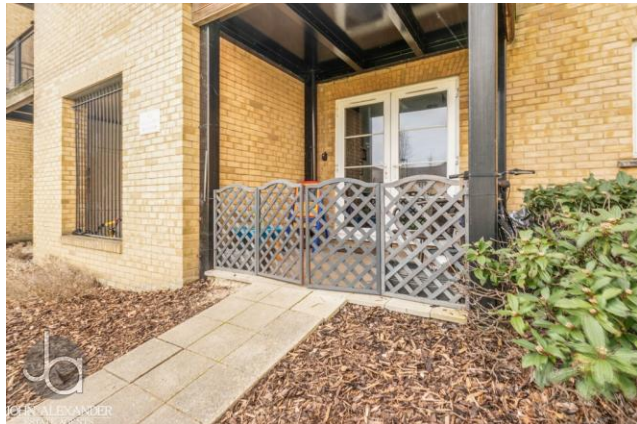




JOHN ALEXANDER
ESTATE AGENTS

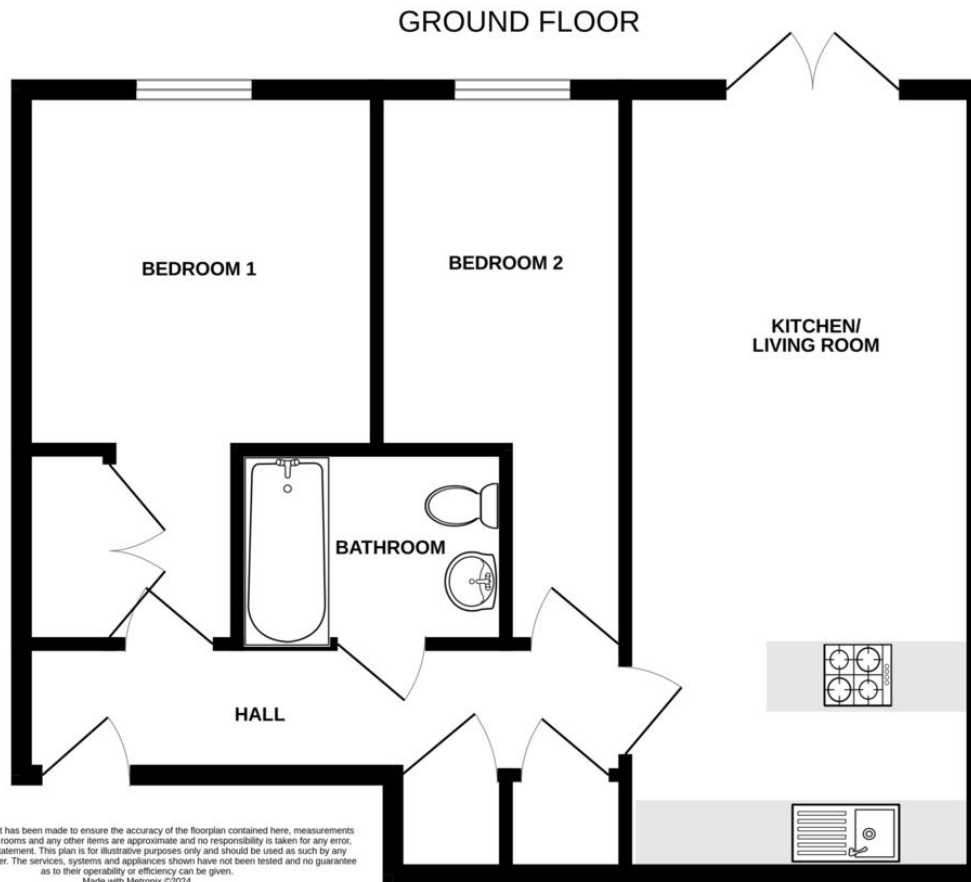


JOHN ALEXANDER
ESTATE AGENTS



JOHN ALEXANDER
ESTATE AGENTS

FLOORPLAN



DIRECTIONS

CONTACT

**99 London Road
Stanway
Colchester
Essex
CO3 0NY**

E sales@john-alexander.co.uk

T 01206 656007

www.john-alexander.co.uk

Find us on..



JOHN ALEXANDER
ESTATE AGENTS