

ANWYL
thoughtful homes



the kinnerton

3 bed semi-detached

A perfect 3 bedroom semi-detached starter home for first time buyers. Key features include *open plan* kitchen/diner, *spacious lounge* and master bedroom with en-suite.

got
questions?

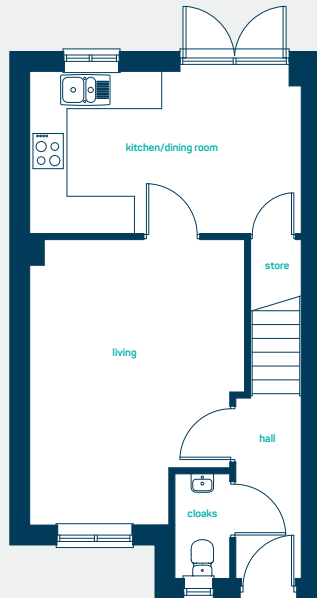
call...

**03300
244 944**

www.anwylhomes.co.uk

everything considered.

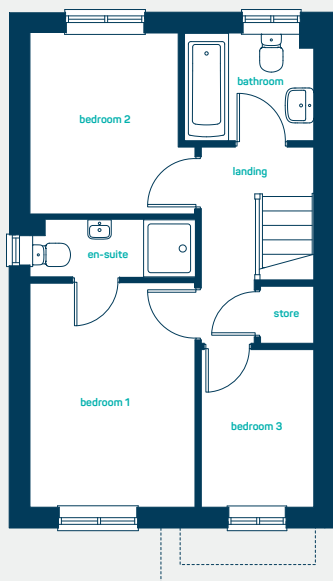
perfect for
first time buyers



ground floor

kitchen/diner: 14'8" x 8'9"
living room: 15'5" x 11'8"
cloaks: 5'8" x 3'0"

kitchen/diner: 4.48m x 2.68m
living room: 4.71m x 3.54m
cloaks: 1.73m x 0.91m



first floor

bedroom 1: 11'7" x 8'7"
en-suite: 8'7" x 2'11"
bedroom 2: 9'4" x 7'8"
bedroom 3: 8'2" x 5'10"
bathroom: 6'8" x 5'7"

bedroom 1: 3.54m x 2.60m
en-suite: 2.60m x 0.90m
bedroom 2: 2.85m x 2.34m
bedroom 3: 2.49m x 1.78m
bathroom: 2.04m x 1.70m

the kinnerton

3 bed semi-detached

www.anwylhomes.co.uk

This is a computer generated image of the kinnerton, elevation treatment may vary. Room sizes are approximate, dimensions are taken from the longest room point (please consult homes advisor for measurement points). Plots may be handed and any garages may be single or double. Kitchen and bathroom layouts are indicative. These plans are correct at the time of going to press, but may be subject to change during construction. Please ensure that you check for specific plot details.
22/07/19

get in
touch...
**03300
244 944**

everything considered.