



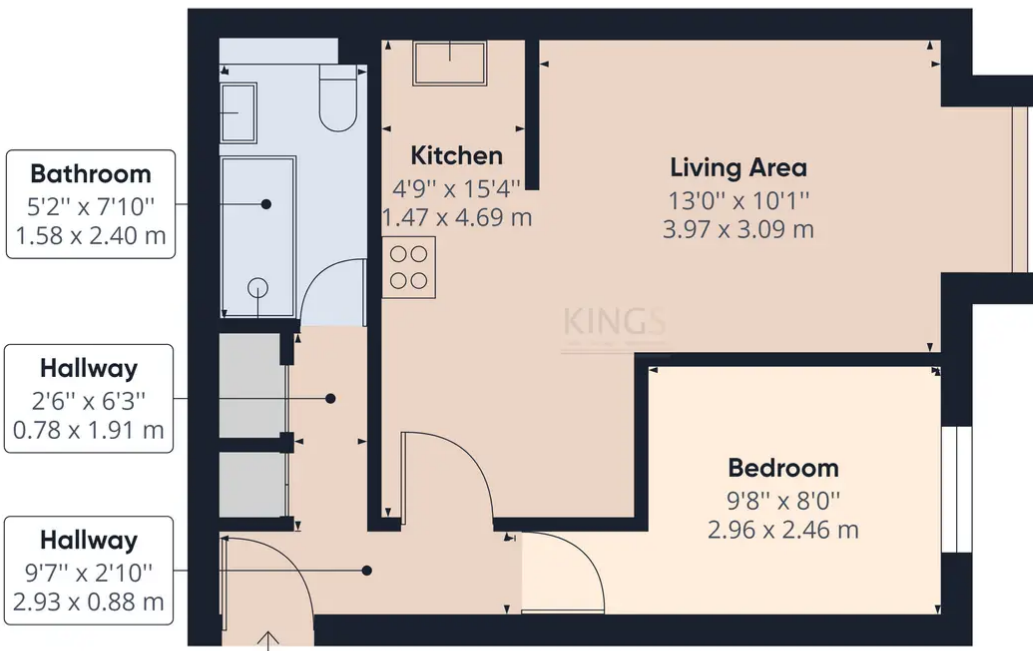
Flat 12, Newlands Old Hertford Road, Hatfield

£225,000 Leasehold

FIRST FLOOR APARTMENT • SPACIOUS LIVING ROOM • OPEN PLAN KITCHEN • NEWLY REFURBISHED BATHROOM •
NEWLY INSTALLED WINDOWS • ALLOCATED PARKING SPACE • CLOSE TO TRAIN STATION • CHAIN FREE • LEASEHOLD •
EPC RATING - C

KINGS

Sales Lettings Management



Approximate total area⁽¹⁾
437.46 ft²
40.64 m²

(1) Excluding balconies and terraces

While every attempt has been made to ensure accuracy, all measurements are approximate, not to scale. This floor plan is for illustrative purposes only.

GIRAFFE360

