



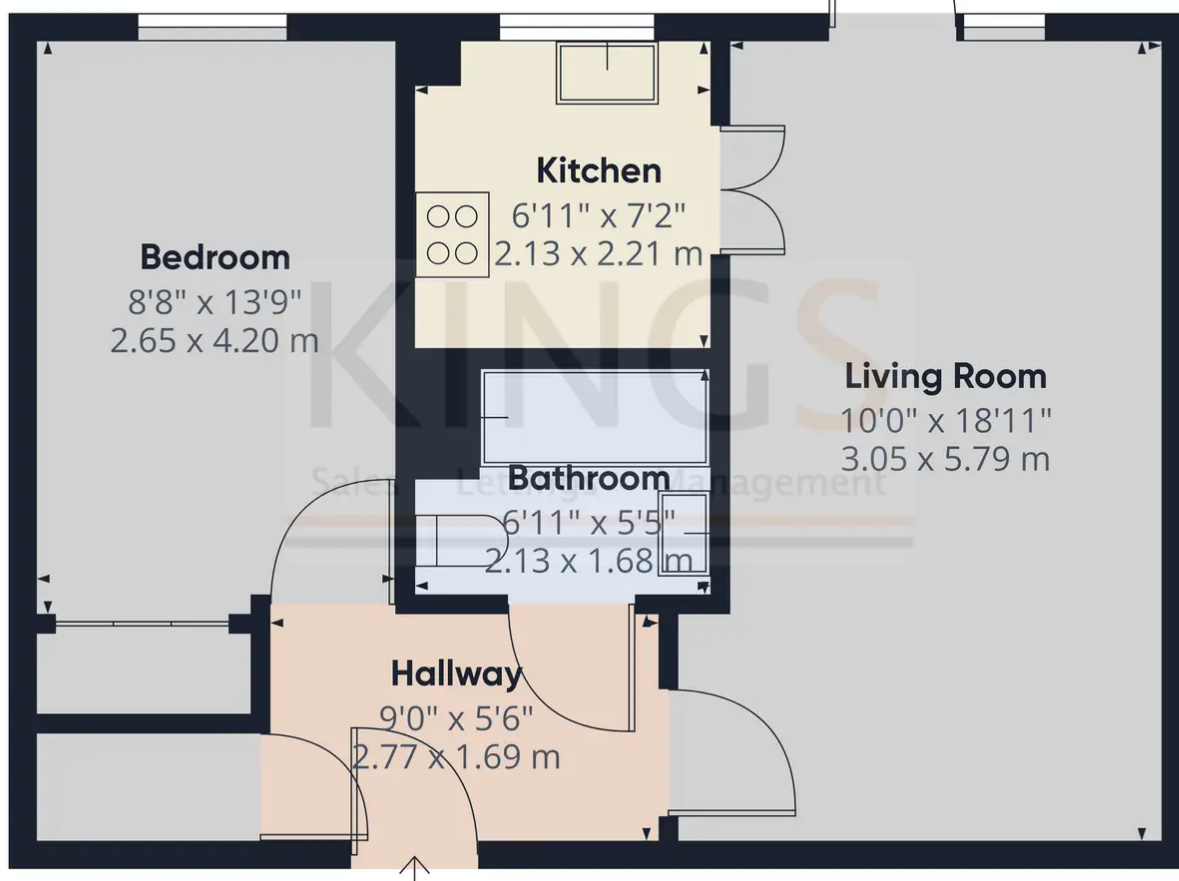
## Lewington Court, 591 Hertford Road

£115,000

FIRST FLOOR APARTMENT • ONE DOUBLE BEDROOM • PRIVATE BALCONY • LIFT SERVICED BLOCK • OVER 60'S DEVELOPMENT • COMMUNAL FACILITIES • CLOSE TO SHOPS AND AMENITIES • CHAIN FREE • LEASEHOLD • EPC RATING - TBC

# KINGS

Sales Lettings Management



Approximate total area<sup>0</sup>  
492.55 ft<sup>2</sup>  
45.76 m<sup>2</sup>

Excluding balconies and terraces

While every attempt has been made to ensure accuracy, all measurements are approximate, not to scale. This floor plan is for illustrative purposes only.

GIRAFFE360

