



## High Dells, Hatfield

£1,650 pcm Freehold

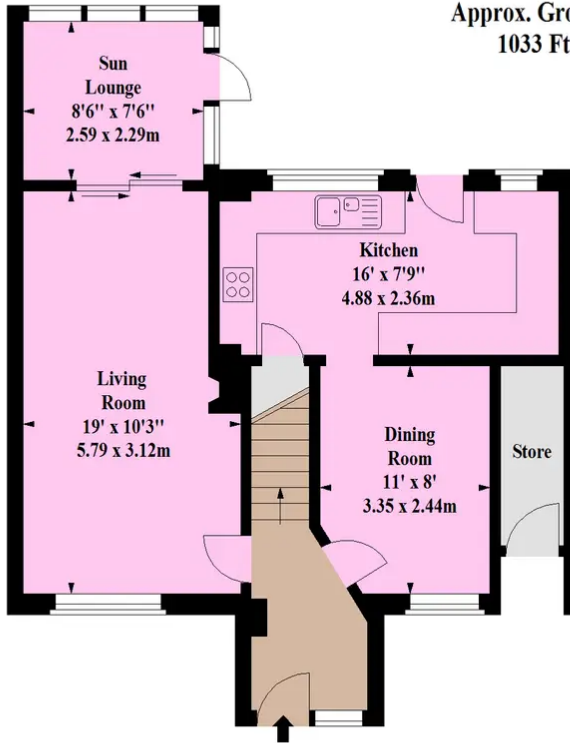
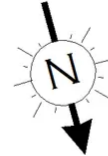
MID TERRACE HOUSE • THREE DOUBLE BEDROOMS • SPACIOUS LIVING ROOM • CONSERVATORY • DINING ROOM • KITCHEN WITH APPLIANCES • SOUTH FACING REAR GARDEN • UNFURNISHED • AVAILABLE ASAP • EPC RATING - D

# KINGS

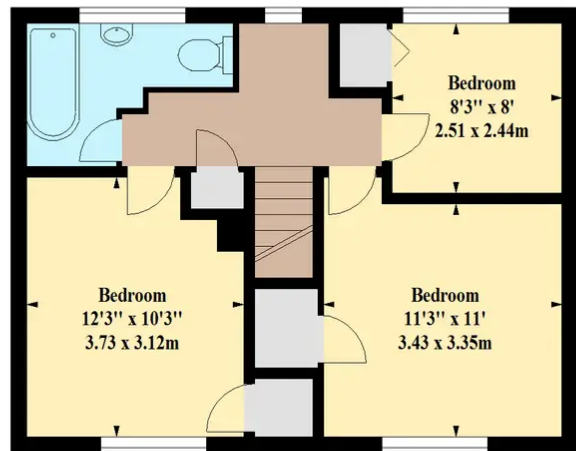
Sales Lettings Management

**High Dells,  
Hatfield, AL10**

Approx. Gross Internal Area \*  
1033 Ft<sup>2</sup> - 95.97 M<sup>2</sup>



**Ground Floor**



**First Floor**

Whilst every attempt has been made to ensure the accuracy of the floor plan contained here, measurements of doors, windows, rooms and any other items are approximate and no responsibility is taken for any error, omission or mis-statement. This plan is for illustrative purposes only and should be used as such by any prospective purchaser. The services, systems and appliances shown have not been tested and no guarantee as to their operability or efficiency can be given

