

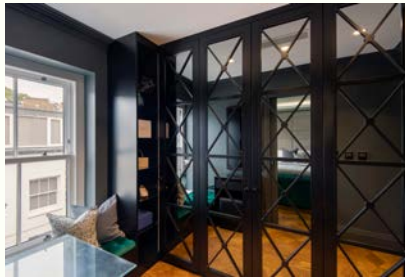
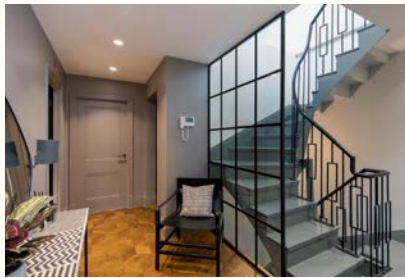


CHEVAL PLACE

KNIGHTSBRIDGE SW7



Newly renovated duplex in the heart of Knightsbridge with direct lift access. This bright and spacious apartment measures 1,345 sq ft and is set over the upper two floors in a handsome brick building. Thoughtfully designed with two bedrooms, two bathrooms plus guest loo on the first floor leading up to a bright open plan sitting room and kitchen diner on the upper floor complete with roof terrace, making this the ideal entertaining space.

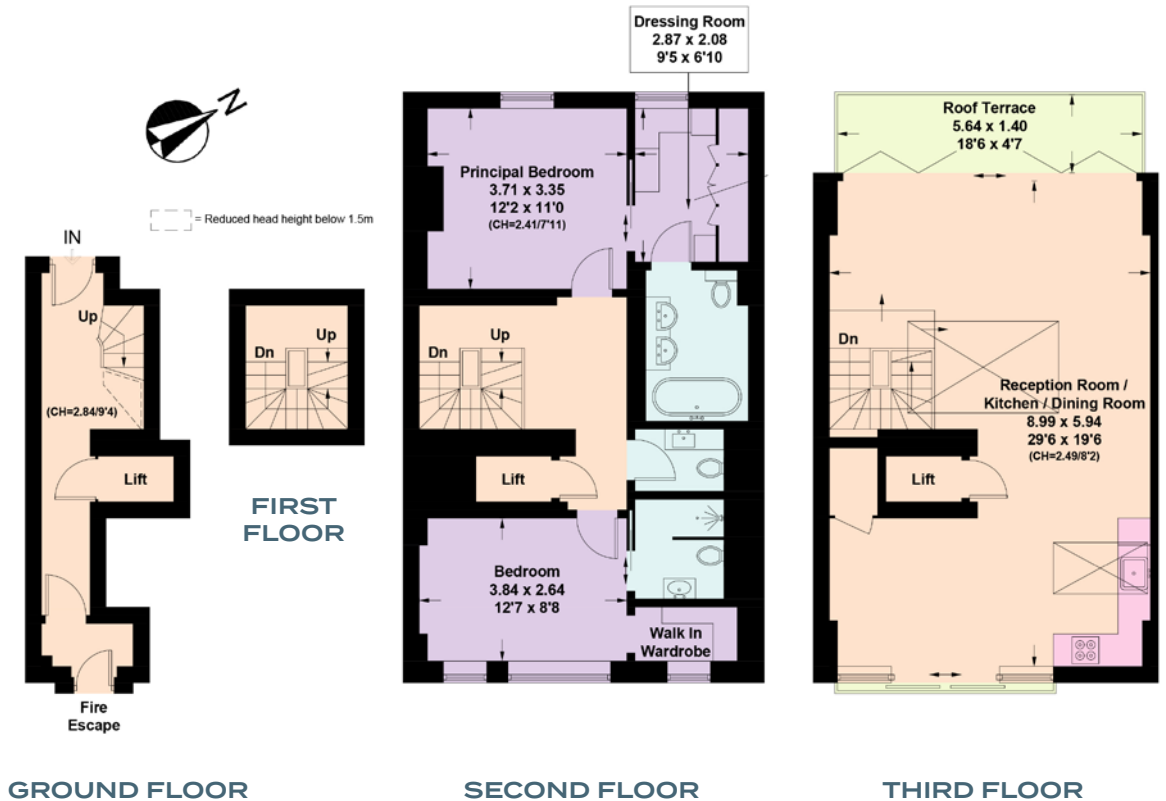


Cheval Place sits quietly in the heart of Knightsbridge village and within moments of Harrods and all the other internationally renowned shops and restaurants Knightsbridge has to offer as well as the vast green expanse that is Hyde Park.

FEATURES

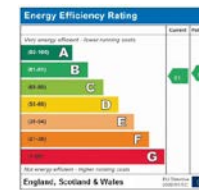
- Two Double Bedrooms
- Two Bathrooms ■ Kitchen
- Diner ■ Reception
- Terrace Lift

APPROX. FLOOR AREA: 1,345 Sq Ft / 125 Sq M
(Including Lift on the Ground Floor Only)
INCLUDING LIMITED USE AREA (2 Sq M / 21 Sq Ft)
TERRACE AREA = 8.2 sq m / 88 sq ft



*THIS FLOORPLAN IS FOR GUIDANCE ONLY AND NOT FOR VALUATION PURPOSES

PRICE: £2,650,000
TENURE:
Leasehold with 149 Years Remaining
SERVICE CHARGES: TBC



NVP
NICOLAS VAN PATRICK

6-8 MONTPELIER STREET,
LONDON SW7 1EZ
SALES | +44 (0)20 7581 8277
LETTINGS | +44 (0)20 7590 1200
info@nicolasvanpatrick.com
www.nicolasvanpatrick.com

These details have been prepared for general guidance only and should not be relied upon by prospective purchaser/ tenants who before proceeding must check and otherwise satisfy themselves as to the property and the nature, state and availability of any facility or service.