



2 Bedroom Close to High Street

Bath Court, Bath Road, Cricklade, SN6 6DY

Guide Price £300,000

**mcfarlane**  
property.com

## End Terraced Home with Garage Cricklade, Wiltshire

- CHARMING TWO BEDROOM COTTAGE
- REFURBISHED THROUGHOUT
- WALKING DISTANCE TO LOCAL AMENITIES

- DELIGHTFUL TWO BEDROOM COTTAGE -  
WALKING DISTANCE TO ALL LOCAL AMENITIES  
- REFURBISHED TO A HIGH STANDARD -  
SPACIOUS ACCOMMODATION - ENCLOSED  
REAR GARDEN - GARAGE & REAR VEHICULAR  
ACCESS -

Located just off the High Street in Cricklade this charming and attractive two double bedroom cottage offers spacious accommodation and simply **MUST BE VIEWED**. The accommodation briefly comprises: Entrance Hall, Lounge/Dining Room, Fitted Kitchen, Cloakroom, Landing Two Double Bedrooms and Refitted Bathroom. Outside there is an enclosed Rear Garden with Private Rear Access and Single Garage. Call Mcfarlane Sales & Lettings Cricklade 01793 751 044 **SOLE AGENTS**.





**AGENTS NOTE**

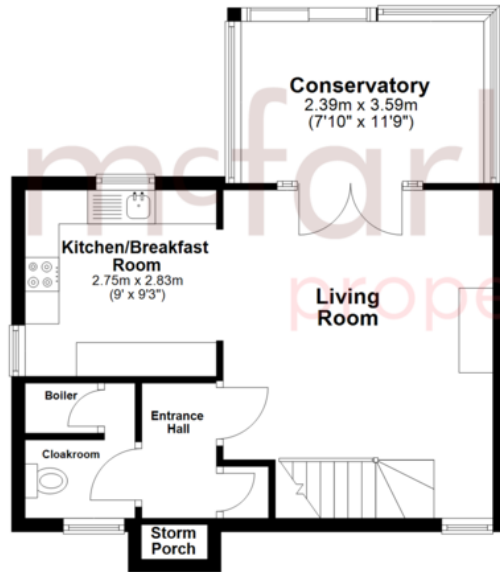
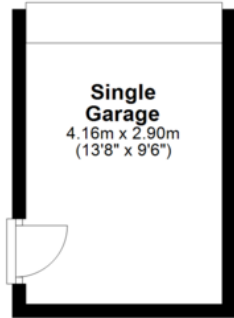
Under the terms of the estate agents 1979, we are obliged to inform you the seller of this property is an employee of McFarlane Sales & Lettings.

**mcfarlane**  
property.com

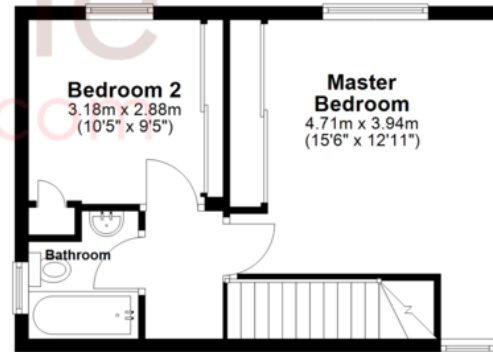


We   
where you  
**LIVE**

**Ground Floor**  
Approx. 55.1 sq. metres (593.6 sq. feet)



**First Floor**  
Approx. 32.6 sq. metres (351.0 sq. feet)




Total area: approx. 87.8 sq. metres (944.6 sq. feet)

Our team are friendly, experienced and are all local. They know it better than they do their own living rooms and can help you find what you're looking for because **we love where we live.**

We would be delighted to show you around this property.

**Because every home needs a personal touch.**

**If you would like to view this property then please get in touch.**

 01793 751044

 [cricklade@mcfarlaneproperty.com](mailto:cricklade@mcfarlaneproperty.com)

[mcfarlaneproperty.com](http://mcfarlaneproperty.com)

**mcfarlane**  
property.com

**Cricklade.**  
102 High Street  
Cricklade SN6 6AA  
 01793 751044

**Marlborough.**  
106 High Street  
Marlborough SN8 1LT  
 01672 514380

**Old Town.**  
28-30 Wood Street  
Swindon SN1 4AB  
 01793 296880

**Swindon.**  
The Village Centre,  
Redhouse SN25 2FW  
 01793 296600

Agents Note: Whilst every care has been taken to prepare these sales particulars, they are for guidance purposes only. All measurements are approximate are for general guidance purposes only and whilst every care has been taken to ensure their accuracy, they should not be relied upon and potential buyers are advised to recheck the measurements