



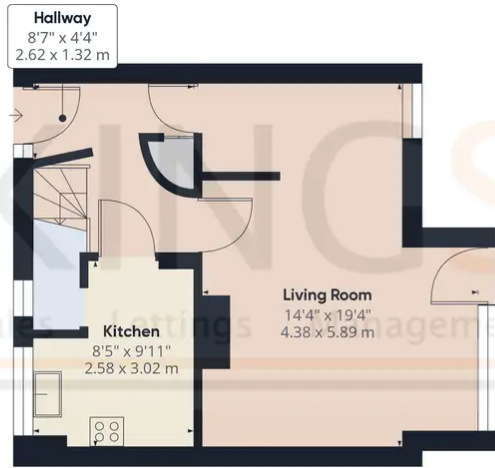
Rowan Walk, Hatfield

£1,600 pcm

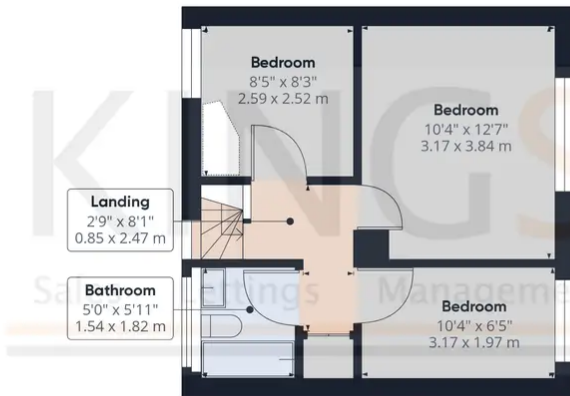
MID TERRACE HOUSE • THREE BEDROOMS • NEWLY FITTED KITCHEN • LARGE LIVING ROOM • NEW BATHROOM •
NEAR TO AMENITIES • CLOSE TO TRANSPORT LINKS • UNFURNISHED • AVAILABLE ASAP • EPC RATING - C

KINGS

Sales Lettings Management



Ground Floor



Floor 1

Approximate total area⁽¹⁾
731.81 ft²
67.99 m²

(1) Excluding balconies and terraces

While every attempt has been made to ensure accuracy, all measurements are approximate, not to scale. This floor plan is for illustrative purposes only.

GIRAFFE360

