



## The Old Antique shop, High Street, Attleborough

Guide Price £110,000

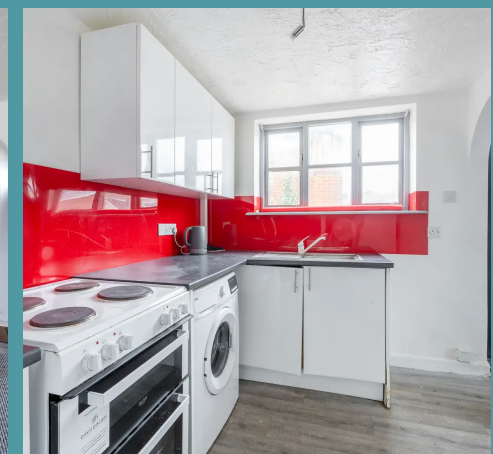
# The Old Antique shop, High Street

, Attleborough

GUIDE PRICE: £110,000 - £130,000. Nestled in the charming town of Attleborough, this one-bedroom property offers comfort and convenience with a generous kitchen equipped with bright cupboards and a cosy living room with ample space for furnishings. The upper level features a spacious bedroom with built-in storage options for clutter-free living, complemented by a well-sized bathroom featuring a relaxing bath with an overhead shower. Ideal for those seeking a peaceful space in a convenient location, this delightful property provides a perfect blend of functionality and comfort.

## THE LOCATION

High Street is situated in Attleborough a charming market town with charm and a welcoming atmosphere. The town features a bustling market square with shops, boutiques and cafes, as well as a vibrant weekly market offering local goods. Alongside Attleborough Train Station just a 3-minute walk away and supermarkets such as Sainsburys' adding to the convenience and charm of this town. Nearby Thetford Forest Park is ideal for nature lovers and the beautiful Norfolk countryside is perfect for exploring quaint villages and scenic views. With easy access to destinations like Norwich and the Norfolk Broads, Attleborough provides a gateway to experiences in a captivating setting.



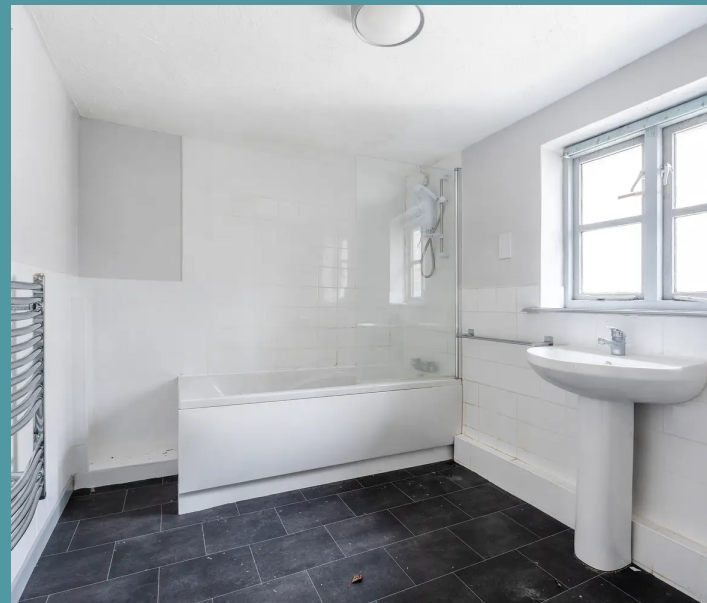
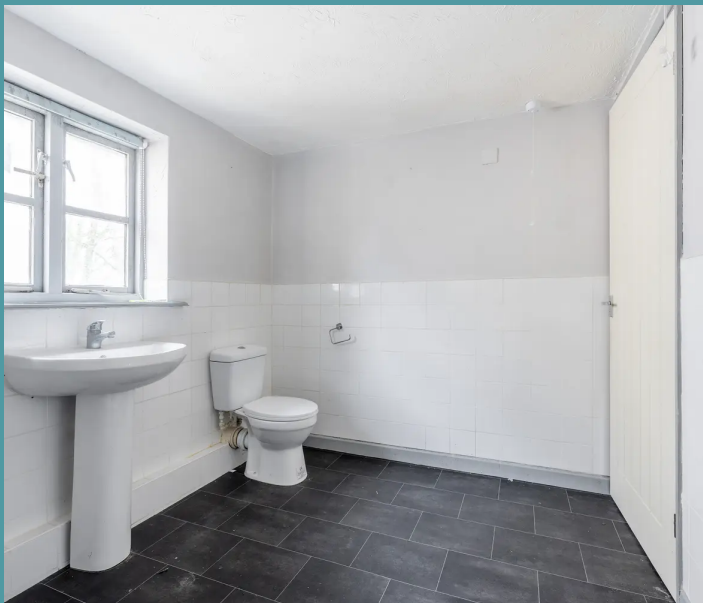


## The Old Antique shop, High Street

Attleborough

### THE PROPERTY

Situated in the charming town of Attleborough, this delightful one-bedroom property offers a perfect blend of comfort and convenience. Boasting a generous kitchen fitted with bright cupboards and provisions for appliances, this space is ideal for those who love to cook. The adjacent living room is adorned with carpeting and provides ample room for furniture, with easy access to the upper floor.



The upper level features a spacious bedroom with room for a large bed and built-in storage options, ensuring a clutter-free living experience. The property also benefits from a well-sized bathroom, featuring a three-piece suite inclusive of a relaxing bath with an overhead shower.



## The Old Antique shop, High Street

Attleborough

### AGENTS NOTE

We understand this property will be sold freehold connected to all mains services.

Gas Central Heating

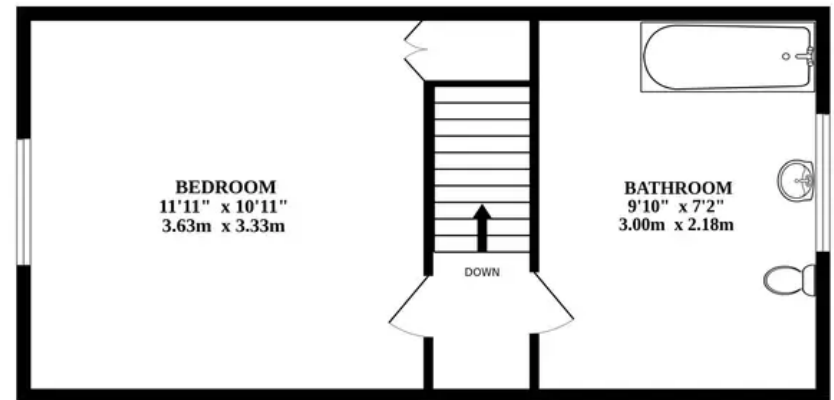
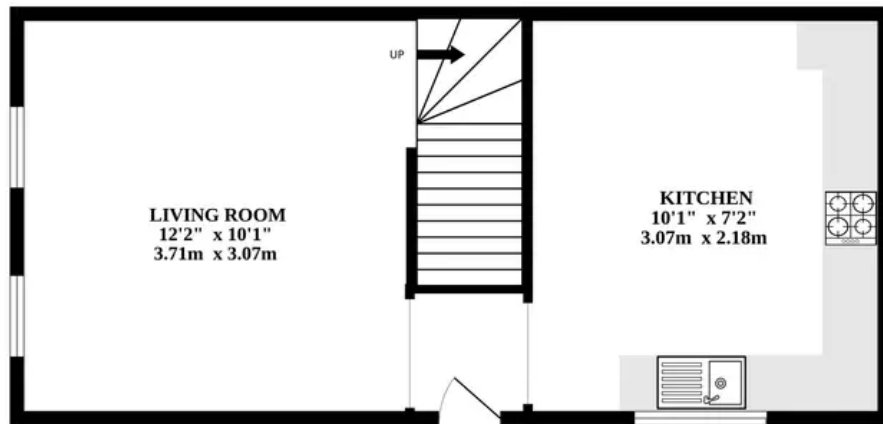
Council Tax Band - A

- ONE BEDROOM PROPERTY IN ATTLEBOROUGH
- GENEROUS KITCHEN WITH BRIGHT CUPBOARDS AND PROVISIONS FOR YOUR APPLIANCES
- LIVING ROOM WITH CARPETING, PLENTIFUL SPACE FOR FURNITURE AND ACCESS TO THE UPPER FLOOR
- ONE SPACIOUS BEDROOM WITH ROOM FOR A LARGE BED AND BUILT IN STORAGE
- GREAT SIZED BATHROOM WITH A THREE PIECE SUITE INCLUDING A BATH WITH OVERHEAD SHOWER
- WALKING DISTANCE TO VITAL AMENITIES
- TRAIN STATION ALSO AVAILABLE FOR THOSE NEEDING TO COMMUTE



GROUND FLOOR

1ST FLOOR



Whilst every attempt has been made to ensure the accuracy of the floorplan contained here, measurements of doors, windows, rooms and any other items are approximate and no responsibility is taken for any error, omission or mis-statement. This plan is for illustrative purposes only and should be used as such by any prospective purchaser. The services, systems and appliances shown have not been tested and no guarantee as to their operability or efficiency can be given.  
Made with Metropix ©2024

